



5 **IHE Quality, Research and Public Health
Technical Framework Supplement**

10 **Aggregate Data Exchange-HIV
(ADX-HIV)**

15 **Rev. 1.1 – Trial Implementation**

20 Date: March 19, 2019
Author: QRPH Technical Committee
Email: qrph@ihe.net

25 **Please verify you have the most recent version of this document. See [here](#) for Trial Implementation and Final Text versions and [here](#) for Public Comment versions.**

Foreword

30 This is a supplement to the IHE Quality, Research and Public Health (QRPH) Technical Framework. Each supplement undergoes a process of public comment and trial implementation before being incorporated into the volumes of the Technical Frameworks.

This supplement is published on March 19, 2019 for trial implementation and may be available for testing at subsequent IHE Connectathons. The supplement may be amended based on the results of testing. Following successful testing it will be incorporated into the QRPH Technical Framework. Comments are invited and may be submitted at
35 http://www.ihe.net/QRPH_Public_Comments.

“Boxed” instructions like the sample below indicate to the Volume Editor how to integrate the relevant section(s) into the relevant Technical Framework volume.

<i>Amend Section X.X by the following:</i>
--

40 Where the amendment adds text, make the added text **bold underline**. Where the amendment removes text, make the removed text **~~bold strikethrough~~**. When entire new sections are added, introduce with editor’s instructions to “add new text” or similar, which for readability are not bolded or underlined.

45 General information about IHE can be found at www.ihe.net.

Information about the IHE QRPH domain can be found at http://www.ihe.net/IHE_Domains.

Information about the organization of IHE Technical Frameworks and Supplements and the process used to create them can be found at http://www.ihe.net/IHE_Process and <http://www.ihe.net/Profiles>.

50 The current version of the IHE QRPH Technical Framework can be found at http://www.ihe.net/Technical_Frameworks.

55 **CONTENTS**

	Introduction to this Supplement.....	5
	Open Issues and Questions	6
	Closed Issues	7
	General Introduction	8
60	Appendix A – Actor Summary Definitions	8
	Appendix B – Transaction Summary Definitions.....	8
	Glossary	8
	Volume 1 – Profiles	9
	Copyright Licenses.....	9
65	Domain-specific additions	9
	X Aggregate Data Exchange-HIV Profile (ADX-HIV).....	10
	X.1 ADX-HIV Actors, Transactions, and Content Modules	10
	X.1.1 Actor Descriptions and Actor Profile Requirements.....	11
	X.1.1.1 Content Creator.....	11
70	X.1.1.2 Content Consumer	11
	X.2 Actor Options	11
	X.3 ADX-HIV Required Actor Groupings	11
	X.4 ADX-HIV Overview	12
	X.4.1 Concepts	13
75	X.4.2 Use Cases	14
	X.4.2.1 Use Case #1: Routine reporting of HIV indicator data from EMR.....	14
	X.4.2.1.1 Routine reporting from EMR: Use Case Description.....	14
	X.4.2.2 Use Case #2: Reporting data from HMIS to Other Aggregate Data Repositories	15
80	X.4.2.2.1 Reporting national data from HMIS: Use Case Description	15
	X.5 ADX-HIV Security Considerations	17
	X.6 ADX-HIV Cross Profile Considerations.....	17
	Appendices.....	18
	Volume 2 – Transactions	19
85	Appendices.....	20
	Volume 2 Namespace Additions	20
	Volume 3 – Content Modules.....	21
	5 Namespaces and Vocabularies.....	21
	6 Content Modules.....	21
90	7 Content Modules.....	21
	8 ADX Content Modules	22
	8.5 ADX-HIV Content Modules.....	22
	8.5.1 ADX-HIV Referenced Indicator guidelines.....	22
	8.5.2 ADX-HIV Referenced Standards.....	22
95	8.5.3 ADX-HIV Content	23
	8.5.3.1 Number of individuals who received HIV Testing Services (HTS) and received their test results.....	25

	8.5.3.2 Proportion of pregnant women with known HIV status at antenatal care.....	26
	8.5.3.3 Number of adults and children newly enrolled on antiretroviral therapy (ART).....	27
100	8.5.3.4 Proportion of people living with HIV who are receiving antiretroviral therapy (ART)	29
	8.5.3.5 Proportion of HIV-positive pregnant women who received antiretroviral treatment to reduce risk of mother-to-child-transmission (MTCT) during pregnancy.	30
105	8.5.3.6 Proportion of adults and children known to be alive and on treatment 12 months after initiation of antiretroviral therapy	31
	8.5.3.7 Proportion of people living with HIV and on ART who are virologically suppressed.....	32
	Appendices to Section 8.....	35
110	Appendix 8A – (Normative) ADX-HIV DSD	36
	Appendix 8B – (Informative) Generated ADX-HIV data schema	50
	Appendix 8C – (Informative) Generated ADX-HIV schema for validating disaggregation.....	54
	Appendix 8D – (Informative) ADX-HIV Sample data.....	59
	Appendix 8E – (Informative) Representation of age groups in ADX	65
115	Appendix 8F – (Informative) Mapping Sex codes between HL7 value set and ISO/IEC 5218... ..	66
	Appendix 8G – (Informative) Challenges associated with aligning disaggregations.....	67
	Volume 3 Namespace Additions	68
	Volume 4 – National Extensions	69
	3 National Extensions	70
120	3.1 Aggregate Data Exchange-HIV - PEPFAR Extension	70
	3.1.1 Comment Submission	70
	3.1.2 ADX-HIV.....	70
	3.1.3 ADX-HIV PEPFAR Content Modules	70
125	3.1.3.1 Number of individuals who received HIV Testing Services (HTS) and received their test results.....	70
	3.1.3.2 Proportion of pregnant women with known HIV status at antenatal care.....	74
	3.1.3.3 Number of adults and children newly enrolled on antiretroviral therapy (ART).....	76
	3.1.3.4 Proportion of people living with HIV who are receiving antiretroviral therapy (ART)	77
130	3.1.3.5 Proportion of HIV-positive pregnant women who received antiretroviral treatment to reduce risk of mother-to-child-transmission (MTCT) during pregnancy.	79
	3.1.3.6 Proportion of people living with HIV and on ART who are virologically suppressed.....	80
135		

Introduction to this Supplement

140 The Aggregate Data Exchange-HIV (ADX-HIV) Content Profile supports interoperable reporting of HIV aggregate data. Typically, this entails submission of routine HIV reports from a health facility to an administrative jurisdiction such as a health district and eventually to the national level as well as international reporting on the HIV response.

145 The motivating context for this content profile originates in the ongoing efforts to address the HIV epidemic in limited resource environments though its potential use is not restricted to these environments. The health information system that enjoys national coverage in such diverse settings is often the routine reporting system. This is the national health management information system (HMIS) which gathers aggregate data from all health facilities so that HIV and other health indicators can be generated, compared and analyzed to produce information to facilitate decision making on relevant course of action and interventions.

150 The ADX-HIV Profile provides a way to define a Data Structure Definition (DSD) and the normative schema of the aggregate data XML message to be exchanged between systems for a particular aggregate data report. The ADX-HIV Profile addresses the problems associated with not having a common data structure across existing systems for HIV-related aggregate data reporting. Solving this problem provides a baseline that organizations can share, ensuring that aggregate data reported from the same source to different jurisdictions is comparable.

155 This ADX-HIV Profile defines a common DSD for HIV core indicators with data elements and associated disaggregations along with instructions regarding how to leverage these to generate and exchange conformant XML messages. Interoperable message exchange will be valuable to jurisdictions such as Ministries of Health, and WHO, and to health initiatives such as the U.S. President’s Emergency Plan for AIDS Relief (PEPFAR), the Global Fund, UNAIDS, and others (see Figure 1). A jurisdiction can extend the ADX-HIV DSD and validation schemas to meet
160 additional HIV reporting requirements specific to their context.

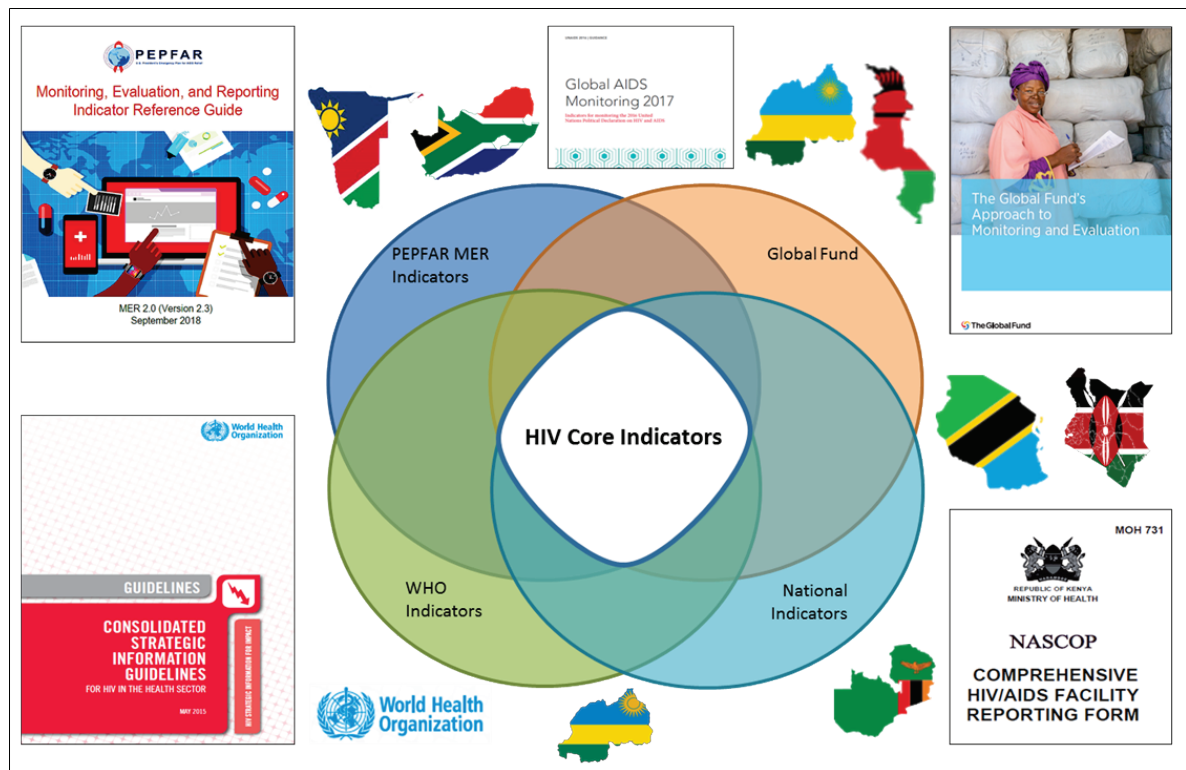


Figure 1: A Venn diagram of core HIV care and treatment indicators from different jurisdictions

Approach

165 This profile leverages ADX specification to normatively describe HIV core indicators with data
elements and associated disaggregations that can be leveraged to generate and exchange
conformant XML messages. These HIV core indicators are drawn from indicator sets published
and used by several jurisdictions including Ministries of Health, and WHO, and health initiatives
such as the U.S. President’s Emergency Plan for AIDS Relief (PEPFAR), the Global Fund,
170 UNAIDS, and others.

The data elements and associated disaggregations for the HIV core indicators are then used to
generate a set of artifacts including a common Data Structure Definition (DSD) for HIV, two
schemas, a W3C schema and a schematron for validating XML messages exchanged between
Content Creators and Content Consumers in different jurisdictions and a sample XML data
175 message is also provided.

Open Issues and Questions

1. This profile leverages ISO-8601 to codify age groups, HL7 administrative sex to codify
sex (M or F... but not Unknown), and SNOMED-CT to codify HIV test result status. Are
there alternate code systems and value sets in broad use for HIV indicator reporting?
180 Should any of these be considered as the default?

- 185
2. Particularly regarding the use of SNOMED-CT to indicate HIV test status – there is no code to distinguish whether the status (e.g., HIV positive) is a previously-known status or whether it is known as the result of a newly-done HIV test. The convention proposed in this profile is to append an asterisk (*) to the SNOMED-CT code to denote that a newly-tested result is being reported. Is there an existing code system and value set that could be leveraged? If not – how will support be gathered for a new SNOMED-CT code request to be made and under whose auspices should this request be submitted (e.g., WHO)?
- 190
3. There are situations where there is a misalignment in the age group disaggregations between (for example) a national MOH and WHO. If the age group disaggregation specified in this profile is more precise than that of the MOH... what should be the approach to develop ADX-HIV conformant messages? Or what should be the approach for developing a national extension of ADX-HIV?
- 195
4. Additional PEPFAR indicators and data element codes will be included in Volume 4.
- 200
5. The SNOMED-CT code favored for indicating “on ART” is from the NIH site: bioportal.org. The code (432101000124108) is not actually found using IHTSDO’s SNOMED-CT browser (which is surprising). As with HIV test and on ART coding; our convention is to append an asterisk (*) and double-asterisk (**) to indicate a recent and past event respectively. For example the SNOMED-CT code for “newly on ART” and “Newly tested positive” will have an asterisk (*) appended and SNOMED-CT code for “Known HIV positive” will have a double-asterisk (**) appended. Is this the right way to do it? Are there other coding schemes in use that should instead be adopted?
- 205
6. The numerator data elements for ART5 and VLS3 are disaggregated by “pregnant” and “breastfeeding”. It is not clear whether these are modifiers (e.g., further disaggregations) to the age+sex disaggregations or whether these are to be separately reported as their own independent disaggregations.
- 210
7. Currently there is no way to express or represent unknown age group using ISO8601. ISO 8601 is being updated to include additional date time representations that may help with addressing the issue of representing unknown age <https://www.iso.org/standard/70908.html>.

210 Closed Issues

- There is no standard or coding systems for the age groups.
RESOLUTION: Adopted the ISO8601 to create codes for age groups.
 - The age groups from the existing indicators published by different jurisdictions or organizations are not harmonized.
RESOLUTION: Map the age groups across the jurisdictions. For ADX-HIV Profile the age group selected shall be fine enough to allow computation of the age groups from the other jurisdictions.
- 215

General Introduction

220 *Update the following appendices to the General Introduction as indicated below. Note that these are not appendices to Volume 1.*

Appendix A – Actor Summary Definitions

Add the following actors to the IHE Technical Frameworks General Introduction list of actors:

Actor	Definition
Content Data Structure Creator	The Content Data Structure Creator creates a message structure definition that may be employed by a Content Creator to develop profile-conformant messages for exchange with a Content Consumer.
Content Data Structure Consumer	The Content Data Structure Consumer consumes a message structure definition that may be employed by a Content Creator to develop profile-conformant messages for exchange with a Content Consumer.

Appendix B – Transaction Summary Definitions

225 *Add the following transactions to the IHE Technical Frameworks General Introduction list of Transactions:*

Transaction	No.	Definition
ADX POST Content	QRPH-53	The POST Content transaction is used by the Content Creator to perform an HTTP POST request on the Content Consumer.

Glossary

230 *Add the following glossary terms to the IHE Technical Frameworks General Introduction Glossary:*

No new glossary terms.

Volume 1 – Profiles

Copyright Licenses

235 NA

Add the following to the IHE Technical Frameworks General Introduction Copyright section:

Domain-specific additions

240 NA

Add new Section X

X Aggregate Data Exchange-HIV Profile (ADX-HIV)

245 The Aggregate Data Exchange-HIV Profile (ADX-HIV) specifies how to create and consume
ADX messages for core HIV care and treatment indicators. ADX-HIV leverages the actors and
transactions defined in the ADX Profile to enable interoperable reporting of routine HIV
indicator data.

250 ADX-HIV is a Content Profile that defines a common Data Structure Definition (DSD) with
structural metadata (codelists with data elements and associated disaggregation) to represent HIV
core indicators that could be readily used in existing systems for reporting. Additionally, it
specifies how to create and extend HIV care and treatment normative schema and XML
messages. These are used for producing, validating and processing aggregate data by diverse
Content Creators and Content Consumers of these core HIV indicators.

255 Presently, multiple information systems are used to monitor progress towards achieving
epidemic control and the 90-90-90 global goals. These goals, to be accomplished by 2020, are:
for 90% of people with HIV to be diagnosed and know their status; for 90% of people living with
HIV (PLHIV) to be on Antiretroviral Therapy (ART); and for 90% of people on ART to be
virally suppressed.

260 In practice, the data elements and disaggregations used for reporting HIV care and treatment
indicators are dependent on the organization or jurisdiction publishing them. ADX-HIV will help
govern and enforce interoperability between HIV point of care (source) systems and HMIS
(receiver) systems. This will reduce the burden within jurisdictions for developing HIV core
indicators schema. It will also foster harmonization of HIV core indicators across jurisdictions
and increase the ability to compare results between health facilities, subnational levels and even
265 countries.

X.1 ADX-HIV Actors, Transactions, and Content Modules

This section defines the actors, transactions, and/or content modules in this profile. General
definitions of actors are given in the Technical Frameworks General Introduction Appendix A at
http://ihe.net/Technical_Frameworks.

270 Figure X.1-1 shows the actors directly involved in the ADX-HIV Profile and the direction that
the content is transmitted.

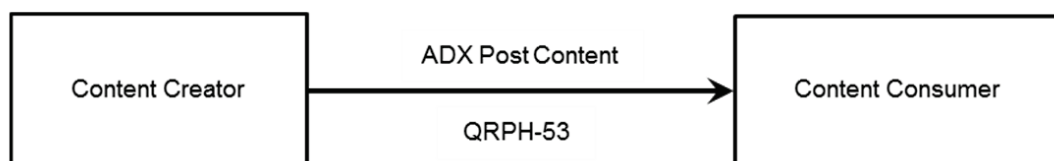


Figure X.1-1: ADX-HIV Actor Diagram

275

Table X.1-1 lists the content module(s) defined in the ADX-HIV Profile. To claim support for this profile, an actor SHALL support all required content modules (labeled “R”) and may support optional content modules (labeled “O”).

Table X.1-1: ADX-HIV Profile - Actors and Content Modules

Actors	Content Modules	Optionality	Reference
Content Creator	ADX-HIV Content	R	QRPH TF-3: Appendix 8D
Content Consumer	ADX-HIV Content	R	QRPH TF-3: Appendix 8D

280

X.1.1 Actor Descriptions and Actor Profile Requirements

X.1.1.1 Content Creator

The Content Creator SHALL conform to all requirements defined for this actor in ADX and SHALL be able to generate an XML file that is conformant to the ADX-HIV Content Module and transmit it to the Content Consumer using [QRPH-53].

285

X.1.1.2 Content Consumer

A Content Consumer SHALL conform to all requirements defined for this actor in ADX and SHALL be able to receive and process an inbound XML document that is conformant to the ADX-HIV Content Module and conveyed using [QRPH-53]. What it means to process the XML document depends on the nature of the processor and is out of scope of this profile. For example, it might persist the individual data tuples, or it might format them for display or perform further aggregation on the data.

290

X.2 Actor Options

Table X.2-1: ADX - Actors and Options

Actor	Option Name	Reference
Content Creator	No options defined	
Content Consumer	No options defined	--

295

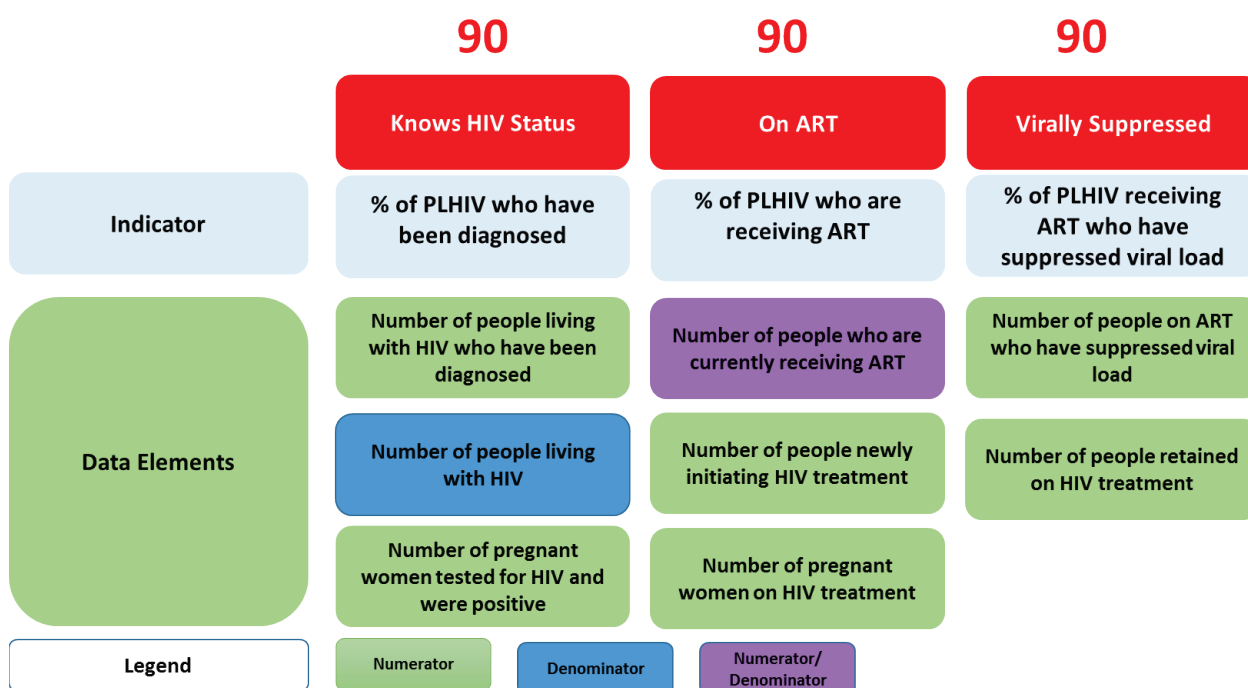
X.3 ADX-HIV Required Actor Groupings

There are no Required Actor Groupings defined.

X.4 ADX-HIV Overview

300 The Aggregate Data Exchange-HIV Profile (ADX-HIV) specifies how to create and consume ADX messages for core HIV care and treatment indicators. ADX-HIV leverages the actors and transactions defined in the ADX Profile to enable interoperable reporting of routine HIV indicator data.

305 ADX-HIV is a Content Profile that defines a common Data Structure Definition (DSD) with structural metadata (codelists with data elements and associated disaggregation) to represent HIV core indicators that could be readily used in existing systems for reporting. Additionally, it specifies how to create and extend HIV care and treatment normative schema and XML messages. These are used for producing, validating and processing aggregate data by diverse Content Creators and Content Consumers of these core HIV indicators.



310 **Figure X.4-1: Core HIV indicators for monitoring and evaluation of the 90-90-90 goals**

315 Presently, multiple information systems are used to monitor progress towards achieving epidemic control and the 90-90-90 global goals. These goals, to be accomplished by 2020, are: for 90% of people with HIV to be diagnosed and know their status; for 90% of people living with HIV (PLHIV) to be on Antiretroviral Therapy (ART); and for 90% of people on ART to be virally suppressed.

In practice, the data elements and disaggregations used for reporting HIV care and treatment indicators are dependent on the organization or jurisdiction publishing them. ADX-HIV will help govern and enforce interoperability between HIV point of care (source) systems and HMIS

320 (receiver) systems. This will reduce the burden within jurisdictions for developing HIV core indicators schema. It will also foster harmonization of HIV core indicators across jurisdictions and increase the ability to compare results between health facilities, subnational levels and even countries.

325 ADX-HIV is based on the QRPB Aggregate Data Exchange Profile (ADX). It defines an ADX-conformant DSD consisting of data elements for the core indicators used for monitoring HIV 90-90-90 goals with associated disaggregation that can be readily used by different jurisdictions. An XML schema definition (XSD) generated from the DSD is also provided for validating the messages exchanged. Additional data elements and their disaggregations may be defined as necessary within the context of use - for example, within a particular country or implementing jurisdiction to meet the established reporting requirements. As indicated by Figure X.4-2, this profile defines the scope that supports ADX-HIV message exchange.

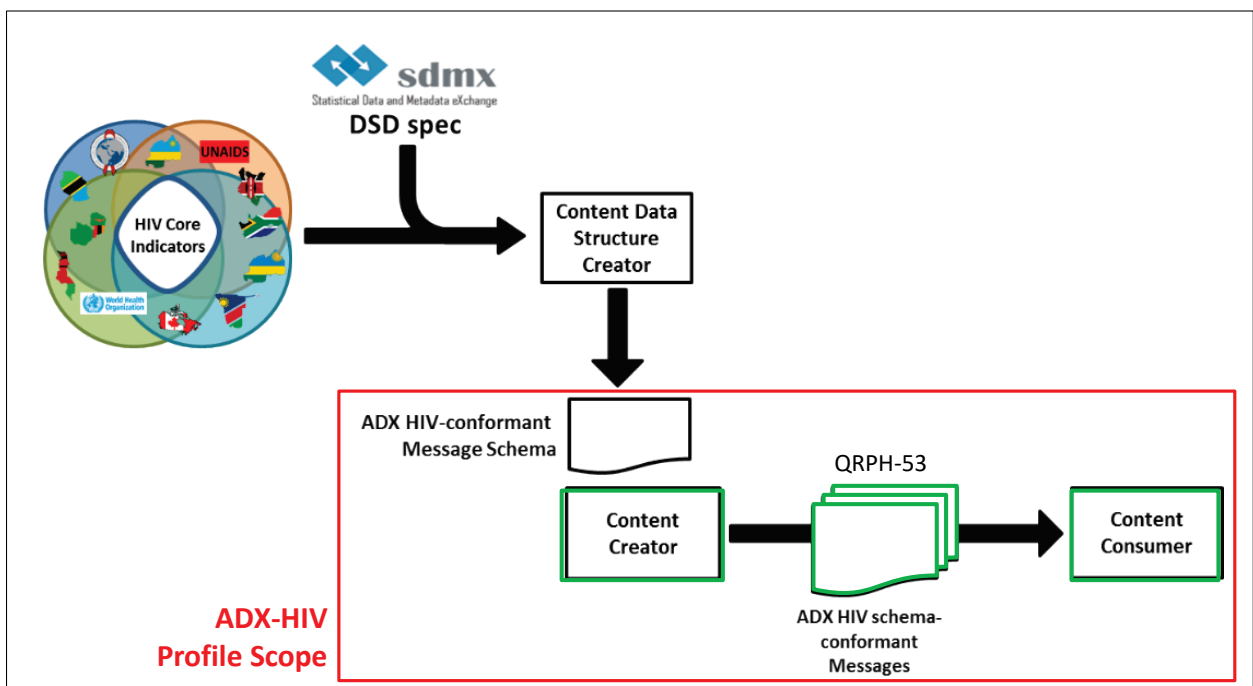


Figure X.4-2: An illustration of ADX-HIV Profile inputs and outputs

335 X.4.1 Concepts

The following defined concepts are used in this profile:

340 **Age Group:** an age group is defined as a grouping of individual records aggregated based on the subject's age at the time of reporting. For this profile, age group is expressed as a period range using ISO-8601 with the convention that persons in the age group are at least as old as the first number in the range and of an age less than the last number in the range. As an example, persons in the age group P5Y--10Y range in age from 5 years 0 days old to 10 years 0 days old.

Data Structure Definition (DSD): a formal SDMX v2.1 definition of the structural metadata of an ADX message.

345 **Data value:** a reported value with its associated keys. For routine HIV, data value associated key would represent a data element subject, a temporal dimension and a spatial dimension. For example, number of people started on ARV in February 2018 in Kenya.

Data Value Set: a collection of data values with associated keys conforming to the ADX DSD.

350 **Data element:** the atomic subject of data collection such as “number of individuals tested for HIV”, “number of people started on HIV treatment”, “number of pregnant women on ARV”. This concept is required for the construction of HIV indicators but is not in itself an indicator.

Organization Unit: the spatial dimension of the data value tuple. It can identify a single health facility or a geographic/administrative area such as district, province or country. Within a national reporting structure, an organization unit represents a single node in a reporting hierarchy.

355 **Time:** the temporal dimension of the data value tuple. For routine data this would represent a time period such as the month of January 2015, the ISO8601 week number 3 of 2015, or the year 2015.

Value: the recorded value, which is keyed in the data value tuple.

X.4.2 Use Cases

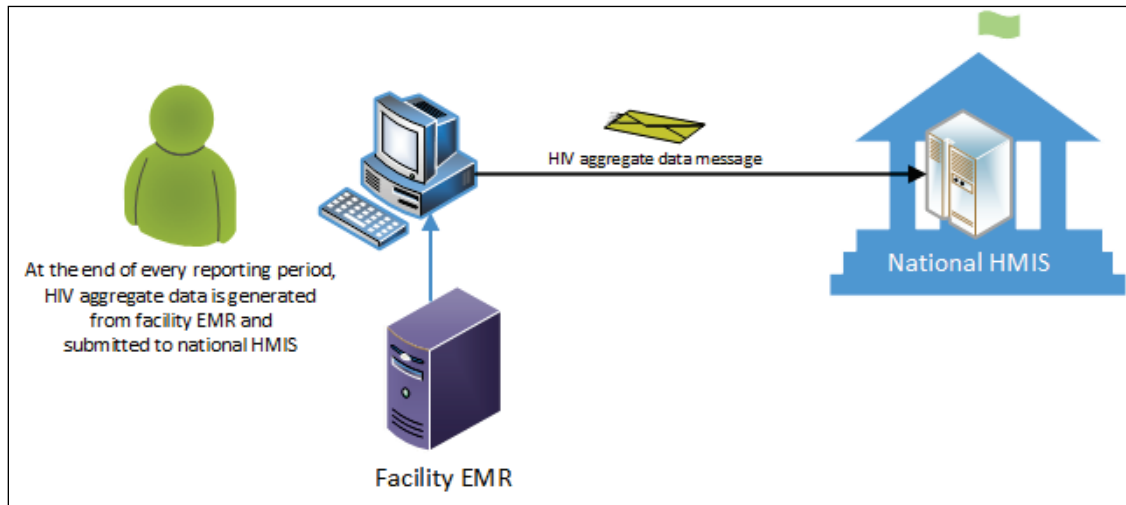
360 **X.4.2.1 Use Case #1: Routine reporting of HIV indicator data from EMR**

This use case describes reporting of aggregate data from patient level information systems such as EMRs to an aggregate data system such as a national Health Management Information System (HMIS).

X.4.2.1.1 Routine reporting from EMR: Use Case Description

365 To deal with the challenge of continuity of care, most HIV treatment centers at health facilities have acquired an EMR system to manage patients. In most cases, patient data is captured on paper encounters or registers during visits and later entered into the EMRs. Typically, HIV indicator data is aggregated every month at the health facilities providing HIV care and treatment services and submitted into the national aggregate information system. The reports demanded of
370 the facility are complex, so there are considerable benefits in terms of reducing reporting burden as well as increasing accuracy to extracting reports from the EMR.

375 Using the ADX-HIV Profile will provide HIV indicator structural metadata that can be readily used to generate ADX-conformant messages from EMRs at health facilities. The ADX-conformant message is sent by the facility EMR (acting as a Content Creator) to the aggregate data system (acting as a Content Consumer) at the national level as illustrated by Figure X.4.2.1.1-1. Such a message exchange improves the timeliness and efficiency of the HMIS data reporting workflow.



380 **Figure X.4.2.1.1-1: Routine reporting of HIV aggregate data from Facility to National system**

This use case could also be used for reporting indicator data from a national patient level data repository to a national HMIS.

385 **X.4.2.2 Use Case #2: Reporting data from HMIS to Other Aggregate Data Repositories**

This use case describes how the ADX-HIV Profile enables the reporting of aggregate data from an aggregate data system to another aggregate data systems, e.g., global reporting of HIV indicators from a national HMIS and to a global aggregate data repository.

X.4.2.2.1 Reporting national data from HMIS: Use Case Description

390 To facilitate routine reporting of HIV indicator data from countries, country offices may generate aggregate data from national HMIS for submission to regional or global organizations. In this case, the national HMIS is the Content Creator that generates HIV core indicator data to be consumed by global aggregate data repositories or observatories, such as UNAIDS Global AIDS Response Progress Reporting (GARPR) online tool and PEPFAR information system, Data for
395 Accountability, Transparency and Impact (DATIM), for monitoring health goals. This could also include reporting from a sub-national M&E system to the national HMIS.

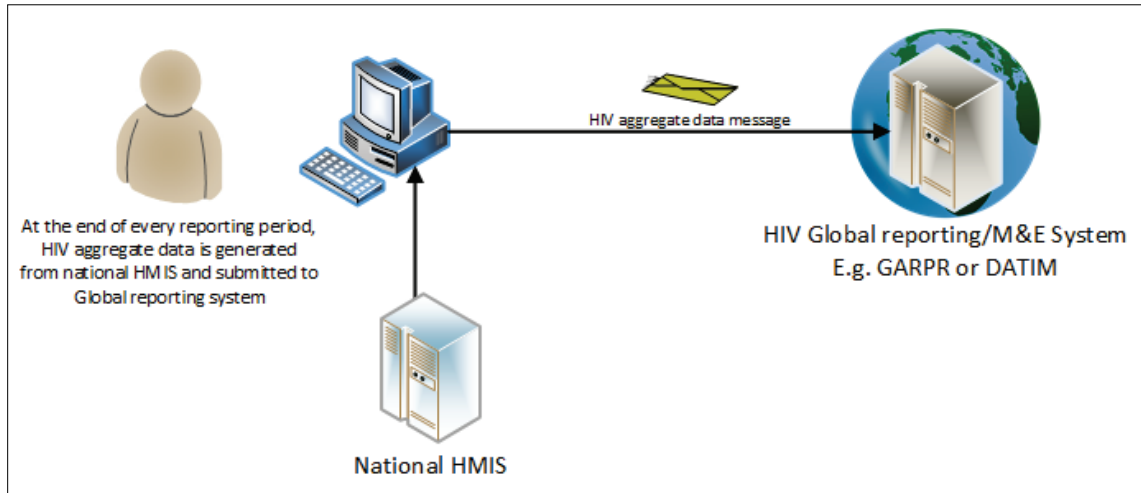


Figure X.4.2.2.1-1: Global reporting to M&E Systems (e.g., DATIM)

400 The reporting of aggregate data from one HMIS to another HMIS can follow one of two patterns. In the simplest case, the two HMIS systems are operating based on the same ADX Content Module. In a more complicated case, the schema used by the Content Creator may differ from the schema of the Content Consumer. In this more complicated case, some form of façade program may transform the inbound XML message; “mapping” it from the source content

405 schema to the destination content schema (e.g., via an XSLT). As a corollary use case, two different extended versions of the core ADX-HIV content schema (the source, and the destination schema, respectively) may be leveraged to develop and operationalize such transformation maps.

PEPFAR MER 2.0		WHO/UNAIDS		The Global Fund		Kenya		Rwanda			
Age Group	ISO 8601 Age group code	Age Group	ISO 8601 Age group code	Age Group	ISO 8601 Age group code	Age Group	ISO 8601 Age group code	Age Group	ISO 8601 Age group code		
<1 Yr	P0Y--P1Y	<1 Yr	P0Y--P1Y	0-14 Yrs	P0Y--P15Y	<1 Yr	P0Y--P1Y	<1 Yr	P0Y--P1Y		
1-4 Yrs	P1Y--P5Y	1-4 Yrs	P1Y--P5Y			1-9 Yrs	P1Y--P10Y	1-4 Yrs	P1Y--P5Y		
5-9 Yrs	P5Y--P10Y	5-9 Yrs	P5Y--P10Y			10-14 Yrs	P10Y--P15Y	5-9 Yrs	P5Y--P10Y		
10-14 Yrs	P10Y--P15Y	10-14 Yrs	P10Y--P15Y			15-19 Yrs	P15Y--P20Y	10-14 Yrs	P10Y--P15Y		
15-19 Yrs	P15Y--P20Y	15-19 Yrs	P15Y--P20Y	15-19 Yrs	P15Y--P20Y	15-19 Yrs	P15Y--P20Y	15-19 Yrs	P15Y--P20Y		
20-24 Yrs	P20Y--P25Y	20+ Yrs	P20Y--P9999Y	20-24 Yrs	P20Y--P25Y	20-24 Yrs	P20Y--P25Y	20-24 Yrs	P20Y--P25Y		
25-29 Yrs	P25Y--P30Y			25+ Yrs	P25Y--P9999Y					25-49 Yrs	P25Y--P50Y
30-34 Yrs	P30Y--P35Y										
35-39 Yrs	P35Y--P40Y										
40-44 Yrs	P40Y--P45Y										
45-49 Yrs	P45Y--P50Y										
50+ Yrs	P50Y--P9999Y										

Figure X.4.2.2.1-2: Example Age Disaggregations

Figure X.4.2.2.1-2 illustrates, for example, how age disaggregations might differ between HIV systems. Mapping from one to another of these disaggregations will require a transform map that “lumps” or “splits” the values in the XML message accordingly.

X.5 ADX-HIV Security Considerations

- 415 The ADX Profile does not support the exchange of person-centric health information. Therefore, this profile does not specify security mechanisms, such as the ITI Audit Trail and Node Authentication (ATNA) Profile, that would be required were that the case. Implementers should nevertheless be sensitive to the possibility of approximate personal identification arising from aggregate data derived from small population sets. Transport of such data should be safeguarded
- 420 according to jurisdictional guidelines.

X.6 ADX-HIV Cross Profile Considerations

There are no Cross Profile considerations.

Appendices

None

425

Volume 2 – Transactions

There are no new transactions identified by this profile.

Appendices

Volume 2 Namespace Additions

430 There are no new Volume 2 Namespace additions

Volume 3 – Content Modules

5 Namespaces and Vocabularies

- 435 The following are namespaces referred to in ADX_HIV Profile together with the prefix which is used to refer to that namespace within this document.

Namespace	Prefix	Description
http://www.sdmx.org/resources/sdmxml/schemas/v2_1/message	Mes	SDMX 2.1 message
http://www.sdmx.org/resources/sdmxml/schemas/v2_1/structure	Str	SDMX 2.1 structure definitions
http://www.sdmx.org/resources/sdmxml/schemas/v2_1/common	Com	SDMX 2.1 common elements
http://www.w3.org/2001/XMLSchema	Xs	W3C Schema
urn:ihe:qrph:adx:2015		ADX data payload

6 Content Modules

HL7^{®1} CDA^{®2} Content Modules - Not applicable

440 **7 Content Modules**

DICOM^{®3} Content Modules -Not applicable

¹ HL7 is the registered trademark of Health Level Seven International.

² CDA is the registered trademark of Health Level Seven International.

³ DICOM is the registered trademark of the National Electrical Manufacturers Association for its standards publications relating to digital communications of medical information.

8 ADX Content Modules

This section defines Content Modules for the Aggregate Data Exchange (ADX) Profile.

445 8.5 ADX-HIV Content Modules

ADX-HIV content Profile describe the content of the core HIV indicators for monitoring 90-90-90 goal used by global organizations and ministries (see Section X.4). ADX_HIV DSD and the associated normative schemas for validating the data message are also defined.

8.5.1 ADX-HIV Referenced Indicator guidelines

450 **Table 8.5.1-1: ADX-HIV Referenced Indicator guidelines**

Organization	Title	Source
WHO/UNAIDS	Consolidated strategic Information Guidelines for HIV in Health Sector	http://apps.who.int/iris/bitstream/10665/164716/1/9789241508759_eng.pdf
The U.S. PEPFAR	Monitoring, Evaluation, and Reporting (MER 2.0) Indicator Reference Guide	https://datim.zendesk.com/hc/en-us/article_attachments/360012244672/MER_Indicator_Reference_Guide_Version_2.3_FY19_.pdf
Global Fund	Global Fund Indicator Guidance Sheets: HIV	https://www.theglobalfund.org/media/5189/me_indicatorguidancesheets-annexa-hiv_sheet_en.xlsx?u=63648680678000000
Ministry of Health - Kenya	NASCOP Comprehensive HIV/AIDS Facility Reporting Form	ftp://ftp.ihe.net/TF_Implementation_Material/QRPH/ADX-HIV/MOH_731_Kenya_final.pdf
Ministry of Health - Rwanda	ART Service monthly Reports	ftp://ftp.ihe.net/TF_Implementation_Material/QRPH/ADX-HIV/ART_New_Reporting_form_2017_Rwanda.docx

8.5.2 ADX-HIV Referenced Standards

455 This profile specifies default code sets for the AGE GROUP, SEX and CLINICAL INDICATOR concepts needed to develop data element disaggregations. The profile leverages ISO, HL7 and SNOMED-CT standards for these concepts, respectively, and does not necessarily employ all of the available values within a given value set; value set subsets are so indicated in the profile. All standards referenced in this document are listed below with their common abbreviation, full title, and link to the standard. Implementing jurisdictions may adopt alternate standards. Jurisdictional alternates are documented in Volume 4 of this profile.

Table 8.5.2-1: ADX-HIV Referenced Standards

Abbreviation	Title	URL
HL7 Value sets	Administrative Sex	http://hl7.org/fhir/v2/0001/index.html
ISO 8601	Data elements and interchange formats -- Information interchange -- Representation of dates and times	https://www.iso.org/standard/40874.html https://en.wikipedia.org/wiki/ISO_8601

Abbreviation	Title	URL
ADX Profile	Aggregate Data Exchange (ADX) Profile	http://wiki.ihe.net/index.php/Aggregate_Data_Exchange
SNOMED-CT	HIV test result / HIV status Newly tested for HIV (append *)	http://purl.bioontology.org/ontology/SNOMEDCT/165815009 http://purl.bioontology.org/ontology/SNOMEDCT/165816005
SNOMED-CT	On ART Newly on ART (append *)	http://purl.bioontology.org/ontology/SNOMEDCT/432101000124108
SNOMED-CT	Pregnant (status)	https://phinvads.cdc.gov/vads/ViewCodeSystemConcept.action?oid=2.16.840.1.113883.6.96&code=146789000
SNOMED-CT	Breastfeeding (status)	http://purl.bioontology.org/ontology/SNOMEDCT/169750002

460

8.5.3 ADX-HIV Content

The tables in this section describe the HIV core indicator data elements (numerators and denominators) and their associated disaggregations. Together, these data elements constitute the ADX-HIV content schema. As illustrated by the example ADX-HIV messages included in Appendix 8D, the convention is not to transmit the indicators but rather the Content Creator SHOULD convey to the Content Consumer the data elements (numerator and denominator) from which the referenced indicators may be calculated.

465

The core ADX-HIV data elements, and their respective indicators, are listed in Table 8.5.3-1.

Table 8.5.3-1: Core ADX-HIV Data Elements and Indicators

Section	Numerator	Denominator	Indicator
8.5.3.1	QRPH_ADX_HTS2_N	NA	Number of individuals who received HIV Testing Services (HTS) and received their test results
8.5.3.2	QRPH_ADX_MTCT1_N	QRPH_ADX_MTCT1_D	Proportion of pregnant women with known HIV status at antenatal care
8.5.3.3	QRPH_ADX_ART1_N	NA	Number of adults and children newly enrolled on antiretroviral therapy (ART)
8.5.3.4	QRPH_ADX_ART3_N	QRPH_ADX_ART3_D	Proportion of people living with HIV who are receiving antiretroviral therapy (ART)
8.5.3.5	QRPH_ADX_MTCT2_N	QRPH_ADX_MTCT2_D	Proportion of HIV-positive pregnant women who received antiretroviral treatment to reduce risk of mother-to-child-transmission (MTCT) during pregnancy.
8.5.3.6	QRPH_ADX_ART5_N	QRPH_ADX_ART5_D	Proportion of adults and children known to be alive and on treatment 12 months after initiation of antiretroviral therapy
8.5.3.7	QRPH_ADX_VLS3_N	QRPH_ADX_VLS3_D	Proportion of people living with HIV and on ART who are virologically suppressed

470

The disaggregations and their respective codes for core ADX-HIV data elements, are listed in Table 8.5.3-2.

Table 8.5.3-2: Disaggregations for core ADX-HIV Data Elements

Disaggregation	Disaggregation Name	Disaggregation code	Data elements
Age group	<1 year	P0Y--P1Y	QRPH_ADX_HTS2_N
	1-4 Years	P1Y--P5Y	QRPH_ADX_ART1_N
	5-9 Years	P5Y--P10Y	QRPH_ADX_ART3_N
	10-14 Years	P10Y--P15Y	QRPH_ADX_ART5_N
	15-19 Years	P15Y--P20Y	QRPH_ADX_VLS3_N
	20-24 Years	P20Y--P25Y	QRPH_ADX_VLS3_D
	25-29 Years	P25Y--P30Y	
	30-34 Years	P30Y--P35Y	
	35-39 Years	P35Y--P40Y	
	40-44 Years	P40Y--P45Y	
	45-49 Years	P45Y--P50Y	
50+ Years	P50Y--P9999Y		
Sex	Male	M	QRPH_ADX_HTS2_N QRPH_ADX_ART1_N QRPH_ADX_ART3_N
	Female	F	QRPH_ADX_ART5_N QRPH_ADX_VLS3_N QRPH_ADX_VLS3_D
HIV test result	HIV Positive	165816005	QRPH_ADX_HTS2_N
	HIV Negative	165815009	
PMTCT HIV status/HIV test results at enrollment	Known HIV positive	165816005**	QRPH_ADX_MTCT1_N
	Newly identified Positive	165816005*	QRPH_ADX_MTCT2_D ^{Note 1}
	Newly identified Negative	165815009*	
PMTCT ART status	New on ART	432101000124108*	QRPH_ADX_MTCT2_N
	Already on ART	432101000124108	
Pregnancy status	Pregnant	146789000	QRPH_ADX_ART1_N QRPH_ADX_ART5_N
Breastfeeding status	Breastfeeding	169750002	QRPH_ADX_ART1_N QRPH_ADX_ART5_N

Note 1: QRPH_ADX_MTCT2_D is a sum of Known HIV positive and newly identified Positive 8.5.3.1 Number of individuals who received HIV Testing Services (HTS) and received their test results

8.5.3.1 Number of individuals who received HIV Testing Services (HTS) and received their test results

480 This indicator reports the number of people who have been tested for HIV during the reporting period and who know their status. It is expressed as a number; there is a numerator but no denominator. The QRPH_ADX_HTS2_N data element SHALL report HTS results within the ADX message's specified reporting period and SHALL be disaggregated by age group, by sex, and by HIV test result (positive vs negative, with the default value set indicated by SNOMED-CT codes 165816005 and 165815009, respectively).

485 **Table 8.5.3.1-1: Number of individuals who received HIV Testing Services (HTS) and received their test results**

Indicator		Number of individuals who received HIV Testing Services (HTS) and received their test results			
Indicator Code with Mapping					
WHO/UNAIDS	PEPFAR	Global Fund	Kenya	Rwanda	
HTS.2	HTS_TST	HTS-1	HIV01	-	
Numerator		Number of individuals who received HIV Testing Services (HTS) and received their test results			
QRPH	WHO/UNAI DS	PEPFAR	Global Fund	Kenya	Rwanda
QRPH_ADX_HTS2_N	HTS.2	HTS_TST	HTS-1	HIV01	-
Denominator		N/A			
Disaggregation					
Disaggregation Name	Age Group Code	Sex Code (HL7 codes)		HIV test Result (SNOMED-CT Code)	
<1, Female, Positive	P0Y--P1Y	F		165816005	
<1, Male, Positive	P0Y--P1Y	M		165816005	
1-4, Female, Positive	P1Y--P5Y	F		165816005	
1-4, Male, Positive	P1Y--P5Y	M		165816005	
5-9, Female, Positive	P5Y--P10Y	F		165816005	
5-9, Male, Positive	P5Y--P10Y	M		165816005	
10-14, Female, Positive	P10Y--P15Y	F		165816005	
10-14, Male, Positive	P10Y--P15Y	M		165816005	
15-19, Female, Positive	P15Y--P20Y	F		165816005	
15-19, Male, Positive	P15Y--P20Y	M		165816005	
20-24, Female, Positive	P20Y--P25Y	F		165816005	
20-24, Male, Positive	P20Y--P25Y	M		165816005	
25-29, Female, Positive	P25Y--P30Y	F		165816005	
25-29, Male, Positive	P25Y--P30Y	M		165816005	
30-34, Female, Positive	P30Y--P35Y	F		165816005	
30-34, Male, Positive	P30Y--P35Y	M		165816005	

35-39, Female, Positive	P35Y--P40Y	F	165816005
35-39, Male, Positive	P35Y--P40Y	M	165816005
40-44, Female, Positive	P40Y--P45Y	F	165816005
40-44, Male, Positive	P40Y--P45Y	M	165816005
45-49, Female, Positive	P45Y--P50Y	F	165816005
45-49, Male, Positive	P45Y--P50Y	M	165816005
50+, Female, Positive	P50Y--P9999Y	F	165816005
50+, Male, Positive	P50Y--P9999Y	M	165816005
<1, Female, Negative	P0Y--P1Y	F	165815009
<1, Male, Negative	P0Y--P1Y	M	165815009
1-4, Female, Negative	P1Y--P5Y	F	165815009
1-4, Male, Negative	P1Y--P5Y	M	165815009
5-9, Female, Negative	P5Y--P10Y	F	165815009
5-9, Male, Negative	P5Y--P10Y	M	165815009
10-14, Female, Negative	P10Y--P15Y	F	165815009
10-14, Male, Negative	P10Y--P15Y	M	165815009
15-19, Female, Negative	P15Y--P20Y	F	165815009
15-19, Male, Negative	P15Y--P20Y	M	165815009
20-24, Female, Negative	P20Y--P25Y	F	165815009
20-24, Male, Negative	P20Y--P25Y	M	165815009
25-29, Female, Negative	P25Y--P30Y	F	165815009
25-29, Male, Negative	P25Y--P30Y	M	165815009
30-34, Female, Negative	P30Y--P35Y	F	165815009
30-34, Male, Negative	P30Y--P35Y	M	165815009
35-39, Female, Negative	P35Y--P40Y	F	165815009
35-39, Male, Negative	P35Y--P40Y	M	165815009
40-44, Female, Positive	P40Y--P45Y	F	165815009
40-44, Male, Positive	P40Y--P45Y	M	165815009
45-49, Female, Positive	P45Y--P50Y	F	165815009
45-49, Male, Positive	P45Y--P50Y	M	165815009
50+, Female, Negative	P50Y--P9999Y	F	165815009
50+, Male, Negative	P50Y--P9999Y	M	165815009

8.5.3.2 Proportion of pregnant women with known HIV status at antenatal care

490 This indicator reports the proportion of pregnant women with known HIV status at the time of their antenatal care (ANC). It is expressed as a percentage. The numerator is the number of women who know their HIV status at ANC entry or who are newly tested for HIV during the current pregnancy. The denominator is the total number of women who attended ANC during the reporting period. The data elements are QRPH_ADX_MTCT_N (numerator) and

QRPH_ADX_MTCT_D (denominator); they are disaggregated by HIV status at entry to the ANC for the current pregnancy.

495 Known positive at entry is the number of pregnant women attending ANC for a new pregnancy who were tested and confirmed HIV-positive at any point prior to the current pregnancy.

Newly tested positive is the number of women attending first ANC visit who were tested for HIV and received a positive result. Women who tested negative prior to this pregnancy and test positive at first ANC visit for new pregnancy are counted as newly tested positive.

500 Newly tested negatives is the number of women who test negative for HIV during the present pregnancy and have not had prior HIV test. Retesting of HIV-negative women at subsequent ANC visits, L&D, postnatal clinic or family planning clinic are counted as newly tested negative.

Table 8.5.3.2-1: Proportion of pregnant women with known HIV status at antenatal care

Indicator		Percentage of pregnant women with known HIV status at antenatal care			
Indicator Code with Mapping					
WHO/UNAIDS	PEPFAR	Global Fund	Kenya	Rwanda	
MTCT.1	PMTCT_STAT	PMTCT-1	HIV02	-	
Numerator		Number of pregnant women with known HIV status at first antenatal care visit (ANC1)			
QRPH	WHO/UNAIDS	PEPFAR	Global Fund	Kenya	Rwanda
QRPH_ADX_MTCT1_N	-	-	-	HV02-05	-
Denominator		Number of pregnant women who attended ANC or had a facility-based delivery in the reporting period			
QRPH	WHO/UNAIDS	PEPFAR	Global Fund	Kenya	Rwanda
QRPH_ADX_MTCT1_D	-	-	-	-	-
Disaggregation					
Disaggregation Name		HIV test results codes (SNOMED-CT Code)			
Known positive		165816005**			
Newly tested positive		165816005*			
Newly tested negative		165815009*			

505 **8.5.3.3 Number of adults and children newly enrolled on antiretroviral therapy (ART)**

This indicator reports the number of HIV positive persons who were newly started on ART during the reporting period. It is expressed as a number; there is a numerator but no denominator. The data element is QRPH_ADX_ART1_N and it is disaggregated by age group and by sex.

510

Table 8.5.3.3-1: Number of adults and children newly enrolled on antiretroviral therapy (ART)

Indicator		Number of adults and children newly enrolled on antiretroviral therapy (ART)			
Indicator Code with Mapping					
WHO/UNAIDS	PEPFAR	Global Fund	Kenya	Rwanda	
ART.1	TX_NEW	-	HIV03.4	-	
Numerator		Number of adults and children newly enrolled on antiretroviral therapy (ART) in the reporting period			
QRPH	WHO/UNAIDS	PEPFAR	Global Fund	Kenya	Rwanda
QRPH_ADX_ART1_N	ART.1	TX_NEW	-	HIV03.4	-
Denominator		NONE			
Disaggregation					
Disaggregation Name	Age Group Code	Sex Code		other Code	
<1, Female	P0Y--P1Y	F			
<1, Male	P0Y--P1Y	M			
1-4, Female	P1Y--P5Y	F			
1-4, Male	P1Y--P5Y	M			
5-9, Female	P5Y--P10Y	F			
5-9, Male	P5Y--P10Y	M			
10-14, Female	P10Y--P15Y	F			
10-14, Male	P10Y--P15Y	M			
15-19, Female	P15Y--P20Y	F			
15-19, Male	P15Y--P20Y	M			
20-24, Female	P20Y--P25Y	F			
20-24, Male	P20Y--P25Y	M			
25-29, Female	P25Y--P30Y	F			
25-29, Male	P25Y--P30Y	M			
30-34, Female	P30Y--P35Y	F			
30-34, Male	P30Y--P35Y	M			
35-39, Female	P35Y--P40Y	F			
35-39, Male	P35Y--P40Y	M			
40-49, Female	P40Y--P50Y	F			
40-49, Male	P40Y--P50Y	M			
50+, Female	P50Y--P9999Y	F			
50+, Male	P50Y--P9999Y	M			
Pregnant		F		146789000	
Breastfeeding		F		169750002	

8.5.3.4 Proportion of people living with HIV who are receiving antiretroviral therapy (ART)

- 515 This indicator reports the proportion of people living with HIV who are receiving ART. It is expressed as a percentage. The numerator is the number of people living with HIV currently receiving ART during the reporting period. The denominator is the estimated total number of people living with HIV. Generally, this denominator is not generated from individual health facilities but it is estimated using modelling estimates such as Spectrum AIM. The data element
- 520 is QRPH_ADX_ART3_N (numerator) and it is disaggregated by age group, and by sex.

Table 8.5.3.4-1: Proportion of people living with HIV who are receiving antiretroviral therapy (ART)

Indicator		Percentage of people living with HIV who are receiving antiretroviral therapy (ART)			
Indicator Code with Mapping					
WHO/UNAIDS	PEPFAR	Global Fund	Kenya	Rwanda	
ART.3	TX_CURR	TCS-1	HIV03.6	-	
Numerator		Number of adults and children currently receiving antiretroviral therapy (ART)			
QRPH	WHO/UNAIDS	PEPFAR	Global Fund	Kenya	Rwanda
QRPH_ADX_ART3_N	ART.3	TX_CURR	TCS-1	HIV03.6	-
Denominator		Estimated number of people living with HIV. Note: This denominator is generated at an above health facility level			
Disaggregation					
Disaggregation Name	Age Group Code	Sex Code		Notes	
<1, Female	P0Y--P1Y	F			
<1, Male	P0Y--P1Y	M			
1-4, Female	P1Y--P5Y	F			
1-4, Male	P1Y--P5Y	M			
5-9, Female	P5Y--P10Y	F			
5-9, Male	P5Y--P10Y	M			
10-14, Female	P10Y--P15Y	F			
10-14, Male	P10Y--P15Y	M			
15-19, Female	P15Y--P20Y	F			
15-19, Male	P15Y--P20Y	M			
20-24, Female	P20Y--P25Y	F			
20-24, Male	P20Y--P25Y	M			
25-29, Female	P25Y--P30Y	F			
25-29, Male	P25Y--P30Y	M			
30-34, Female	P30Y--P35Y	F			
30-34, Male	P30Y--P35Y	M			

35-39, Female	P35Y--P40Y	F	
35-39, Male	P35Y--P40Y	M	
40-44, Female, Positive	P40Y--P45Y	F	
40-44, Male, Positive	P40Y--P45Y	M	
45-49, Female, Positive	P45Y--P50Y	F	
45-49, Male, Positive	P45Y--P50Y	M	
50+, Female	P50Y--P9999Y	F	
50+, Male	P50Y--P9999Y	M	

525 **8.5.3.5 Proportion of HIV-positive pregnant women who received antiretroviral treatment to reduce risk of mother-to-child-transmission (MTCT) during pregnancy.**

530 This indicator reports the proportion of pregnant women who received ART during pregnancy. It is expressed as a percentage. The numerator is the number of women who were newly started on ART or already on ART at the beginning of the current pregnancy. The denominator is the total number of women who are known to be HIV positive, which include known HIV positive and newly tested HIV positive, during the reporting period. The data elements are QRPH_ADX_MTCT2_N (numerator) and QRPH_ADX_MTCT2_D (denominator); they are disaggregated by new on ART and already on ART during the current pregnancy.

535 **Table 8.5.3.5-1: Proportion of HIV-positive pregnant women who received antiretroviral treatment to reduce risk of mother-to-child-transmission (MTCT) during pregnancy.**

Indicator		Percentage of HIV-positive pregnant women who received antiretroviral treatment to reduce risk of mother-to-child-transmission (MTCT) during pregnancy.			
Indicator Code with Mapping					
WHO/UNAIDS	PEPFAR	Global Fund	Kenya	Rwanda	
MTCT.2	PMTCT_ART	PMTCT-2.1	HIV02-03	-	
Numerator		Number of HIV-positive pregnant women who received ART to reduce the risk of mother-to-child-transmission during pregnancy			
QRPH	WHO/UNAIDS	PEPFAR	Global Fund	Kenya	Rwanda
QRPH_ADX_MTCT2_N				HV02-15	
Denominator		Number of HIV positive pregnant women who delivered within the reporting period and attended ANC or had a facility-based delivery.			
QRPH	WHO/UNAIDS	PEPFAR	Global Fund	Kenya	Rwanda
QRPH_ADX_MTCT2_D				HV02-09	
Disaggregation					

Disaggregation Name	Code	Notes
Already on ART	432101000124108	
New on ART	432101000124108*	

8.5.3.6 Proportion of adults and children known to be alive and on treatment 12 months after initiation of antiretroviral therapy

540 This indicator reports the proportion of people living with HIV known to be alive and on
 treatment 12 months after initiating ART. It is expressed as a percentage. The numerator is the
 total number of people who are still on ART treatment at 12 months after initiating ART. The
 denominator is the total number of people who initiated ART 12 months prior to the beginning of
 the reporting period, including those who died and those who stopped ART treatment. The data
 elements are QRPH_ADX_ART5_N (numerator) and QRPH_ADX_ART5_D (denominator);
 545 they are disaggregated by age group, and by sex. There is an additional disaggregation for those
 who are pregnant and breastfeeding mothers.

Table 8.5.3.6-1: Proportion of adults and children known to be alive and on treatment 12 months after initiation of antiretroviral therapy

Indicator		Percentage of adults and children known to be alive and on treatment 12 months after initiation of antiretroviral therapy			
Indicator Code with Mapping					
WHO/UNAIDS	PEPFAR	Global Fund	Kenya	Rwanda	
ART.5		HIV 0-1	HIV03-11	-	
Numerator		Number of adults and children who are still on treatment at 12 months after initiating ART			
QRPH	WHO/UNAIDS	PEPFAR	Global Fund	Kenya	Rwanda
QRPH_ADX_ART5_N				HV03-096	
Denominator		Total number of adults and children who initiated ART in the 12 months prior to the beginning of the reporting period, including those who have died and those who have stopped ART.			
QRPH	WHO/UNAIDS	PEPFAR	Global Fund	Kenya	Rwanda
QRPH_ADX_ART5_D			-	HV03-097	
Disaggregation					
Disaggregate group(s)		Age Group and Sex			
Disaggregation Name	Age Group Code	Sex Code		Other Code	
<1, Female	P0Y--P1Y	F			
<1, Male	P0Y--P1Y	M			
1-4, Female	P1Y--P5Y	F			
1-4, Male	P1Y--P5Y	M			

5-9, Female	P5Y--P10Y	F	
5-9, Male	P5Y--P10Y	M	
10-14, Female	P10Y--P15Y	F	
10-14, Male	P10Y--P15Y	M	
15-19, Female	P15Y--P20Y	F	
15-19, Male	P15Y--P20Y	M	
20-24, Female	P20Y--P25Y	F	
20-24, Male	P20Y--P25Y	M	
25-29, Female	P25Y--P30Y	F	
25-29, Male	P25Y--P30Y	M	
30-34, Female	P30Y--P35Y	F	
30-34, Male	P30Y--P35Y	M	
35-39, Female	P35Y--P40Y	F	
35-39, Male	P35Y--P40Y	M	
40-44, Female, Positive	P40Y--P45Y	F	
40-44, Male, Positive	P40Y--P45Y	M	
45-49, Female, Positive	P45Y--P50Y	F	
45-49, Male, Positive	P45Y--P50Y	M	
50+, Female	P50Y--P9999Y	F	
50+, Male	P50Y--P9999Y	M	
Pregnant at start of ART		F	146789000
Breastfeeding at start of ART		F	169750002

550 **8.5.3.7 Proportion of people living with HIV and on ART who are virologically suppressed**

555 This indicator reports the proportion of patients on ART with a viral load result documented within the past 12 months with a suppressed viral load. It is expressed as a percentage. The numerator is the number of people number of people living with HIV and on ART who have a suppressed viral load (<1000 copies/mL) documented within the past 12 months. The denominator is the number of people number of people living with HIV and on ART who have a viral load result documented in the past 12 months. The data elements are QRPH_ADX_VLS3_N (numerator) and QRPH_ADX_VLS3_D (denominator); they are disaggregated by age group, and by sex. There is an additional disaggregation for those who are pregnant and breastfeeding mothers.

560

Table 8.5.3.7-1: Proportion of people living with HIV and on ART who are virologically suppressed

Indicator	Percentage of people living with HIV and on ART who are virologically suppressed
------------------	--

Indicator Code with Mapping					
WHO/UNAIDS	PEPFAR	Global Fund	Kenya	Rwanda	
VLS.3	TX_PVLS	-	HIV03-12	-	
Numerator		Number of people living with HIV and on ART who have a suppressed viral load results (<1000 copies/mL).			
QRPH	WHO/UNAIDS	PEPFAR	Global Fund	Kenya	Rwanda
QRPH_ADX_VLS3_N		TX_PVLS	HIV03-098		
Denominator		Number of people currently receiving ART.			
QRPH	WHO/UNAIDS	PEPFAR	Global Fund	Kenya	Rwanda
QRPH_ADX_ART3_N	ART.3	TX_CURR	TCS-1	HIV03.6	
Disaggregation					
Disaggregation Name	Age Group Code	Sex Code		Other code	
<1, Female	P0Y--P1Y	F			
<1, Male	P0Y--P1Y	M			
1-4, Female	P1Y--P5Y	F			
1-4, Male	P1Y--P5Y	M			
5-9, Female	P5Y--P10Y	F			
5-9, Male	P5Y--P10Y	M			
10-14, Female	P10Y--P15Y	F			
10-14, Male	P10Y--P15Y	M			
15-19, Female	P15Y--P20Y	F			
15-19, Male	P15Y--P20Y	M			
20-24, Female	P20Y--P25Y	F			
20-24, Male	P20Y--P25Y	M			
25-29, Female	P25Y--P30Y	F			
25-29, Male	P25Y--P30Y	M			
30-34, Female	P30Y--P35Y	F			
30-34, Male	P30Y--P35Y	M			
35-39, Female	P35Y--P40Y	F			
35-39, Male	P35Y--P40Y	M			
40-44, Female, Positive	P40Y--P45Y	F			
40-44, Male, Positive	P40Y--P45Y	M			
45-49, Female, Positive	P45Y--P50Y	F			
45-49, Male, Positive	P45Y--P50Y	M			
50+, Female	P50Y--P9999Y	F			
50+, Male	P50Y--P9999Y	M			

565 The ADX-HIV Content Profile Content Data Structure Creator creates ADX-conformant DSD and XSD files for HIV core indicators. The ADX-HIV Content Data Structure Creator will use

harmonized metadata (codelists with data elements and associated disaggregation) to represent HIV core indicators published by several implementing jurisdictions globally.

570 Content Creators and Content Consumers conformant with the ADX-HIV Content Profile SHALL exchange data messages that conform to the ADX-HIV content schema. A sample ADX-HIV compliant data payload is provided in the informative Appendix 8D.

Appendices to Section 8

Appendix 8A – (Normative) ADX-HIV DSD

575 An electronic copy of the file is available at ftp://ftp.ihe.net/TF_Implementation_Material/QRPH/ADX-HIV/adx-hiv_DSD.xml. In case of any difference between the electronic copy and the appendix below, this appendix SHALL be considered normative.

```
580 <?xml-model href="../../../schema/dsd_validation.sch" type="application/xml"
schematypens="http://purl.oclc.org/dsdl/schematron"?>
<mes:Structure xmlns:xsi="http://www.w3.org/2001/XMLSchema-instance"
xmlns:com="http://www.sdmx.org/resources/sdmxml/schemas/v2_1/common"
xmlns:str="http://www.sdmx.org/resources/sdmxml/schemas/v2_1/structure"
xmlns:mes="http://www.sdmx.org/resources/sdmxml/schemas/v2_1/message"
xsi:schemaLocation="http://www.sdmx.org/resources/sdmxml/schemas/v2_1/message ../schema/sdmx/SDMXMessage.xsd">
585   <mes:Header>
     <mes:ID>DSD_ADX_HIV</mes:ID>
     <mes:Test>>false</mes:Test>
     <mes:Prepared>2018-11-29T16:27:06.00Z</mes:Prepared>
     <mes:Sender id="DHIS2_OPENHIE_SANDBOX"/>
590   </mes:Header>
   <mes:Structures>
     <str:Codelists>
       <Codelist xmlns="http://www.sdmx.org/resources/sdmxml/schemas/v2_1/structure" id="CL_ORGUNIT"
agencyID="IHE_QRPH" version="1.0" isExternalReference="true" structureURL="https://placeholder.ref">
595         <!-- CL_ORGUNIT is mandatory for ADX. A jurisdictions should provide this information as a list or
reference URL. Each org unit in the list should have an ORGUNIT id and ORGUNIT name. CL_ORGUNIT codelist is represented
in the DSD as follows
         <Name xmlns="http://www.sdmx.org/resources/sdmxml/schemas/v2_1/common" xml:lang="en">OrgUnit code
list</Name>
600         <Code id="ORGUNIT_CODE">
           <Name xmlns="http://www.sdmx.org/resources/sdmxml/schemas/v2_1/common" xml:lang="en">ORGUNIT
name</Name>
           </Code> -->
         </Codelist>
       <Codelist xmlns="http://www.sdmx.org/resources/sdmxml/schemas/v2_1/structure" id="CL_DATAELEMENT"
605         agencyID="IHE_QRPH" version="1.0">
           <Name xmlns="http://www.sdmx.org/resources/sdmxml/schemas/v2_1/common" xml:lang="en">DataElement code
list</Name>
           <Code id="QRPH_ADX_HTS2_N">
610             <Annotations xmlns="http://www.sdmx.org/resources/sdmxml/schemas/v2_1/common">
               <Annotation xmlns="http://www.sdmx.org/resources/sdmxml/schemas/v2_1/common"
id="Disaggregation">
                 <AnnotationText
xmlns="http://www.sdmx.org/resources/sdmxml/schemas/v2_1/common">AGE_GROUP</AnnotationText>
                 </Annotation>
             </Annotations>
           </Code>
         </Codelist>
     </str:Codelists>
   </mes:Structures>
</mes:Structure>
```

```

615         <Annotation xmlns="http://www.sdmx.org/resources/sdmxml/schemas/v2_1/common"
id="Disaggregation">
                <AnnotationText
xmlns="http://www.sdmx.org/resources/sdmxml/schemas/v2_1/common">SEX</AnnotationText>
                </Annotation>
620         <Annotation xmlns="http://www.sdmx.org/resources/sdmxml/schemas/v2_1/common"
id="Disaggregation">
                <AnnotationText
xmlns="http://www.sdmx.org/resources/sdmxml/schemas/v2_1/common">HIV_TEST_RESULTS</AnnotationText>
                </Annotation>
625         </Annotations>
                <Name xmlns="http://www.sdmx.org/resources/sdmxml/schemas/v2_1/common" xml:lang="en">Number of
individuals who received HIV Testing Services (HTS) and received their test results</Name>
                </Code>
                <Code id="QRPH_ADX_ART5_N_BF">
630         <Annotations xmlns="http://www.sdmx.org/resources/sdmxml/schemas/v2_1/common">
                <Annotation xmlns="http://www.sdmx.org/resources/sdmxml/schemas/v2_1/common"
id="Disaggregation">
                        <AnnotationText
xmlns="http://www.sdmx.org/resources/sdmxml/schemas/v2_1/common">BF</AnnotationText>
                        </Annotation>
635         </Annotations>
                <Name xmlns="http://www.sdmx.org/resources/sdmxml/schemas/v2_1/common" xml:lang="en">Number of
adults and children who are still on treatment at 12 months after initiating ART_breastfeeding</Name>
                </Code>
640         <Code id="QRPH_ADX_ART5_D">
                <Annotations xmlns="http://www.sdmx.org/resources/sdmxml/schemas/v2_1/common">
                <Annotation xmlns="http://www.sdmx.org/resources/sdmxml/schemas/v2_1/common"
id="Disaggregation">
                        <AnnotationText
645         xmlns="http://www.sdmx.org/resources/sdmxml/schemas/v2_1/common">AGE_GROUP</AnnotationText>
                        </Annotation>
                <Annotation xmlns="http://www.sdmx.org/resources/sdmxml/schemas/v2_1/common"
id="Disaggregation">
                        <AnnotationText
650         xmlns="http://www.sdmx.org/resources/sdmxml/schemas/v2_1/common">SEX</AnnotationText>
                        </Annotation>
                </Annotations>
                <Name xmlns="http://www.sdmx.org/resources/sdmxml/schemas/v2_1/common" xml:lang="en">Total number
of adults and children who initiated ART in the 12 months prior to the beginning of the reporting period</Name>
655         </Code>
                <Code id="QRPH_ADX_ART5_N_PREG_BF">

```

```

        <Annotations xmlns="http://www.sdmx.org/resources/sdmxml/schemas/v2_1/common">
          <Annotation xmlns="http://www.sdmx.org/resources/sdmxml/schemas/v2_1/common"
660 id="Disaggregation">
            <AnnotationText
xmlns="http://www.sdmx.org/resources/sdmxml/schemas/v2_1/common">PREG</AnnotationText>
            </Annotation>
          </Annotations>
          <Name xmlns="http://www.sdmx.org/resources/sdmxml/schemas/v2_1/common" xml:lang="en">Number of
665 adults and children who are still on treatment at 12 months after initiating ART-pregnant </Name>
            </Code>
            <Code id="QRPH_ADX_ART1_N_BF">
              <Annotations xmlns="http://www.sdmx.org/resources/sdmxml/schemas/v2_1/common">
670 id="Disaggregation">
                <Annotation xmlns="http://www.sdmx.org/resources/sdmxml/schemas/v2_1/common"
                    <AnnotationText
xmlns="http://www.sdmx.org/resources/sdmxml/schemas/v2_1/common">BF</AnnotationText>
                    </Annotation>
                </Annotations>
                <Name xmlns="http://www.sdmx.org/resources/sdmxml/schemas/v2_1/common" xml:lang="en">Number of
675 adults and children newly enrolled on ART in the reporting period_breastfeeding</Name>
                    </Code>
                    <Code id="QRPH_ADX_MTCT1_N">
                      <Annotations xmlns="http://www.sdmx.org/resources/sdmxml/schemas/v2_1/common">
680 id="Disaggregation">
                        <Annotation xmlns="http://www.sdmx.org/resources/sdmxml/schemas/v2_1/common"
                            <AnnotationText
xmlns="http://www.sdmx.org/resources/sdmxml/schemas/v2_1/common">PMTCT_HIV_STATUS</AnnotationText>
                            </Annotation>
                        </Annotations>
                        <Name xmlns="http://www.sdmx.org/resources/sdmxml/schemas/v2_1/common" xml:lang="en">Number of
685 pregnant women with known HIV status at first antenatal care visit</Name>
                            </Code>
                            <Code id="QRPH_ADX_MTCT1_D">
                              <Annotations xmlns="http://www.sdmx.org/resources/sdmxml/schemas/v2_1/common">
690 id="Disaggregation">
                                  <Annotation xmlns="http://www.sdmx.org/resources/sdmxml/schemas/v2_1/common"
                                      <AnnotationText
xmlns="http://www.sdmx.org/resources/sdmxml/schemas/v2_1/common">PMTCT_HIV_STATUS</AnnotationText>
                                      </Annotation>
                                  </Annotations>
                                  <Name xmlns="http://www.sdmx.org/resources/sdmxml/schemas/v2_1/common" xml:lang="en">Number of
695 pregnant women who attended ANC or had a facility-based delivery in the reporting period</Name>
                                      </Code>
                                      </Annotations>
                                </Code>
                              </Annotations>
                            </Code>
                        </Annotations>
                    </Code>
                </Annotations>
          </Code>
        </Annotations>

```

```

700         </Code>
         <Code id="QRPH_ADX_MTCT2_N">
           <Annotations xmlns="http://www.sdmx.org/resources/sdmxml/schemas/v2_1/common">
             <Annotation xmlns="http://www.sdmx.org/resources/sdmxml/schemas/v2_1/common"
id="Disaggregation">
705               <AnnotationText
xmlns="http://www.sdmx.org/resources/sdmxml/schemas/v2_1/common">PMTCT_ART_STATUS</AnnotationText>
             </Annotation>
           </Annotations>
           <Name xmlns="http://www.sdmx.org/resources/sdmxml/schemas/v2_1/common" xml:lang="en">Number of HIV-
710 positive pregnant women who received ART to reduce the risk of mother-to-child-transmission during pregnancy</Name>
         </Code>
         <Code id="QRPH_ADX_VLS3_D">
           <Annotations xmlns="http://www.sdmx.org/resources/sdmxml/schemas/v2_1/common">
             <Annotation xmlns="http://www.sdmx.org/resources/sdmxml/schemas/v2_1/common"
id="Disaggregation">
715               <AnnotationText
xmlns="http://www.sdmx.org/resources/sdmxml/schemas/v2_1/common">AGE_GROUP</AnnotationText>
             </Annotation>
           </Annotations>
           <Annotation xmlns="http://www.sdmx.org/resources/sdmxml/schemas/v2_1/common"
id="Disaggregation">
720               <AnnotationText
xmlns="http://www.sdmx.org/resources/sdmxml/schemas/v2_1/common">SEX</AnnotationText>
             </Annotation>
           </Annotations>
           <Name xmlns="http://www.sdmx.org/resources/sdmxml/schemas/v2_1/common" xml:lang="en">Number of
725 people on ART who had a VL measurement in the past 12 months.</Name>
         </Code>
         <Code id="QRPH_ADX_ART3_N">
           <Annotations xmlns="http://www.sdmx.org/resources/sdmxml/schemas/v2_1/common">
             <Annotation xmlns="http://www.sdmx.org/resources/sdmxml/schemas/v2_1/common"
id="Disaggregation">
730               <AnnotationText
xmlns="http://www.sdmx.org/resources/sdmxml/schemas/v2_1/common">AGE_GROUP</AnnotationText>
             </Annotation>
           </Annotations>
           <Annotation xmlns="http://www.sdmx.org/resources/sdmxml/schemas/v2_1/common"
id="Disaggregation">
735               <AnnotationText
xmlns="http://www.sdmx.org/resources/sdmxml/schemas/v2_1/common">SEX</AnnotationText>
             </Annotation>
           </Annotations>

```

```

740         <Name xmlns="http://www.sdmx.org/resources/sdmxml/schemas/v2_1/common" xml:lang="en">Number of
adults and children currently receiving antiretroviral therapy (ART)</Name>
        </Code>
        <Code id="QRPH_ADX_ART1_N">
745         <Annotations xmlns="http://www.sdmx.org/resources/sdmxml/schemas/v2_1/common">
            <Annotation xmlns="http://www.sdmx.org/resources/sdmxml/schemas/v2_1/common"
id="Disaggregation">
                <AnnotationText
xmlns="http://www.sdmx.org/resources/sdmxml/schemas/v2_1/common">AGE_GROUP</AnnotationText>
                </Annotation>
750         <Annotation xmlns="http://www.sdmx.org/resources/sdmxml/schemas/v2_1/common"
id="Disaggregation">
                <AnnotationText
xmlns="http://www.sdmx.org/resources/sdmxml/schemas/v2_1/common">SEX</AnnotationText>
                </Annotation>
755         </Annotations>
        <Name xmlns="http://www.sdmx.org/resources/sdmxml/schemas/v2_1/common" xml:lang="en">Number of
adults and children newly enrolled on antiretroviral therapy (ART) in the reporting period</Name>
        </Code>
760         <Code id="QRPH_ADX_ART1_N_PREG_BF">
            <Annotations xmlns="http://www.sdmx.org/resources/sdmxml/schemas/v2_1/common">
                <Annotation xmlns="http://www.sdmx.org/resources/sdmxml/schemas/v2_1/common"
id="Disaggregation">
                    <AnnotationText
xmlns="http://www.sdmx.org/resources/sdmxml/schemas/v2_1/common">PREG</AnnotationText>
                    </Annotation>
765         </Annotations>
            <Name xmlns="http://www.sdmx.org/resources/sdmxml/schemas/v2_1/common" xml:lang="en">Number of
adults and children newly enrolled on ART in the reporting period_pregnant </Name>
            </Code>
770         <Code id="QRPH_ADX_ART5_N">
            <Annotations xmlns="http://www.sdmx.org/resources/sdmxml/schemas/v2_1/common">
                <Annotation xmlns="http://www.sdmx.org/resources/sdmxml/schemas/v2_1/common"
id="Disaggregation">
                    <AnnotationText
xmlns="http://www.sdmx.org/resources/sdmxml/schemas/v2_1/common">AGE_GROUP</AnnotationText>
                    </Annotation>
775         <Annotation xmlns="http://www.sdmx.org/resources/sdmxml/schemas/v2_1/common"
id="Disaggregation">
                    <AnnotationText
xmlns="http://www.sdmx.org/resources/sdmxml/schemas/v2_1/common">SEX</AnnotationText>
                    </Annotation>
780         </Annotations>
    
```



```

785         </Annotations>
           <Name xmlns="http://www.sdmx.org/resources/sdmxml/schemas/v2_1/common" xml:lang="en">Number of
adults and children who are still on treatment at 12 months after initiating ART</Name>
           </Code>
           <Code id="QRPH_ADX_VLS3_N">
790             <Annotations xmlns="http://www.sdmx.org/resources/sdmxml/schemas/v2_1/common">
               <Annotation xmlns="http://www.sdmx.org/resources/sdmxml/schemas/v2_1/common"
id="Disaggregation">
                 <AnnotationText
795                   xmlns="http://www.sdmx.org/resources/sdmxml/schemas/v2_1/common">AGE_GROUP</AnnotationText>
                 </Annotation>
                 <Annotation xmlns="http://www.sdmx.org/resources/sdmxml/schemas/v2_1/common"
id="Disaggregation">
                 <AnnotationText
800                   xmlns="http://www.sdmx.org/resources/sdmxml/schemas/v2_1/common">SEX</AnnotationText>
                 </Annotation>
               </Annotations>
           <Name xmlns="http://www.sdmx.org/resources/sdmxml/schemas/v2_1/common" xml:lang="en">Number of
people living with HIV and on ART who have a suppressed viral load results ( less than1000 copies/mL).</Name>
           </Code>
           <Code id="QRPH_ADX_MTCT2_D">
805             <Name xmlns="http://www.sdmx.org/resources/sdmxml/schemas/v2_1/common" xml:lang="en">Number of HIV
positive pregnant women who attended ANC or had a facility-based delivery within the reporting period</Name>
           </Code>
           </Codelist>
           <Codelist xmlns="http://www.sdmx.org/resources/sdmxml/schemas/v2_1/structure" id="CL_PREG"
agencyID="IHE_QRPH" version="1.0">
810             <Name xmlns="http://www.sdmx.org/resources/sdmxml/schemas/v2_1/common" xml:lang="en">Pregnancy
status</Name>
               <Code id="146789000">
                 <Name xmlns="http://www.sdmx.org/resources/sdmxml/schemas/v2_1/common"
815                   xml:lang="en">Pregnant</Name>
                 </Code>
               </Codelist>
           <Codelist xmlns="http://www.sdmx.org/resources/sdmxml/schemas/v2_1/structure" id="CL_HIV_TEST_RESULTS"
agencyID="IHE_QRPH" version="1.0">
820             <Name xmlns="http://www.sdmx.org/resources/sdmxml/schemas/v2_1/common" xml:lang="en">HIV test
results</Name>
               <Code id="165815009">
                 <Name xmlns="http://www.sdmx.org/resources/sdmxml/schemas/v2_1/common" xml:lang="en">HIV
Negative</Name>
               </Code>

```

```

825         <Code id="165816005">
            <Name xmlns="http://www.sdmx.org/resources/sdmxml/schemas/v2_1/common" xml:lang="en">HIV
Positive</Name>
            </Code>
        </Codelist>
830     <Codelist xmlns="http://www.sdmx.org/resources/sdmxml/schemas/v2_1/structure" id="CL_SEX"
agencyID="IHE_QRPH" version="1.0">
        <Name xmlns="http://www.sdmx.org/resources/sdmxml/schemas/v2_1/common" xml:lang="en">Sex</Name>
        <Code id="F">
            <Name xmlns="http://www.sdmx.org/resources/sdmxml/schemas/v2_1/common" xml:lang="en">Female</Name>
835         </Code>
        <Code id="M">
            <Name xmlns="http://www.sdmx.org/resources/sdmxml/schemas/v2_1/common" xml:lang="en">Male</Name>
            </Code>
        </Codelist>
840     <Codelist xmlns="http://www.sdmx.org/resources/sdmxml/schemas/v2_1/structure" id="CL_BF"
agencyID="IHE_QRPH" version="1.0">
        <Name xmlns="http://www.sdmx.org/resources/sdmxml/schemas/v2_1/common" xml:lang="en">Breastfeeding
status</Name>
        <Code id="169750002">
845         <Name xmlns="http://www.sdmx.org/resources/sdmxml/schemas/v2_1/common"
xml:lang="en">Breastfeeding</Name>
            </Code>
        </Codelist>
850     <Codelist xmlns="http://www.sdmx.org/resources/sdmxml/schemas/v2_1/structure" id="CL_PMTCT_HIV_STATUS"
agencyID="IHE_QRPH" version="1.0">
        <Name xmlns="http://www.sdmx.org/resources/sdmxml/schemas/v2_1/common" xml:lang="en">PMTCT HIV
status</Name>
        <Code id="165816005**">
855         <Name xmlns="http://www.sdmx.org/resources/sdmxml/schemas/v2_1/common" xml:lang="en">Known HIV
positive</Name>
            </Code>
        <Code id="165816005*">
            <Name xmlns="http://www.sdmx.org/resources/sdmxml/schemas/v2_1/common" xml:lang="en">Newly
identified HIV Positive</Name>
860         </Code>
        <Code id="165815009*">
            <Name xmlns="http://www.sdmx.org/resources/sdmxml/schemas/v2_1/common" xml:lang="en">Newly
identified HIV negative</Name>
            </Code>
        </Codelist>

```

```

865         <Codelist xmlns="http://www.sdmx.org/resources/sdmxml/schemas/v2_1/structure" id="CL_AGE_GROUP"
agencyID="IHE_QRPH" version="1.0">
      <Name xmlns="http://www.sdmx.org/resources/sdmxml/schemas/v2_1/common" xml:lang="en">Age group</Name>
      <Code id="P0Y--P1Y">
870         <Name xmlns="http://www.sdmx.org/resources/sdmxml/schemas/v2_1/common" xml:lang="en">Less than 1
year</Name>
      </Code>
      <Code id="P1Y--P5Y">
875         <Name xmlns="http://www.sdmx.org/resources/sdmxml/schemas/v2_1/common" xml:lang="en">1-
4Years</Name>
      </Code>
      <Code id="P5Y--P10Y">
880         <Name xmlns="http://www.sdmx.org/resources/sdmxml/schemas/v2_1/common" xml:lang="en">5-9
Years</Name>
      </Code>
      <Code id="P10Y--P15Y">
885         <Name xmlns="http://www.sdmx.org/resources/sdmxml/schemas/v2_1/common" xml:lang="en">10-14
Years</Name>
      </Code>
      <Code id="P15Y--P20Y">
890         <Name xmlns="http://www.sdmx.org/resources/sdmxml/schemas/v2_1/common" xml:lang="en">15-19
Years</Name>
      </Code>
      <Code id="P20Y--P25Y ">
895         <Name xmlns="http://www.sdmx.org/resources/sdmxml/schemas/v2_1/common" xml:lang="en">20-24
Years</Name>
      </Code>
      <Code id="P25Y--P30Y">
900         <Name xmlns="http://www.sdmx.org/resources/sdmxml/schemas/v2_1/common" xml:lang="en">25-29
Years</Name>
      </Code>
      <Code id="P30Y--P35Y">
905         <Name xmlns="http://www.sdmx.org/resources/sdmxml/schemas/v2_1/common" xml:lang="en">30-34
Years</Name>
      </Code>
      <Code id="P35Y--P40Y">
          <Name xmlns="http://www.sdmx.org/resources/sdmxml/schemas/v2_1/common" xml:lang="en">35-39
Years</Name>
      </Code>
      <Code id="P40Y--P45Y">
          <Name xmlns="http://www.sdmx.org/resources/sdmxml/schemas/v2_1/common" xml:lang="en">40-44
Years</Name>

```

```

910      </Code>
      <Code id="P45Y--P50Y">
        <Name xmlns="http://www.sdmx.org/resources/sdmxml/schemas/v2_1/common" xml:lang="en">45-49
Years</Name>
      </Code>
      <Code id="P50Y--P9999Y">
        <Name xmlns="http://www.sdmx.org/resources/sdmxml/schemas/v2_1/common" xml:lang="en">50+
915 Years</Name>
      </Code>
    </Codelist>
    <Codelist xmlns="http://www.sdmx.org/resources/sdmxml/schemas/v2_1/structure" id="CL_PMTCT_ART_STATUS"
agencyID="IHE_QRPH" version="1.0">
920   <Name xmlns="http://www.sdmx.org/resources/sdmxml/schemas/v2_1/common" xml:lang="en">PMTCT ART
status</Name>
     <Code id="432101000124108">
       <Name xmlns="http://www.sdmx.org/resources/sdmxml/schemas/v2_1/common" xml:lang="en">Already on
ART</Name>
925     </Code>
     <Code id="432101000124108*">
       <Name xmlns="http://www.sdmx.org/resources/sdmxml/schemas/v2_1/common" xml:lang="en">New on
ART</Name>
     </Code>
  </Codelist>
</str:Codelists>
930 <str:Concepts>
  <!-- ADX Mandatory concepts -->
  <str:ConceptScheme id="ADX_MANDATORY_CONCEPTS" agencyID="IHE_QRPH" version="1.0">
    <com:Name xml:lang="en">Mandatory concepts defined by IHE ADX profile</com:Name>
935    <!-- There is no default representation for these concepts.  An Agency which makes
         use of these to construct an ADX DataStructure has to provide a local representation -->
    <str:Concept id="dataElement">
      <com:Name xml:lang="en">Subject of the data measure</com:Name>
940    </str:Concept>
    <str:Concept id="orgUnit">
      <com:Name xml:lang="en">Spatial dimension of the measure</com:Name>
    </str:Concept>
    <str:Concept id="period">
      <com:Name xml:lang="en">Temporal dimension of the measure</com:Name>
945    </str:Concept>
    <!-- The value concept is represented by an integer or real number (xsd:decimal)-->
    <str:Concept id="value">
      <com:Name xml:lang="en">Value of the data measure</com:Name>

```

```

950         <str:CoreRepresentation>
           <str:TextFormat textType="Decimal"/>
         </str:CoreRepresentation>
       </str:Concept>
     </str:ConceptScheme>
     <ConceptScheme xmlns="http://www.sdmx.org/resources/sdmxml/schemas/v2_1/structure" id="IHE_QRPH_CONCEPTS"
955 agencyID="IHE_QRPH" version="1.0">
       <Name xmlns="http://www.sdmx.org/resources/sdmxml/schemas/v2_1/common" xml:lang="en">IHE_QRPH
concepts</Name>
       <Concept id="AGE_GROUP">
         <Name xmlns="http://www.sdmx.org/resources/sdmxml/schemas/v2_1/common" xml:lang="en">Age
960 group</Name>
         <CoreRepresentation xmlns="http://www.sdmx.org/resources/sdmxml/schemas/v2_1/structure">
           <Enumeration xmlns="http://www.sdmx.org/resources/sdmxml/schemas/v2_1/structure">
             <Ref xmlns="" agencyID="IHE_QRPH" version="1.0" id="CL_AGE_GROUP"/>
           </Enumeration>
         </CoreRepresentation>
965 </Concept>
       <Concept id="SEX">
         <Name xmlns="http://www.sdmx.org/resources/sdmxml/schemas/v2_1/common" xml:lang="en">Sex</Name>
970 <CoreRepresentation xmlns="http://www.sdmx.org/resources/sdmxml/schemas/v2_1/structure">
           <Enumeration xmlns="http://www.sdmx.org/resources/sdmxml/schemas/v2_1/structure">
             <Ref xmlns="" agencyID="IHE_QRPH" version="1.0" id="CL_SEX"/>
           </Enumeration>
         </CoreRepresentation>
975 </Concept>
       <Concept id="HIV_TEST_RESULTS">
         <Name xmlns="http://www.sdmx.org/resources/sdmxml/schemas/v2_1/common" xml:lang="en">HIV test
980 results</Name>
         <CoreRepresentation xmlns="http://www.sdmx.org/resources/sdmxml/schemas/v2_1/structure">
           <Enumeration xmlns="http://www.sdmx.org/resources/sdmxml/schemas/v2_1/structure">
             <Ref xmlns="" agencyID="IHE_QRPH" version="1.0" id="CL_HIV_TEST_RESULTS"/>
           </Enumeration>
         </CoreRepresentation>
985 </Concept>
       <Concept id="BF">
         <Name xmlns="http://www.sdmx.org/resources/sdmxml/schemas/v2_1/common" xml:lang="en">Breastfeeding
990 status</Name>
         <CoreRepresentation xmlns="http://www.sdmx.org/resources/sdmxml/schemas/v2_1/structure">
           <Enumeration xmlns="http://www.sdmx.org/resources/sdmxml/schemas/v2_1/structure">
             <Ref xmlns="" agencyID="IHE_QRPH" version="1.0" id="CL_BF"/>
           </Enumeration>

```

```

    </CoreRepresentation>
  </Concept>
  <Concept id="PREG">
    <Name xmlns="http://www.sdmx.org/resources/sdmxml/schemas/v2_1/common" xml:lang="en">Pregnancy
995 status</Name>
    <CoreRepresentation xmlns="http://www.sdmx.org/resources/sdmxml/schemas/v2_1/structure">
      <Enumeration xmlns="http://www.sdmx.org/resources/sdmxml/schemas/v2_1/structure">
        <Ref xmlns="" agencyID="IHE_QRPH" version="1.0" id="CL_PREG"/>
      </Enumeration>
1000 </CoreRepresentation>
  </Concept>
  <Concept id="PMTCT_HIV_STATUS">
    <Name xmlns="http://www.sdmx.org/resources/sdmxml/schemas/v2_1/common" xml:lang="en">PMTCT HIV
1005 status</Name>
    <CoreRepresentation xmlns="http://www.sdmx.org/resources/sdmxml/schemas/v2_1/structure">
      <Enumeration xmlns="http://www.sdmx.org/resources/sdmxml/schemas/v2_1/structure">
        <Ref xmlns="" agencyID="IHE_QRPH" version="1.0" id="CL_PMTCT_HIV_STATUS"/>
      </Enumeration>
1010 </CoreRepresentation>
  </Concept>
  <Concept id="PMTCT_ART_STATUS">
    <Name xmlns="http://www.sdmx.org/resources/sdmxml/schemas/v2_1/common" xml:lang="en">PMTCT ART
1015 status</Name>
    <CoreRepresentation xmlns="http://www.sdmx.org/resources/sdmxml/schemas/v2_1/structure">
      <Enumeration xmlns="http://www.sdmx.org/resources/sdmxml/schemas/v2_1/structure">
        <Ref xmlns="" agencyID="IHE_QRPH" version="1.0" id="CL_PMTCT_ART_STATUS"/>
      </Enumeration>
1020 </CoreRepresentation>
  </Concept>
</ConceptScheme>
</str:Concepts>
<str:DataStructures>
  <str:DataStructure id="DSD_ADX_HIV" agencyID="IHE_QRPH" version="1.0">
1025 <com:Name xml:lang="en">{name {ADX for HIV }}</com:Name>
    <str:DataStructureComponents>
      <str:DimensionList>
        <str:Dimension id="dataElement">
          <str:ConceptIdentity>
            <Ref id="dataElement" maintainableParentID="ADX_MANDATORY_CONCEPTS"
1030 maintainableParentVersion="1.0" agencyID="IHE_QRPH"/>
          </str:ConceptIdentity>
          <str:LocalRepresentation>

```

```

1035         <str:Enumeration>
            <Ref agencyID="IHE_QRPH" id="CL_DATAELEMENT" version="1.0"/>
        </str:Enumeration>
    </str:LocalRepresentation>
</str:Dimension>
    <str:Dimension id="orgUnit">
        <str:ConceptIdentity>
1040         <Ref id="orgUnit" maintainableParentID="ADX_MANDATORY_CONCEPTS"
maintainableParentVersion="1.0" agencyID="IHE_QRPH"/>
        </str:ConceptIdentity>
        <str:LocalRepresentation>
1045         <str:Enumeration>
            <Ref agencyID="IHE_QRPH" id="CL_ORGUNIT" version="1.0"/>
        </str:Enumeration>
        </str:LocalRepresentation>
    </str:Dimension>
1050 <str:Dimension xmlns:str="http://www.sdmx.org/resources/sdmxml/schemas/v2_1/structure"
id="AGE_GROUP">
        <str:ConceptIdentity>
            <Ref id="AGE_GROUP" maintainableParentID="IHE_QRPH_CONCEPTS"
maintainableParentVersion="1.0" agencyID="IHE_QRPH"/>
        </str:ConceptIdentity>
1055 </str:Dimension>
    <str:Dimension xmlns:str="http://www.sdmx.org/resources/sdmxml/schemas/v2_1/structure"
id="SEX">
        <str:ConceptIdentity>
1060         <Ref id="SEX" maintainableParentID="IHE_QRPH_CONCEPTS" maintainableParentVersion="1.0"
agencyID="IHE_QRPH"/>
        </str:ConceptIdentity>
    </str:Dimension>
    <str:Dimension xmlns:str="http://www.sdmx.org/resources/sdmxml/schemas/v2_1/structure"
1065 id="HIV_TEST_RESULTS">
        <str:ConceptIdentity>
            <Ref id="HIV_TEST_RESULTS" maintainableParentID="IHE_QRPH_CONCEPTS"
maintainableParentVersion="1.0" agencyID="IHE_QRPH"/>
        </str:ConceptIdentity>
1070 </str:Dimension>
    <str:Dimension xmlns:str="http://www.sdmx.org/resources/sdmxml/schemas/v2_1/structure" id="BF">
        <str:ConceptIdentity>
            <Ref id="BF" maintainableParentID="IHE_QRPH_CONCEPTS" maintainableParentVersion="1.0"
agencyID="IHE_QRPH"/>
        </str:ConceptIdentity>

```

```

1075         </str:Dimension>
         <str:Dimension xmlns:str="http://www.sdmx.org/resources/sdmxml/schemas/v2_1/structure"
id="PREG">
           <str:ConceptIdentity>
1080             <Ref id="PREG" maintainableParentID="IHE_QRPH_CONCEPTS" maintainableParentVersion="1.0"
agencyID="IHE_QRPH"/>
           </str:ConceptIdentity>
         </str:Dimension>
         <str:Dimension xmlns:str="http://www.sdmx.org/resources/sdmxml/schemas/v2_1/structure"
1085 id="PMTCT_HIV_STATUS">
           <str:ConceptIdentity>
             <Ref id="PMTCT_HIV_STATUS" maintainableParentID="IHE_QRPH_CONCEPTS"
maintainableParentVersion="1.0" agencyID="IHE_QRPH"/>
           </str:ConceptIdentity>
         </str:Dimension>
1090         <str:Dimension xmlns:str="http://www.sdmx.org/resources/sdmxml/schemas/v2_1/structure"
id="PMTCT_ART_STATUS">
           <str:ConceptIdentity>
             <Ref id="PMTCT_ART_STATUS" maintainableParentID="IHE_QRPH_CONCEPTS"
maintainableParentVersion="1.0" agencyID="IHE_QRPH"/>
1095           </str:ConceptIdentity>
         </str:Dimension>
         <str:TimeDimension id="TIME_PERIOD">
           <str:ConceptIdentity>
1100             <Ref id="period" maintainableParentID="ADX_MANDATORY_CONCEPTS"
maintainableParentVersion="1.0" agencyID="IHE_QRPH"/>
           </str:ConceptIdentity>
           <str:LocalRepresentation>
             <str:TextFormat textType="TimeRange"/>
           </str:LocalRepresentation>
1105         </str:TimeDimension>
         </str:DimensionList>
         <!-- These dimensions are identified as being used as outer dimensions
of the data. They must include orgUnit and period. -->
         <str:Group id="OUTER_DIMENSIONS">
1110           <str:GroupDimension>
             <str:DimensionReference>
               <Ref id="orgUnit"/>
             </str:DimensionReference>
           </str:GroupDimension>
1115           <str:GroupDimension>
             <str:DimensionReference>

```



```

1120         <Ref id="TIME_PERIOD"/>
           </str:DimensionReference>
         </str:GroupDimension>
       </str:Group>
       <!-- ADX requires that there be a primary measure which is linked to
the value concept. -->
       <str:MeasureList>
         <str:PrimaryMeasure>
1125           <str:ConceptIdentity>
             <Ref id="value" maintainableParentID="ADX_MANDATORY_CONCEPTS"
maintainableParentVersion="1.0" agencyID="IHE"/>
             </str:ConceptIdentity>
           </str:PrimaryMeasure>
1130         </str:MeasureList>
       </str:DataStructureComponents>
     </str:DataStructure>
   </str>DataStructures>
 </mes:Structures>
1135 </mes:Structure>

```

Appendix 8B – (Informative) Generated ADX-HIV data schema

An electronic copy of the file is available at ftp://ftp.ihe.net/TF_Implementation_Material/QRPH/ADX-HIV/adx-hiv_w3cschema.xsd. In case of any difference between the electronic copy and the appendix below, this appendix SHALL be considered normative.

```

1140 <xs:schema xmlns="urn:ihe:qrph:adx:2015" xmlns:common="http://www.sdmx.org/resources/sdmxml/schemas/v2_1/common"
      xmlns:str="http://www.sdmx.org/resources/sdmxml/schemas/v2_1/structure"
      xmlns:com="http://www.sdmx.org/resources/sdmxml/schemas/v2_1/common" xmlns:xs="http://www.w3.org/2001/XMLSchema"
      targetNamespace="urn:ihe:qrph:adx:2015" elementFormDefault="qualified">
1145   <xs:annotation>
      <xs:documentation> This is an example of a tightly constrained schema which should
                          validate an adx data document which has been formed in compliance with the
                          sample SDMX DSD. </xs:documentation>
    </xs:annotation>
1150   <xs:import namespace="http://www.sdmx.org/resources/sdmxml/schemas/v2_1/common"
      schemaLocation="sdmx/SDMXCommon.xsd"/>
      <xs:simpleType name="CL_ORGUNIT_IHE_QRPH_1.0_Type">
        <xs:restriction base="xs:token">
          <!-- The enumeration value will be defined by jurisdictions using ADX-HIV artifacts -->
          <xs:enumeration value="ORGUNIT_CODE"/>
1155        </xs:restriction>
      </xs:simpleType>
      <xs:simpleType name="CL_DATAELEMENT_IHE_QRPH_1.0_Type">
        <xs:restriction base="xs:token">
1160          <xs:enumeration value="QRPH_ADX_MTCT2_D"/>
          <xs:enumeration value="QRPH_ADX_MTCT1_N"/>
          <xs:enumeration value="QRPH_ADX_ART1_N_PREG_BF"/>
          <xs:enumeration value="QRPH_ADX_ART5_D"/>
          <xs:enumeration value="QRPH_ADX_ART1_N"/>
1165          <xs:enumeration value="QRPH_ADX_ART1_N_BF"/>
          <xs:enumeration value="QRPH_ADX_ART3_N"/>
          <xs:enumeration value="QRPH_ADX_ART5_N_BF"/>
          <xs:enumeration value="QRPH_ADX_MTCT2_N"/>
          <xs:enumeration value="QRPH_ADX_VLS3_D"/>
          <xs:enumeration value="QRPH_ADX_VLS3_N"/>
1170          <xs:enumeration value="QRPH_ADX_MTCT1_D"/>
          <xs:enumeration value="QRPH_ADX_ART5_N_PREG_BF"/>
          <xs:enumeration value="QRPH_ADX_ART5_N"/>
          <xs:enumeration value="QRPH_ADX_HTS2_N"/>
        </xs:restriction>

```

```
1175 </xs:simpleType>
1176 <xs:simpleType name="CL_PREG_IHE_QRPH_1.0_Type">
1177   <xs:restriction base="xs:token">
1178     <xs:enumeration value="146789000"/>
1179   </xs:restriction>
1180 </xs:simpleType>
1181 <xs:simpleType name="CL_HIV_TEST_RESULTS_IHE_QRPH_1.0_Type">
1182   <xs:restriction base="xs:token">
1183     <xs:enumeration value="165815009"/>
1184     <xs:enumeration value="165816005"/>
1185   </xs:restriction>
1186 </xs:simpleType>
1187 <xs:simpleType name="CL_SEX_IHE_QRPH_1.0_Type">
1188   <xs:restriction base="xs:token">
1189     <xs:enumeration value="F"/>
1190     <xs:enumeration value="M"/>
1191   </xs:restriction>
1192 </xs:simpleType>
1193 <xs:simpleType name="CL_BF_IHE_QRPH_1.0_Type">
1194   <xs:restriction base="xs:token">
1195     <xs:enumeration value="169750002"/>
1196   </xs:restriction>
1197 </xs:simpleType>
1198 <xs:simpleType name="CL_PMTCT_HIV_STATUS_IHE_QRPH_1.0_Type">
1199   <xs:restriction base="xs:token">
1200     <xs:enumeration value="165816005**"/>
1201     <xs:enumeration value="165816005*"/>
1202     <xs:enumeration value="165815009*"/>
1203   </xs:restriction>
1204 </xs:simpleType>
1205 <xs:simpleType name="CL_AGE_GROUP_IHE_QRPH_1.0_Type">
1206   <xs:restriction base="xs:token">
1207     <xs:enumeration value="P0Y--P1Y"/>
1208     <xs:enumeration value="P1Y--P5Y"/>
1209     <xs:enumeration value="P5Y--P10Y"/>
1210     <xs:enumeration value="P10Y--P15Y"/>
1211     <xs:enumeration value="P15Y--P20Y"/>
1212     <xs:enumeration value="P20Y--P25Y "/>
1213     <xs:enumeration value="P25Y--P30Y"/>
1214     <xs:enumeration value="P30Y--P35Y"/>
1215     <xs:enumeration value="P35Y--P40Y"/>
1216     <xs:enumeration value="P40Y--P45Y"/>
```

```
1220     <xs:enumeration value="P45Y--P50Y"/>
        <xs:enumeration value="P50Y--P9999Y"/>
    </xs:restriction>
</xs:simpleType>
<xs:simpleType name="CL_PMTCT_ART_STATUS_IHE_QRPH_1.0_Type">
    <xs:restriction base="xs:token">
        <xs:enumeration value="432101000124108"/>
        <xs:enumeration value="432101000124108*"/>
    </xs:restriction>
1225 </xs:simpleType>
<xs:simpleType name="periodType">
    <xs:restriction base="common:TimeRangeType"/>
</xs:simpleType>
1230 <xs:complexType name="adxType">
    <xs:sequence maxOccurs="unbounded">
        <xs:element name="group" type="groupType"/>
    </xs:sequence>
    <xs:attribute name="exported" use="required" type="xs:dateTime"/>
1235 <xs:anyAttribute processContents="skip"/>
</xs:complexType>
<xs:complexType name="groupType">
    <xs:sequence maxOccurs="unbounded">
        <xs:element name="dataValue" type="DataValueType"/>
1240 </xs:sequence>
    <xs:attribute name="dataSet" use="required" type="xs:string" fixed="DSD_ADX_HIV"/>
    <xs:attribute name="orgUnit" use="required" type="CL_ORGUNIT_IHE_QRPH_1.0_Type"/>
    <xs:attribute name="period" use="required" type="periodType"/>
    <xs:anyAttribute processContents="skip"/>
1245 </xs:complexType>
<xs:complexType name="DataValueType">
    <xs:sequence maxOccurs="1" minOccurs="0">
        <xs:element name="annotation"/>
    </xs:sequence>
1250 <xs:attribute name="dataElement" use="required" type="CL_DATAELEMENT_IHE_QRPH_1.0_Type"/>
    <xs:attribute name="value" use="required" type="xs:decimal"/>
    <xs:attribute name="PMTCT_HIV_STATUS" type="CL_PMTCT_HIV_STATUS_IHE_QRPH_1.0_Type" use="optional"/>
    <xs:attribute name="PREG" type="CL_PREG_IHE_QRPH_1.0_Type" use="optional"/>
    <xs:attribute name="AGE_GROUP" type="CL_AGE_GROUP_IHE_QRPH_1.0_Type" use="optional"/>
1255 <xs:attribute name="SEX" type="CL_SEX_IHE_QRPH_1.0_Type" use="optional"/>
    <xs:attribute name="BF" type="CL_BF_IHE_QRPH_1.0_Type" use="optional"/>
    <xs:attribute name="PMTCT_ART_STATUS" type="CL_PMTCT_ART_STATUS_IHE_QRPH_1.0_Type" use="optional"/>
    <xs:attribute name="HIV_TEST_RESULTS" type="CL_HIV_TEST_RESULTS_IHE_QRPH_1.0_Type" use="optional"/>
```

1260

```
        <xs:anyAttribute processContents="skip"/>
    </xs:complexType>
    <xs:element name="adx" type="adxType"/>
</xs:schema>
```

Appendix 8C – (Informative) Generated ADX-HIV schema for validating disaggregation

1265 An electronic copy of the file is available at ftp://ftp.ihe.net/TF_Implementation_Material/QRPH/ADX-HIV/adx-hiv_schematron.sch.
In case of any difference between the electronic copy and the appendix below, this appendix SHALL be considered normative.

```

1270 <sch:schema xmlns:str="http://www.sdmx.org/resources/sdmxml/schemas/v2_1/structure"
      xmlns:com="http://www.sdmx.org/resources/sdmxml/schemas/v2_1/common" xmlns:sch="http://purl.oclc.org/dsdl/schematron">
      <sch:ns uri="urn:ihe:qrph:adx:2015" prefix="adx"/>
      <sch:pattern>
        <sch:title>Validating ADX aggregations</sch:title>
        <sch:p> The ADX xsd schema validates that correct codes are used in code lists. Applying
1275         this set of rules in addition ensures that datavalues are reported with the correct
        disaggregations. </sch:p>
        <sch:rule context="adx:dataValue[@dataElement='QRPH_ADX_HTS2_N']">
          <sch:assert test="@AGE_GROUP">@AGE_GROUP must be present on element QRPH_ADX_HTS2_N</sch:assert>
          <sch:assert test="@SEX">@SEX must be present on element QRPH_ADX_HTS2_N</sch:assert>
1280          <sch:assert test="@HIV_TEST_RESULTS">@HIV_TEST_RESULTS must be present on element
          QRPH_ADX_HTS2_N</sch:assert>
          <sch:assert test="not(@BF)">@BF is not permitted on element QRPH_ADX_HTS2_N</sch:assert>
          <sch:assert test="not(@PMTCT_HIV_STATUS)">@PMTCT_HIV_STATUS is not permitted on element
1285          QRPH_ADX_HTS2_N</sch:assert>
          <sch:assert test="not(@PREG)">@PREG is not permitted on element QRPH_ADX_HTS2_N</sch:assert>
          <sch:assert test="not(@PMTCT_ART_STATUS)">@PMTCT_ART_STATUS is not permitted on element
          QRPH_ADX_HTS2_N</sch:assert>
          </sch:rule>
          <sch:rule context="adx:dataValue[@dataElement='QRPH_ADX_ART1_N_BF']">
1290          <sch:assert test="not(@AGE_GROUP)">@AGE_GROUP is not permitted on element QRPH_ADX_ART1_N_BF</sch:assert>
          <sch:assert test="not(@SEX)">@SEX is not permitted on element QRPH_ADX_ART1_N_BF</sch:assert>
          <sch:assert test="not(@HIV_TEST_RESULTS)">@HIV_TEST_RESULTS is not permitted on element
          QRPH_ADX_ART1_N_BF</sch:assert>
          <sch:assert test="@BF">@BF must be present on element QRPH_ADX_ART1_N_BF</sch:assert>
1295          <sch:assert test="not(@PMTCT_HIV_STATUS)">@PMTCT_HIV_STATUS is not permitted on element
          QRPH_ADX_ART1_N_BF</sch:assert>
          <sch:assert test="not(@PREG)">@PREG is not permitted on element QRPH_ADX_ART1_N_BF</sch:assert>
          <sch:assert test="not(@PMTCT_ART_STATUS)">@PMTCT_ART_STATUS is not permitted on element
          QRPH_ADX_ART1_N_BF</sch:assert>
          </sch:rule>
1300          <sch:rule context="adx:dataValue[@dataElement='QRPH_ADX_MTCT1_D']">
          <sch:assert test="not(@AGE_GROUP)">@AGE_GROUP is not permitted on element QRPH_ADX_MTCT1_D</sch:assert>
          <sch:assert test="not(@SEX)">@SEX is not permitted on element QRPH_ADX_MTCT1_D</sch:assert>

```

```

1305     <sch:assert test="not(@HIV_TEST_RESULTS)">@HIV_TEST_RESULTS is not permitted on element
QRPH_ADX_MTCT1_D</sch:assert>
     <sch:assert test="not(@BF)">@BF is not permitted on element QRPH_ADX_MTCT1_D</sch:assert>
     <sch:assert test="@PMTCT_HIV_STATUS">@PMTCT_HIV_STATUS must be present on element
QRPH_ADX_MTCT1_D</sch:assert>
     <sch:assert test="not(@PREG)">@PREG is not permitted on element QRPH_ADX_MTCT1_D</sch:assert>
1310     <sch:assert test="not(@PMTCT_ART_STATUS)">@PMTCT_ART_STATUS is not permitted on element
QRPH_ADX_MTCT1_D</sch:assert>
     </sch:rule>
     <sch:rule context="adx:dataValue[@dataElement='QRPH_ADX_VLS3_D']">
     <sch:assert test="@AGE_GROUP">@AGE_GROUP must be present on element QRPH_ADX_VLS3_D</sch:assert>
     <sch:assert test="@SEX">@SEX must be present on element QRPH_ADX_VLS3_D</sch:assert>
1315     <sch:assert test="not(@HIV_TEST_RESULTS)">@HIV_TEST_RESULTS is not permitted on element
QRPH_ADX_VLS3_D</sch:assert>
     <sch:assert test="not(@BF)">@BF is not permitted on element QRPH_ADX_VLS3_D</sch:assert>
     <sch:assert test="not(@PMTCT_HIV_STATUS)">@PMTCT_HIV_STATUS is not permitted on element
QRPH_ADX_VLS3_D</sch:assert>
1320     <sch:assert test="not(@PREG)">@PREG is not permitted on element QRPH_ADX_VLS3_D</sch:assert>
     <sch:assert test="not(@PMTCT_ART_STATUS)">@PMTCT_ART_STATUS is not permitted on element
QRPH_ADX_VLS3_D</sch:assert>
     </sch:rule>
     <sch:rule context="adx:dataValue[@dataElement='QRPH_ADX_ART5_N']">
     <sch:assert test="@AGE_GROUP">@AGE_GROUP must be present on element QRPH_ADX_ART5_N</sch:assert>
     <sch:assert test="@SEX">@SEX must be present on element QRPH_ADX_ART5_N</sch:assert>
     <sch:assert test="not(@HIV_TEST_RESULTS)">@HIV_TEST_RESULTS is not permitted on element
QRPH_ADX_ART5_N</sch:assert>
1325     <sch:assert test="not(@BF)">@BF is not permitted on element QRPH_ADX_ART5_N</sch:assert>
     <sch:assert test="not(@PMTCT_HIV_STATUS)">@PMTCT_HIV_STATUS is not permitted on element
QRPH_ADX_ART5_N</sch:assert>
     <sch:assert test="not(@PREG)">@PREG is not permitted on element QRPH_ADX_ART5_N</sch:assert>
     <sch:assert test="not(@PMTCT_ART_STATUS)">@PMTCT_ART_STATUS is not permitted on element
QRPH_ADX_ART5_N</sch:assert>
1330     </sch:rule>
     <sch:rule context="adx:dataValue[@dataElement='QRPH_ADX_MTCT2_D']">
     <sch:assert test="not(@AGE_GROUP)">@AGE_GROUP is not permitted on element QRPH_ADX_MTCT2_D</sch:assert>
     <sch:assert test="not(@SEX)">@SEX is not permitted on element QRPH_ADX_MTCT2_D</sch:assert>
     <sch:assert test="not(@HIV_TEST_RESULTS)">@HIV_TEST_RESULTS is not permitted on element
QRPH_ADX_MTCT2_D</sch:assert>
1335     <sch:assert test="not(@BF)">@BF is not permitted on element QRPH_ADX_MTCT2_D</sch:assert>
     <sch:assert test="not(@PMTCT_HIV_STATUS)">@PMTCT_HIV_STATUS is not permitted on element
QRPH_ADX_MTCT2_D</sch:assert>
     <sch:assert test="not(@PREG)">@PREG is not permitted on element QRPH_ADX_MTCT2_D</sch:assert>
1340     </sch:rule>

```

```

1345     <sch:assert test="not(@PMTCT_ART_STATUS)">@PMTCT_ART_STATUS is not permitted on element
QRPH_ADX_MTCT2_D</sch:assert>
    </sch:rule>
    <sch:rule context="adx:dataValue[@dataElement='QRPH_ADX_ART3_N']">
1350     <sch:assert test="@AGE_GROUP">@AGE_GROUP must be present on element QRPH_ADX_ART3_N</sch:assert>
    <sch:assert test="@SEX">@SEX must be present on element QRPH_ADX_ART3_N</sch:assert>
    <sch:assert test="not(@HIV_TEST_RESULTS)">@HIV_TEST_RESULTS is not permitted on element
QRPH_ADX_ART3_N</sch:assert>
    <sch:assert test="not(@BF)">@BF is not permitted on element QRPH_ADX_ART3_N</sch:assert>
1355     <sch:assert test="not(@PMTCT_HIV_STATUS)">@PMTCT_HIV_STATUS is not permitted on element
QRPH_ADX_ART3_N</sch:assert>
    <sch:assert test="not(@PREG)">@PREG is not permitted on element QRPH_ADX_ART3_N</sch:assert>
    <sch:assert test="not(@PMTCT_ART_STATUS)">@PMTCT_ART_STATUS is not permitted on element
QRPH_ADX_ART3_N</sch:assert>
    </sch:rule>
1360     <sch:rule context="adx:dataValue[@dataElement='QRPH_ADX_ART1_N']">
    <sch:assert test="@AGE_GROUP">@AGE_GROUP must be present on element QRPH_ADX_ART1_N</sch:assert>
    <sch:assert test="@SEX">@SEX must be present on element QRPH_ADX_ART1_N</sch:assert>
    <sch:assert test="not(@HIV_TEST_RESULTS)">@HIV_TEST_RESULTS is not permitted on element
QRPH_ADX_ART1_N</sch:assert>
1365     <sch:assert test="not(@BF)">@BF is not permitted on element QRPH_ADX_ART1_N</sch:assert>
    <sch:assert test="not(@PMTCT_HIV_STATUS)">@PMTCT_HIV_STATUS is not permitted on element
QRPH_ADX_ART1_N</sch:assert>
    <sch:assert test="not(@PREG)">@PREG is not permitted on element QRPH_ADX_ART1_N</sch:assert>
    <sch:assert test="not(@PMTCT_ART_STATUS)">@PMTCT_ART_STATUS is not permitted on element
1370     QRPH_ADX_ART1_N</sch:assert>
    </sch:rule>
    <sch:rule context="adx:dataValue[@dataElement='QRPH_ADX_ART5_N_BF']">
    <sch:assert test="not(@AGE_GROUP)">@AGE_GROUP is not permitted on element QRPH_ADX_ART5_N_BF</sch:assert>
1375     <sch:assert test="not(@SEX)">@SEX is not permitted on element QRPH_ADX_ART5_N_BF</sch:assert>
    <sch:assert test="not(@HIV_TEST_RESULTS)">@HIV_TEST_RESULTS is not permitted on element
QRPH_ADX_ART5_N_BF</sch:assert>
    <sch:assert test="@BF">@BF must be present on element QRPH_ADX_ART5_N_BF</sch:assert>
    <sch:assert test="not(@PMTCT_HIV_STATUS)">@PMTCT_HIV_STATUS is not permitted on element
QRPH_ADX_ART5_N_BF</sch:assert>
1380     <sch:assert test="not(@PREG)">@PREG is not permitted on element QRPH_ADX_ART5_N_BF</sch:assert>
    <sch:assert test="not(@PMTCT_ART_STATUS)">@PMTCT_ART_STATUS is not permitted on element
QRPH_ADX_ART5_N_BF</sch:assert>
    </sch:rule>
1385     <sch:rule context="adx:dataValue[@dataElement='QRPH_ADX_ART5_D']">
    <sch:assert test="@AGE_GROUP">@AGE_GROUP must be present on element QRPH_ADX_ART5_D</sch:assert>
    <sch:assert test="@SEX">@SEX must be present on element QRPH_ADX_ART5_D</sch:assert>

```



```

1390     <sch:assert test="not(@HIV_TEST_RESULTS)">@HIV_TEST_RESULTS is not permitted on element
QRPH_ADX_ART5_D</sch:assert>
1395     <sch:assert test="not(@BF)">@BF is not permitted on element QRPH_ADX_ART5_D</sch:assert>
1400     <sch:assert test="not(@PMTCT_HIV_STATUS)">@PMTCT_HIV_STATUS is not permitted on element
QRPH_ADX_ART5_D</sch:assert>
1405     <sch:assert test="not(@PREG)">@PREG is not permitted on element QRPH_ADX_ART5_D</sch:assert>
1410     <sch:assert test="not(@PMTCT_ART_STATUS)">@PMTCT_ART_STATUS is not permitted on element
QRPH_ADX_ART5_D</sch:assert>
1415     </sch:rule>
1420     <sch:rule context="adx:dataValue[@dataElement='QRPH_ADX_ART1_N_PREG_BF']">
1425     <sch:assert test="not(@AGE_GROUP)">@AGE_GROUP is not permitted on element
QRPH_ADX_ART1_N_PREG_BF</sch:assert>
1430     <sch:assert test="not(@SEX)">@SEX is not permitted on element QRPH_ADX_ART1_N_PREG_BF</sch:assert>
1435     <sch:assert test="not(@HIV_TEST_RESULTS)">@HIV_TEST_RESULTS is not permitted on element
QRPH_ADX_ART1_N_PREG_BF</sch:assert>
1440     <sch:assert test="not(@BF)">@BF is not permitted on element QRPH_ADX_ART1_N_PREG_BF</sch:assert>
1445     <sch:assert test="not(@PMTCT_HIV_STATUS)">@PMTCT_HIV_STATUS is not permitted on element
QRPH_ADX_ART1_N_PREG_BF</sch:assert>
1450     <sch:assert test="@PREG">@PREG must be present on element QRPH_ADX_ART1_N_PREG_BF</sch:assert>
1455     <sch:assert test="not(@PMTCT_ART_STATUS)">@PMTCT_ART_STATUS is not permitted on element
QRPH_ADX_ART1_N_PREG_BF</sch:assert>
1460     </sch:rule>
1465     <sch:rule context="adx:dataValue[@dataElement='QRPH_ADX_MTCT2_N']">
1470     <sch:assert test="not(@AGE_GROUP)">@AGE_GROUP is not permitted on element QRPH_ADX_MTCT2_N</sch:assert>
1475     <sch:assert test="not(@SEX)">@SEX is not permitted on element QRPH_ADX_MTCT2_N</sch:assert>
1480     <sch:assert test="not(@HIV_TEST_RESULTS)">@HIV_TEST_RESULTS is not permitted on element
QRPH_ADX_MTCT2_N</sch:assert>
1485     <sch:assert test="not(@BF)">@BF is not permitted on element QRPH_ADX_MTCT2_N</sch:assert>
1490     <sch:assert test="not(@PMTCT_HIV_STATUS)">@PMTCT_HIV_STATUS is not permitted on element
QRPH_ADX_MTCT2_N</sch:assert>
1495     <sch:assert test="not(@PREG)">@PREG is not permitted on element QRPH_ADX_MTCT2_N</sch:assert>
1500     <sch:assert test="@PMTCT_ART_STATUS">@PMTCT_ART_STATUS must be present on element
QRPH_ADX_MTCT2_N</sch:assert>
1505     </sch:rule>
1510     <sch:rule context="adx:dataValue[@dataElement='QRPH_ADX_MTCT1_N']">
1515     <sch:assert test="not(@AGE_GROUP)">@AGE_GROUP is not permitted on element QRPH_ADX_MTCT1_N</sch:assert>
1520     <sch:assert test="not(@SEX)">@SEX is not permitted on element QRPH_ADX_MTCT1_N</sch:assert>
1525     <sch:assert test="not(@HIV_TEST_RESULTS)">@HIV_TEST_RESULTS is not permitted on element
QRPH_ADX_MTCT1_N</sch:assert>
1530     <sch:assert test="not(@BF)">@BF is not permitted on element QRPH_ADX_MTCT1_N</sch:assert>
1535     <sch:assert test="@PMTCT_HIV_STATUS">@PMTCT_HIV_STATUS must be present on element
QRPH_ADX_MTCT1_N</sch:assert>

```

```

1430     <sch:assert test="not(@PREG)">@PREG is not permitted on element QRPH_ADX_MTCT1_N</sch:assert>
        <sch:assert test="not(@PMTCT_ART_STATUS)">@PMTCT_ART_STATUS is not permitted on element
QRPH_ADX_MTCT1_N</sch:assert>
        </sch:rule>
        <sch:rule context="adx:dataValue[@dataElement='QRPH_ADX_VLS3_N']">
1435     <sch:assert test="@AGE_GROUP">@AGE_GROUP must be present on element QRPH_ADX_VLS3_N</sch:assert>
        <sch:assert test="@SEX">@SEX must be present on element QRPH_ADX_VLS3_N</sch:assert>
        <sch:assert test="not(@HIV_TEST_RESULTS)">@HIV_TEST_RESULTS is not permitted on element
QRPH_ADX_VLS3_N</sch:assert>
        <sch:assert test="not(@BF)">@BF is not permitted on element QRPH_ADX_VLS3_N</sch:assert>
1440     <sch:assert test="not(@PMTCT_HIV_STATUS)">@PMTCT_HIV_STATUS is not permitted on element
QRPH_ADX_VLS3_N</sch:assert>
        <sch:assert test="not(@PREG)">@PREG is not permitted on element QRPH_ADX_VLS3_N</sch:assert>
        <sch:assert test="not(@PMTCT_ART_STATUS)">@PMTCT_ART_STATUS is not permitted on element
QRPH_ADX_VLS3_N</sch:assert>
        </sch:rule>
1445     <sch:rule context="adx:dataValue[@dataElement='QRPH_ADX_ART5_N_PREG_BF']">
        <sch:assert test="not(@AGE_GROUP)">@AGE_GROUP is not permitted on element
QRPH_ADX_ART5_N_PREG_BF</sch:assert>
        <sch:assert test="not(@SEX)">@SEX is not permitted on element QRPH_ADX_ART5_N_PREG_BF</sch:assert>
1450     <sch:assert test="not(@HIV_TEST_RESULTS)">@HIV_TEST_RESULTS is not permitted on element
QRPH_ADX_ART5_N_PREG_BF</sch:assert>
        <sch:assert test="not(@BF)">@BF is not permitted on element QRPH_ADX_ART5_N_PREG_BF</sch:assert>
        <sch:assert test="not(@PMTCT_HIV_STATUS)">@PMTCT_HIV_STATUS is not permitted on element
QRPH_ADX_ART5_N_PREG_BF</sch:assert>
        <sch:assert test="@PREG">@PREG must be present on element QRPH_ADX_ART5_N_PREG_BF</sch:assert>
1455     <sch:assert test="not(@PMTCT_ART_STATUS)">@PMTCT_ART_STATUS is not permitted on element
QRPH_ADX_ART5_N_PREG_BF</sch:assert>
        </sch:rule>
    </sch:pattern>
</sch:schema>

```

1460

Appendix 8D – (Informative) ADX-HIV Sample data

An electronic copy of the file is available at ftp://ftp.ihe.net/TF_Implementation_Material/QRPH/ADX-HIV/adx-hiv_data_sample.xml. In case of any difference between the electronic copy and the appendix below, this appendix SHALL be considered normative

```

1465 <adx xmlns='urn:ihe:qrph:adx:2015' xmlns:xsi='http://www.w3.org/2001/XMLSchema-instance'>
      <group orgUnit='ZW01' period='2017-01-01/P1M'>
        <dataValue dataElement='QRPH_ADX_ART1_N' AGE_GROUP='P0Y--P1Y' SEX='F' value='0' />
        <dataValue dataElement='QRPH_ADX_ART1_N' AGE_GROUP='P0Y--P1Y' SEX='M' value='0' />
1470 <dataValue dataElement='QRPH_ADX_ART1_N' AGE_GROUP='P1Y--P5Y' SEX='F' value='0' />
        <dataValue dataElement='QRPH_ADX_ART1_N' AGE_GROUP='P1Y--P5Y' SEX='M' value='0' />
        <dataValue dataElement='QRPH_ADX_ART1_N' AGE_GROUP='P5Y--P10Y' SEX='F' value='0' />
        <dataValue dataElement='QRPH_ADX_ART1_N' AGE_GROUP='P5Y--P10Y' SEX='M' value='0' />
        <dataValue dataElement='QRPH_ADX_ART1_N' AGE_GROUP='P10Y--P15Y' SEX='F' value='0' />
        <dataValue dataElement='QRPH_ADX_ART1_N' AGE_GROUP='P10Y--P15Y' SEX='M' value='0' />
1475 <dataValue dataElement='QRPH_ADX_ART1_N' AGE_GROUP='P15Y--P20Y' SEX='F' value='0' />
        <dataValue dataElement='QRPH_ADX_ART1_N' AGE_GROUP='P15Y--P20Y' SEX='M' value='0' />
        <dataValue dataElement='QRPH_ADX_ART1_N' AGE_GROUP='P20Y--P25Y' SEX='F' value='0' />
        <dataValue dataElement='QRPH_ADX_ART1_N' AGE_GROUP='P20Y--P25Y' SEX='M' value='0' />
        <dataValue dataElement='QRPH_ADX_ART1_N' AGE_GROUP='P25Y--P30Y' SEX='F' value='0' />
1480 <dataValue dataElement='QRPH_ADX_ART1_N' AGE_GROUP='P25Y--P30Y' SEX='M' value='0' />
        <dataValue dataElement='QRPH_ADX_ART1_N' AGE_GROUP='P30Y--P35Y' SEX='F' value='0' />
        <dataValue dataElement='QRPH_ADX_ART1_N' AGE_GROUP='P30Y--P35Y' SEX='M' value='0' />
        <dataValue dataElement='QRPH_ADX_ART1_N' AGE_GROUP='P35Y--P40Y' SEX='F' value='0' />
        <dataValue dataElement='QRPH_ADX_ART1_N' AGE_GROUP='P35Y--P40Y' SEX='M' value='0' />
1485 <dataValue dataElement='QRPH_ADX_ART1_N' AGE_GROUP='P40Y--P45Y' SEX='F' value='0' />
        <dataValue dataElement='QRPH_ADX_ART1_N' AGE_GROUP='P40Y--P45Y' SEX='M' value='0' />
        <dataValue dataElement='QRPH_ADX_ART1_N' AGE_GROUP='P45Y--P50Y' SEX='F' value='0' />
        <dataValue dataElement='QRPH_ADX_ART1_N' AGE_GROUP='P45Y--P50Y' SEX='M' value='0' />
        <dataValue dataElement='QRPH_ADX_ART1_N' AGE_GROUP='P50Y--P9999Y' SEX='F' value='0' />
1490 <dataValue dataElement='QRPH_ADX_ART1_N' AGE_GROUP='P50Y--P9999Y' SEX='M' value='0' />
        <dataValue dataElement='QRPH_ADX_ART1_N_BF' BF='169750002' value='0' />
        <dataValue dataElement='QRPH_ADX_ART1_N_PREG_BF' PREG='146789000' value='0' />
        <dataValue dataElement='QRPH_ADX_ART3_N' AGE_GROUP='P0Y--P1Y' SEX='F' value='0' />
        <dataValue dataElement='QRPH_ADX_ART3_N' AGE_GROUP='P0Y--P1Y' SEX='M' value='0' />
1495 <dataValue dataElement='QRPH_ADX_ART3_N' AGE_GROUP='P1Y--P5Y' SEX='F' value='0' />
        <dataValue dataElement='QRPH_ADX_ART3_N' AGE_GROUP='P1Y--P5Y' SEX='M' value='0' />
        <dataValue dataElement='QRPH_ADX_ART3_N' AGE_GROUP='P5Y--P10Y' SEX='F' value='0' />
        <dataValue dataElement='QRPH_ADX_ART3_N' AGE_GROUP='P5Y--P10Y' SEX='M' value='0' />
        <dataValue dataElement='QRPH_ADX_ART3_N' AGE_GROUP='P10Y--P15Y' SEX='F' value='0' />
1500 <dataValue dataElement='QRPH_ADX_ART3_N' AGE_GROUP='P10Y--P15Y' SEX='M' value='0' />

```

```

1505 <dataValue dataElement='QRPH_ADX_ART3_N' AGE_GROUP='P15Y--P20Y' SEX='F' value='0'/>
      <dataValue dataElement='QRPH_ADX_ART3_N' AGE_GROUP='P15Y--P20Y' SEX='M' value='0'/>
      <dataValue dataElement='QRPH_ADX_ART3_N' AGE_GROUP='P20Y--P25Y' SEX='F' value='0'/>
      <dataValue dataElement='QRPH_ADX_ART3_N' AGE_GROUP='P20Y--P25Y' SEX='M' value='0'/>
      <dataValue dataElement='QRPH_ADX_ART3_N' AGE_GROUP='P25Y--P30Y' SEX='F' value='0'/>
      <dataValue dataElement='QRPH_ADX_ART3_N' AGE_GROUP='P25Y--P30Y' SEX='M' value='0'/>
      <dataValue dataElement='QRPH_ADX_ART3_N' AGE_GROUP='P30Y--P35Y' SEX='F' value='0'/>
      <dataValue dataElement='QRPH_ADX_ART3_N' AGE_GROUP='P30Y--P35Y' SEX='M' value='0'/>
1510 <dataValue dataElement='QRPH_ADX_ART3_N' AGE_GROUP='P35Y--P40Y' SEX='F' value='0'/>
      <dataValue dataElement='QRPH_ADX_ART3_N' AGE_GROUP='P35Y--P40Y' SEX='M' value='0'/>
      <dataValue dataElement='QRPH_ADX_ART3_N' AGE_GROUP='P40Y--P45Y' SEX='F' value='0'/>
      <dataValue dataElement='QRPH_ADX_ART3_N' AGE_GROUP='P40Y--P45Y' SEX='M' value='0'/>
      <dataValue dataElement='QRPH_ADX_ART3_N' AGE_GROUP='P45Y--P50Y' SEX='F' value='0'/>
      <dataValue dataElement='QRPH_ADX_ART3_N' AGE_GROUP='P45Y--P50Y' SEX='M' value='0'/>
1515 <dataValue dataElement='QRPH_ADX_ART3_N' AGE_GROUP='P50Y--P9999Y' SEX='F' value='0'/>
      <dataValue dataElement='QRPH_ADX_ART3_N' AGE_GROUP='P50Y--P9999Y' SEX='M' value='0'/>
      <dataValue dataElement='QRPH_ADX_ART5_D' AGE_GROUP='P0Y--P1Y' SEX='F' value='0'/>
      <dataValue dataElement='QRPH_ADX_ART5_D' AGE_GROUP='P0Y--P1Y' SEX='M' value='0'/>
1520 <dataValue dataElement='QRPH_ADX_ART5_D' AGE_GROUP='P1Y--P5Y' SEX='F' value='0'/>
      <dataValue dataElement='QRPH_ADX_ART5_D' AGE_GROUP='P1Y--P5Y' SEX='M' value='0'/>
      <dataValue dataElement='QRPH_ADX_ART5_D' AGE_GROUP='P5Y--P10Y' SEX='F' value='0'/>
      <dataValue dataElement='QRPH_ADX_ART5_D' AGE_GROUP='P5Y--P10Y' SEX='M' value='0'/>
      <dataValue dataElement='QRPH_ADX_ART5_D' AGE_GROUP='P10Y--P15Y' SEX='F' value='0'/>
      <dataValue dataElement='QRPH_ADX_ART5_D' AGE_GROUP='P10Y--P15Y' SEX='M' value='0'/>
1525 <dataValue dataElement='QRPH_ADX_ART5_D' AGE_GROUP='P15Y--P20Y' SEX='F' value='0'/>
      <dataValue dataElement='QRPH_ADX_ART5_D' AGE_GROUP='P15Y--P20Y' SEX='M' value='0'/>
      <dataValue dataElement='QRPH_ADX_ART5_D' AGE_GROUP='P20Y--P25Y' SEX='F' value='0'/>
      <dataValue dataElement='QRPH_ADX_ART5_D' AGE_GROUP='P20Y--P25Y' SEX='M' value='0'/>
      <dataValue dataElement='QRPH_ADX_ART5_D' AGE_GROUP='P25Y--P30Y' SEX='F' value='0'/>
      <dataValue dataElement='QRPH_ADX_ART5_D' AGE_GROUP='P25Y--P30Y' SEX='M' value='0'/>
1530 <dataValue dataElement='QRPH_ADX_ART5_D' AGE_GROUP='P30Y--P35Y' SEX='F' value='0'/>
      <dataValue dataElement='QRPH_ADX_ART5_D' AGE_GROUP='P30Y--P35Y' SEX='M' value='0'/>
      <dataValue dataElement='QRPH_ADX_ART5_D' AGE_GROUP='P35Y--P40Y' SEX='F' value='0'/>
      <dataValue dataElement='QRPH_ADX_ART5_D' AGE_GROUP='P35Y--P40Y' SEX='M' value='0'/>
1535 <dataValue dataElement='QRPH_ADX_ART5_D' AGE_GROUP='P40Y--P45Y' SEX='F' value='0'/>
      <dataValue dataElement='QRPH_ADX_ART5_D' AGE_GROUP='P40Y--P45Y' SEX='M' value='0'/>
      <dataValue dataElement='QRPH_ADX_ART5_D' AGE_GROUP='P45Y--P50Y' SEX='F' value='0'/>
      <dataValue dataElement='QRPH_ADX_ART5_D' AGE_GROUP='P45Y--P50Y' SEX='M' value='0'/>
1540 <dataValue dataElement='QRPH_ADX_ART5_D' AGE_GROUP='P50Y--P9999Y' SEX='F' value='0'/>
      <dataValue dataElement='QRPH_ADX_ART5_D' AGE_GROUP='P50Y--P9999Y' SEX='M' value='0'/>
      <dataValue dataElement='QRPH_ADX_ART5_N' AGE_GROUP='P0Y--P1Y' SEX='F' value='0'/>
      <dataValue dataElement='QRPH_ADX_ART5_N' AGE_GROUP='P0Y--P1Y' SEX='M' value='0'/>

```

IHE Quality, Research and Public Health Technical Framework Supplement – Aggregate Data Exchange-HIV (ADX-HIV)

```

1545 <dataValue dataElement='QRPH_ADX_ART5_N' AGE_GROUP='P1Y--P5Y' SEX='F' value='0' />
      <dataValue dataElement='QRPH_ADX_ART5_N' AGE_GROUP='P1Y--P5Y' SEX='M' value='0' />
      <dataValue dataElement='QRPH_ADX_ART5_N' AGE_GROUP='P5Y--P10Y' SEX='F' value='0' />
      <dataValue dataElement='QRPH_ADX_ART5_N' AGE_GROUP='P5Y--P10Y' SEX='M' value='0' />
      <dataValue dataElement='QRPH_ADX_ART5_N' AGE_GROUP='P10Y--P15Y' SEX='F' value='0' />
      <dataValue dataElement='QRPH_ADX_ART5_N' AGE_GROUP='P10Y--P15Y' SEX='M' value='0' />
1550 <dataValue dataElement='QRPH_ADX_ART5_N' AGE_GROUP='P15Y--P20Y' SEX='F' value='0' />
      <dataValue dataElement='QRPH_ADX_ART5_N' AGE_GROUP='P15Y--P20Y' SEX='M' value='0' />
      <dataValue dataElement='QRPH_ADX_ART5_N' AGE_GROUP='P20Y--P25Y' SEX='F' value='0' />
      <dataValue dataElement='QRPH_ADX_ART5_N' AGE_GROUP='P20Y--P25Y' SEX='M' value='0' />
      <dataValue dataElement='QRPH_ADX_ART5_N' AGE_GROUP='P25Y--P30Y' SEX='F' value='0' />
      <dataValue dataElement='QRPH_ADX_ART5_N' AGE_GROUP='P25Y--P30Y' SEX='M' value='0' />
1555 <dataValue dataElement='QRPH_ADX_ART5_N' AGE_GROUP='P30Y--P35Y' SEX='F' value='0' />
      <dataValue dataElement='QRPH_ADX_ART5_N' AGE_GROUP='P30Y--P35Y' SEX='M' value='0' />
      <dataValue dataElement='QRPH_ADX_ART5_N' AGE_GROUP='P35Y--P40Y' SEX='F' value='0' />
      <dataValue dataElement='QRPH_ADX_ART5_N' AGE_GROUP='P35Y--P40Y' SEX='M' value='0' />
      <dataValue dataElement='QRPH_ADX_ART5_N' AGE_GROUP='P40Y--P45Y' SEX='F' value='0' />
      <dataValue dataElement='QRPH_ADX_ART5_N' AGE_GROUP='P40Y--P45Y' SEX='M' value='0' />
1560 <dataValue dataElement='QRPH_ADX_ART5_N' AGE_GROUP='P45Y--P50Y' SEX='F' value='0' />
      <dataValue dataElement='QRPH_ADX_ART5_N' AGE_GROUP='P45Y--P50Y' SEX='M' value='0' />
      <dataValue dataElement='QRPH_ADX_ART5_N' AGE_GROUP='P50Y--P9999Y' SEX='F' value='0' />
      <dataValue dataElement='QRPH_ADX_ART5_N' AGE_GROUP='P50Y--P9999Y' SEX='M' value='0' />
1565 <dataValue dataElement='QRPH_ADX_ART5_N_BF' BF='169750002' value='0' />
      <dataValue dataElement='QRPH_ADX_ART5_N_PREG_BF' PREG='146789000' value='0' />
      <dataValue dataElement='QRPH_ADX_HTS2_N' AGE_GROUP='P0Y--P1Y' SEX='F' HIV_TEST_RESULTS='165815009' value='0' />
      <dataValue dataElement='QRPH_ADX_HTS2_N' AGE_GROUP='P0Y--P1Y' SEX='F' HIV_TEST_RESULTS='165816005' value='0' />
      <dataValue dataElement='QRPH_ADX_HTS2_N' AGE_GROUP='P0Y--P1Y' SEX='M' HIV_TEST_RESULTS='165815009' value='0' />
1570 <dataValue dataElement='QRPH_ADX_HTS2_N' AGE_GROUP='P0Y--P1Y' SEX='M' HIV_TEST_RESULTS='165816005' value='0' />
      <dataValue dataElement='QRPH_ADX_HTS2_N' AGE_GROUP='P1Y--P5Y' SEX='F' HIV_TEST_RESULTS='165815009' value='0' />
      <dataValue dataElement='QRPH_ADX_HTS2_N' AGE_GROUP='P1Y--P5Y' SEX='F' HIV_TEST_RESULTS='165816005' value='0' />
      <dataValue dataElement='QRPH_ADX_HTS2_N' AGE_GROUP='P1Y--P5Y' SEX='M' HIV_TEST_RESULTS='165815009' value='0' />
      <dataValue dataElement='QRPH_ADX_HTS2_N' AGE_GROUP='P1Y--P5Y' SEX='M' HIV_TEST_RESULTS='165816005' value='0' />
1575 <dataValue dataElement='QRPH_ADX_HTS2_N' AGE_GROUP='P5Y--P10Y' SEX='F' HIV_TEST_RESULTS='165815009' value='0' />
      <dataValue dataElement='QRPH_ADX_HTS2_N' AGE_GROUP='P5Y--P10Y' SEX='F' HIV_TEST_RESULTS='165816005' value='0' />
      <dataValue dataElement='QRPH_ADX_HTS2_N' AGE_GROUP='P5Y--P10Y' SEX='M' HIV_TEST_RESULTS='165815009' value='0' />
      <dataValue dataElement='QRPH_ADX_HTS2_N' AGE_GROUP='P5Y--P10Y' SEX='M' HIV_TEST_RESULTS='165816005' value='0' />
1580 <dataValue dataElement='QRPH_ADX_HTS2_N' AGE_GROUP='P10Y--P15Y' SEX='F' HIV_TEST_RESULTS='165815009'
value='0' />
      <dataValue dataElement='QRPH_ADX_HTS2_N' AGE_GROUP='P10Y--P15Y' SEX='F' HIV_TEST_RESULTS='165816005'
value='0' />
      <dataValue dataElement='QRPH_ADX_HTS2_N' AGE_GROUP='P10Y--P15Y' SEX='M' HIV_TEST_RESULTS='165815009'
value='0' />

```

IHE Quality, Research and Public Health Technical Framework Supplement – Aggregate Data Exchange-HIV (ADX-HIV)

```

1585     <dataValue dataElement='QRPH_ADX_HTS2_N' AGE_GROUP='P10Y--P15Y' SEX='M' HIV_TEST_RESULTS='165816005'
value='0'/>
     <dataValue dataElement='QRPH_ADX_HTS2_N' AGE_GROUP='P15Y--P20Y' SEX='F' HIV_TEST_RESULTS='165815009'
value='0'/>
1590     <dataValue dataElement='QRPH_ADX_HTS2_N' AGE_GROUP='P15Y--P20Y' SEX='F' HIV_TEST_RESULTS='165816005'
value='0'/>
     <dataValue dataElement='QRPH_ADX_HTS2_N' AGE_GROUP='P15Y--P20Y' SEX='M' HIV_TEST_RESULTS='165815009'
value='0'/>
     <dataValue dataElement='QRPH_ADX_HTS2_N' AGE_GROUP='P15Y--P20Y' SEX='M' HIV_TEST_RESULTS='165816005'
value='0'/>
1595     <dataValue dataElement='QRPH_ADX_HTS2_N' AGE_GROUP='P20Y--P25Y' SEX='F' HIV_TEST_RESULTS='165815009'
value='0'/>
     <dataValue dataElement='QRPH_ADX_HTS2_N' AGE_GROUP='P20Y--P25Y' SEX='F' HIV_TEST_RESULTS='165816005'
value='0'/>
     <dataValue dataElement='QRPH_ADX_HTS2_N' AGE_GROUP='P20Y--P25Y' SEX='M' HIV_TEST_RESULTS='165815009'
value='0'/>
1600     <dataValue dataElement='QRPH_ADX_HTS2_N' AGE_GROUP='P20Y--P25Y' SEX='M' HIV_TEST_RESULTS='165816005'
value='0'/>
     <dataValue dataElement='QRPH_ADX_HTS2_N' AGE_GROUP='P25Y--P30Y' SEX='F' HIV_TEST_RESULTS='165815009'
value='0'/>
1605     <dataValue dataElement='QRPH_ADX_HTS2_N' AGE_GROUP='P25Y--P30Y' SEX='F' HIV_TEST_RESULTS='165816005'
value='0'/>
     <dataValue dataElement='QRPH_ADX_HTS2_N' AGE_GROUP='P25Y--P30Y' SEX='M' HIV_TEST_RESULTS='165815009'
value='0'/>
     <dataValue dataElement='QRPH_ADX_HTS2_N' AGE_GROUP='P25Y--P30Y' SEX='M' HIV_TEST_RESULTS='165816005'
value='0'/>
1610     <dataValue dataElement='QRPH_ADX_HTS2_N' AGE_GROUP='P30Y--P35Y' SEX='F' HIV_TEST_RESULTS='165815009'
value='0'/>
     <dataValue dataElement='QRPH_ADX_HTS2_N' AGE_GROUP='P30Y--P35Y' SEX='F' HIV_TEST_RESULTS='165816005'
value='0'/>
1615     <dataValue dataElement='QRPH_ADX_HTS2_N' AGE_GROUP='P30Y--P35Y' SEX='M' HIV_TEST_RESULTS='165815009'
value='0'/>
     <dataValue dataElement='QRPH_ADX_HTS2_N' AGE_GROUP='P30Y--P35Y' SEX='M' HIV_TEST_RESULTS='165816005'
value='0'/>
     <dataValue dataElement='QRPH_ADX_HTS2_N' AGE_GROUP='P35Y--P40Y' SEX='F' HIV_TEST_RESULTS='165815009'
value='0'/>
1620     <dataValue dataElement='QRPH_ADX_HTS2_N' AGE_GROUP='P35Y--P40Y' SEX='F' HIV_TEST_RESULTS='165816005'
value='0'/>
     <dataValue dataElement='QRPH_ADX_HTS2_N' AGE_GROUP='P35Y--P40Y' SEX='M' HIV_TEST_RESULTS='165815009'
value='0'/>
1625     <dataValue dataElement='QRPH_ADX_HTS2_N' AGE_GROUP='P35Y--P40Y' SEX='M' HIV_TEST_RESULTS='165816005'
value='0'/>

```

IHE Quality, Research and Public Health Technical Framework Supplement – Aggregate Data Exchange-HIV (ADX-HIV)

```

1630    <dataValue dataElement='QRPH_ADX_HTS2_N' AGE_GROUP='P40Y--P45Y' SEX='F' HIV_TEST_RESULTS='165815009'
value='0'/>
    <dataValue dataElement='QRPH_ADX_HTS2_N' AGE_GROUP='P40Y--P45Y' SEX='F' HIV_TEST_RESULTS='165816005'
value='0'/>
    <dataValue dataElement='QRPH_ADX_HTS2_N' AGE_GROUP='P40Y--P45Y' SEX='M' HIV_TEST_RESULTS='165815009'
value='0'/>
    <dataValue dataElement='QRPH_ADX_HTS2_N' AGE_GROUP='P40Y--P45Y' SEX='M' HIV_TEST_RESULTS='165816005'
value='0'/>
1635    <dataValue dataElement='QRPH_ADX_HTS2_N' AGE_GROUP='P45Y--P50Y' SEX='F' HIV_TEST_RESULTS='165815009'
value='0'/>
    <dataValue dataElement='QRPH_ADX_HTS2_N' AGE_GROUP='P45Y--P50Y' SEX='F' HIV_TEST_RESULTS='165816005'
value='0'/>
1640    <dataValue dataElement='QRPH_ADX_HTS2_N' AGE_GROUP='P45Y--P50Y' SEX='M' HIV_TEST_RESULTS='165815009'
value='0'/>
    <dataValue dataElement='QRPH_ADX_HTS2_N' AGE_GROUP='P45Y--P50Y' SEX='M' HIV_TEST_RESULTS='165816005'
value='0'/>
    <dataValue dataElement='QRPH_ADX_HTS2_N' AGE_GROUP='P50Y--P9999Y' SEX='F' HIV_TEST_RESULTS='165815009'
value='0'/>
1645    <dataValue dataElement='QRPH_ADX_HTS2_N' AGE_GROUP='P50Y--P9999Y' SEX='F' HIV_TEST_RESULTS='165816005'
value='0'/>
    <dataValue dataElement='QRPH_ADX_HTS2_N' AGE_GROUP='P50Y--P9999Y' SEX='M' HIV_TEST_RESULTS='165815009'
value='0'/>
1650    <dataValue dataElement='QRPH_ADX_HTS2_N' AGE_GROUP='P50Y--P9999Y' SEX='M' HIV_TEST_RESULTS='165816005'
value='0'/>
    <dataValue dataElement='QRPH_ADX_MTCT1_D' PMTCT_HIV_STATUS='165816005**' value='0'/>
    <dataValue dataElement='QRPH_ADX_MTCT1_D' PMTCT_HIV_STATUS='165816005*' value='0'/>
    <dataValue dataElement='QRPH_ADX_MTCT1_D' PMTCT_HIV_STATUS='165815009*' value='0'/>
1655    <dataValue dataElement='QRPH_ADX_MTCT1_N' PMTCT_HIV_STATUS='165816005**' value='0'/>
    <dataValue dataElement='QRPH_ADX_MTCT1_N' PMTCT_HIV_STATUS='165816005*' value='0'/>
    <dataValue dataElement='QRPH_ADX_MTCT1_N' PMTCT_HIV_STATUS='165815009*' value='0'/>
    <dataValue dataElement='QRPH_ADX_MTCT2_D' value='0'/>
    <dataValue dataElement='QRPH_ADX_MTCT2_N' PMTCT_ART_STATUS='432101000124108' value='0'/>
1660    <dataValue dataElement='QRPH_ADX_MTCT2_N' PMTCT_ART_STATUS='432101000124108*' value='0'/>
    <dataValue dataElement='QRPH_ADX_VLS3_D' AGE_GROUP='P0Y--P1Y' SEX='F' value='0'/>
    <dataValue dataElement='QRPH_ADX_VLS3_D' AGE_GROUP='P0Y--P1Y' SEX='M' value='0'/>
    <dataValue dataElement='QRPH_ADX_VLS3_D' AGE_GROUP='P1Y--P5Y' SEX='F' value='0'/>
    <dataValue dataElement='QRPH_ADX_VLS3_D' AGE_GROUP='P1Y--P5Y' SEX='M' value='0'/>
1665    <dataValue dataElement='QRPH_ADX_VLS3_D' AGE_GROUP='P5Y--P10Y' SEX='F' value='0'/>
    <dataValue dataElement='QRPH_ADX_VLS3_D' AGE_GROUP='P5Y--P10Y' SEX='M' value='0'/>
    <dataValue dataElement='QRPH_ADX_VLS3_D' AGE_GROUP='P10Y--P15Y' SEX='F' value='0'/>
    <dataValue dataElement='QRPH_ADX_VLS3_D' AGE_GROUP='P10Y--P15Y' SEX='M' value='0'/>
    <dataValue dataElement='QRPH_ADX_VLS3_D' AGE_GROUP='P15Y--P20Y' SEX='F' value='0'/>

```

```

1670 <dataValue dataElement='QRPH_ADX_VLS3_D' AGE_GROUP='P15Y--P20Y' SEX='M' value='0' />
<dataValue dataElement='QRPH_ADX_VLS3_D' AGE_GROUP='P20Y--P25Y' SEX='F' value='0' />
<dataValue dataElement='QRPH_ADX_VLS3_D' AGE_GROUP='P20Y--P25Y' SEX='M' value='0' />
<dataValue dataElement='QRPH_ADX_VLS3_D' AGE_GROUP='P25Y--P30Y' SEX='F' value='0' />
<dataValue dataElement='QRPH_ADX_VLS3_D' AGE_GROUP='P25Y--P30Y' SEX='M' value='0' />
1675 <dataValue dataElement='QRPH_ADX_VLS3_D' AGE_GROUP='P30Y--P35Y' SEX='F' value='0' />
<dataValue dataElement='QRPH_ADX_VLS3_D' AGE_GROUP='P30Y--P35Y' SEX='M' value='0' />
<dataValue dataElement='QRPH_ADX_VLS3_D' AGE_GROUP='P35Y--P40Y' SEX='F' value='0' />
<dataValue dataElement='QRPH_ADX_VLS3_D' AGE_GROUP='P35Y--P40Y' SEX='M' value='0' />
<dataValue dataElement='QRPH_ADX_VLS3_D' AGE_GROUP='P40Y--P45Y' SEX='F' value='0' />
<dataValue dataElement='QRPH_ADX_VLS3_D' AGE_GROUP='P40Y--P45Y' SEX='M' value='0' />
1680 <dataValue dataElement='QRPH_ADX_VLS3_D' AGE_GROUP='P45Y--P50Y' SEX='F' value='0' />
<dataValue dataElement='QRPH_ADX_VLS3_D' AGE_GROUP='P45Y--P50Y' SEX='M' value='0' />
<dataValue dataElement='QRPH_ADX_VLS3_D' AGE_GROUP='P50Y--P9999Y' SEX='F' value='0' />
<dataValue dataElement='QRPH_ADX_VLS3_D' AGE_GROUP='P50Y--P9999Y' SEX='M' value='0' />
1685 <dataValue dataElement='QRPH_ADX_VLS3_N' AGE_GROUP='P0Y--P1Y' SEX='F' value='0' />
<dataValue dataElement='QRPH_ADX_VLS3_N' AGE_GROUP='P0Y--P1Y' SEX='M' value='0' />
<dataValue dataElement='QRPH_ADX_VLS3_N' AGE_GROUP='P1Y--P5Y' SEX='F' value='0' />
<dataValue dataElement='QRPH_ADX_VLS3_N' AGE_GROUP='P1Y--P5Y' SEX='M' value='0' />
<dataValue dataElement='QRPH_ADX_VLS3_N' AGE_GROUP='P5Y--P10Y' SEX='F' value='0' />
<dataValue dataElement='QRPH_ADX_VLS3_N' AGE_GROUP='P5Y--P10Y' SEX='M' value='0' />
1690 <dataValue dataElement='QRPH_ADX_VLS3_N' AGE_GROUP='P10Y--P15Y' SEX='F' value='0' />
<dataValue dataElement='QRPH_ADX_VLS3_N' AGE_GROUP='P10Y--P15Y' SEX='M' value='0' />
<dataValue dataElement='QRPH_ADX_VLS3_N' AGE_GROUP='P15Y--P20Y' SEX='F' value='0' />
<dataValue dataElement='QRPH_ADX_VLS3_N' AGE_GROUP='P15Y--P20Y' SEX='M' value='0' />
<dataValue dataElement='QRPH_ADX_VLS3_N' AGE_GROUP='P20Y--P25Y' SEX='F' value='0' />
1695 <dataValue dataElement='QRPH_ADX_VLS3_N' AGE_GROUP='P20Y--P25Y' SEX='M' value='0' />
<dataValue dataElement='QRPH_ADX_VLS3_N' AGE_GROUP='P25Y--P30Y' SEX='F' value='0' />
<dataValue dataElement='QRPH_ADX_VLS3_N' AGE_GROUP='P25Y--P30Y' SEX='M' value='0' />
<dataValue dataElement='QRPH_ADX_VLS3_N' AGE_GROUP='P30Y--P35Y' SEX='F' value='0' />
<dataValue dataElement='QRPH_ADX_VLS3_N' AGE_GROUP='P30Y--P35Y' SEX='M' value='0' />
1700 <dataValue dataElement='QRPH_ADX_VLS3_N' AGE_GROUP='P35Y--P40Y' SEX='F' value='0' />
<dataValue dataElement='QRPH_ADX_VLS3_N' AGE_GROUP='P35Y--P40Y' SEX='M' value='0' />
<dataValue dataElement='QRPH_ADX_VLS3_N' AGE_GROUP='P40Y--P45Y' SEX='F' value='0' />
<dataValue dataElement='QRPH_ADX_VLS3_N' AGE_GROUP='P40Y--P45Y' SEX='M' value='0' />
<dataValue dataElement='QRPH_ADX_VLS3_N' AGE_GROUP='P45Y--P50Y' SEX='F' value='0' />
1705 <dataValue dataElement='QRPH_ADX_VLS3_N' AGE_GROUP='P45Y--P50Y' SEX='M' value='0' />
<dataValue dataElement='QRPH_ADX_VLS3_N' AGE_GROUP='P50Y--P9999Y' SEX='F' value='0' />
<dataValue dataElement='QRPH_ADX_VLS3_N' AGE_GROUP='P50Y--P9999Y' SEX='M' value='0' />
</group>
</adx>

```


1710 **Appendix 8E – (Informative) Representation of age groups in ADX**

The representation of age group ranges code should be unambiguous, human readable and machine-readable. There being no convention for expressing or representing age ranges for aggregate data exchange, ADX express an age group band through two simple durations as defined in the ISO 8601.

1715 ADX describes an age group range as two durations: <duration1> -- <duration2>. Where duration1 specifies the beginning of the age group band (everyone who is this age and above) and <duration2> signify the upper bound of the age group band <duration2>. Therefore, age groups like "1-9 years" means everyone who is at least one year old and less than 10 years old represented as P1Y--P10Y, age group like "10-14 years" means everyone who is at least 10 years old and less than 15 years old is represented as P10Y--P15Y.

Durations define the amount if an intervening time between two time points. These durations are represented in the form P[n]Y[n]M[n]DT[n]H[n]M[n]S or P[n]W. The [n] is replaced by the value for each of the time elements that follow the [n] and the letters have the meaning:

- *P* is the duration designator (for *period*) placed at the start of the duration representation.
- 1725 • *Y* is the year designator that follows the value for the number of years.
- *M* is the month designator that follows the value for the number of months.
- *W* is the week designator that follows the value for the number of weeks.
- *D* is the day designator that follows the value for the number of days.
- *T* is the time designator that precedes the time components of the representation.
- 1730 • *H* is the hour designator that follows the value for the number of hours.
- *M* is the minute designator that follows the value for the number of minutes.
- *S* is the second designator that follows the value for the number of seconds.

Examples:

	<i>Age group range</i>	<i>Age group code</i>
1735	0-6 Months	P0M--P7M
	<1 year	P0Y--P1Y
	1-4 Years	P1Y--P5Y
	5-9 Years	P5Y--P10Y
	10-14 Years	P10Y--P15Y
1740	15-19 Years	P15Y--P20Y
	20+ Years	P20Y--P9999Y

Time Intervals can be expressed using a “double hyphen”, which makes it easier for human to read, are machine-readable and comply with Section 4.4.2 of the ISO specification. Unknown age is defined as “./..”.

1745 **Appendix 8F – (Informative) Mapping Sex codes between HL7 value set and ISO/IEC 5218**

1750 There are several ways for specifying sex within health systems. HL7 administrative sex value set is used to define sex codes within the ADX-HIV Content Profile. In the interest of greater and easier interoperability, this informative appendix shows how jurisdictions can map their sex codes to those defined in ADX-HIV Profile using ISO/IEC 5801. ISO/IEC 5801, *Information technology — Codes for the representation of human sexes*, is an [international standard](#) that defines a representation of human sexes through a language-neutral single-digit code.

HL7 v2 Administrative Sex value set		ISO/IEC 5218	
Code	Description	Code	Description
U	Unknown	0	not known
M	Male	1	male
F	Female	2	female
N	Not applicable	9	not applicable
O	Other		
A	Ambiguous		

1755 With such mapping, it is possible to bind the sex codes in ADX-HIV with the codes that are used by a jurisdiction.

Appendix 8G – (Informative) Challenges associated with aligning disaggregations

1760 For purposes of illustrating the challenges of aligning disaggregations, Figure X.4.2.4.1-2 is replicated (below).

PEPFAR MER 2.0		WHO/UNAIDS		The Global Fund		Kenya		Rwanda			
Age Group	ISO 8601 Age group code	Age Group	ISO 8601 Age group code	Age Group	ISO 8601 Age group code	Age Group	ISO 8601 Age group code	Age Group	ISO 8601 Age group code		
<1 Yr	P0Y--P1Y	<1 Yr	P0Y--P1Y	0-14 Yrs	P0Y--P15Y	<1 Yr	P0Y--P1Y	<1 Yr	P0Y--P1Y		
1-4 Yrs	P1Y--P5Y	1-4 Yrs	P1Y--P5Y			1-9 Yrs	P1Y--P10Y	1-4 Yrs	P1Y--P5Y		
5-9 Yrs	P5Y--P10Y	5-9 Yrs	P5Y--P10Y			10-14 Yrs	P10Y--P15Y	5-9 Yrs	P5Y--P10Y		
10-14 Yrs	P10Y--P15Y	10-14 Yrs	P10Y--P15Y			15-19 Yrs	P15Y--P20Y	10-14 Yrs	P10Y--P15Y		
15-19 Yrs	P15Y--P20Y	15-19 Yrs	P15Y--P20Y	15-19 Yrs	P15Y--P20Y	15-19 Yrs	P15Y--P20Y	15-19 Yrs	P15Y--P20Y		
20-24 Yrs	P20Y--P25Y	20+ Yrs	P20Y--P9999Y	20-24 Yrs	P20Y--P25Y	20-24 Yrs	P20Y--P25Y	20-24 Yrs	P20Y--P25Y		
25-29 Yrs	P25Y--P30Y			25+ Yrs	P25Y--P9999Y					25-49 Yrs	P25Y--P50Y
30-34 Yrs	P30Y--P35Y										
35-39 Yrs	P35Y--P40Y										
40-44 Yrs	P40Y--P45Y										
45-49 Yrs	P45Y--P50Y										
50+ Yrs	P50Y--P9999Y										

Figure 8D-1: Example Age Disaggregations

1765 As may be noted from the figure, WHO/UNAIDS, PEPFAR and Rwanda age disaggregations differ from those of Kenya’s. Content that has been gathered by WHO/UNAIDS, PEPFAR and Rwanda in its first 4 disaggregations (P0Y—P1Y, P1Y—P5Y, P5Y—P10Y, P10Y—P15Y) or Kenya’s MOH in its first 3 disaggregations (P0Y—P1Y, P1Y—P10Y, P10Y—P15Y) may be “lumped” to report to the Global Fund (P0Y-P15Y). Content reported to Kenya’s MOH in its second disaggregation (P1Y-P10Y) would, however, need to be “split” to report to

1770 WHO/UNAIDS and PEPFAR. This latter issue represents a challenge for how such content is to be shared from one HMIS to another. Although it is possible to leverage ratios (based on the demographic pyramid, for example) to prorate values – this is not well-regarded as a solution.

1775 Generally, the present profile has favored disaggregations at the highest level of precision (from among the source specifications) with the tacit expectation that these may be successfully “lumped” to accommodate less-precise disaggregations. It is accepted, however, that the challenge of disaggregation mismatches is not altogether solved.

Volume 3 Namespace Additions

Add the following terms to the IHE Namespace:

1780 None

1785

Volume 4 – National Extensions

Add appropriate Country section

3 National Extensions

3.1 Aggregate Data Exchange-HIV - PEPFAR Extension

1790 This information contains the US President’s Emergency Plan For AIDS Relief (PEPFAR) extensions for the Aggregate Data Exchange-HIV Profile. The PEPFAR Extension content definitions further constrain the definitions available in Volume 3.

3.1.1 Comment Submission

1795 This national extension document was authored under the sponsorship and supervision of Xenophon Santas, who welcomes comments on this document and the IHE USA initiative. Comments should be directed to:

IHE USA,

Email: jkariuki@cdc.gov and xms1@cdc.gov

3.1.2 ADX-HIV

1800 All requirements of the ADX-HIV Profile in the PEPFAR Realm for the core HIV indicator data elements are as specified in Volume 3 Section 8.5.3 with the exception of additional constraints in the disaggregations. Finer disaggregations for age group has been used in the PEPFAR extension to ensure mapping to the ADX-HIV content for the core HIV data elements described in Section 8.5.3. Additional constraints include indicator data elements and their associated
1805 disaggregations reported from health facilities, which are specific to PEPFAR reporting.

3.1.3 ADX-HIV PEPFAR Content Modules

3.1.3.1 Number of individuals who received HIV Testing Services (HTS) and received their test results

1810 This indicator reports the number of persons who have been tested for HIV and who know their status. It is expressed as a number; there is a numerator but no denominator. The data element is QRPH_ADX_HTS2_N; it has 11 disaggregate groups that are disaggregated by age group, by sex, and by HIV test result, (positive vs negative indicated by SNOMED-CT codes 165816005 and 165815009, respectively). Pediatric and malnutrition disaggregate groups are not disaggregated by sex.

1815 **Table 3.1.3.1-1: Number of individuals who received HIV Testing Services (HTS) and received their test results**

Indicator		Number of individuals who received HIV Testing Services (HTS) and received their test results		
Indicator Code with Mapping				
WHO/UNAIDS	PEPFAR	Global Fund	Kenya	Rwanda
HTS.2	HTS_TST	HTS-1	HIV01	-

IHE Quality, Research and Public Health Technical Framework Supplement – Aggregate Data Exchange-HIV (ADX-HIV)

Numerator		Number of individuals who received HIV Testing Services (HTS) and received their test results			
QRPH	WHO/UNAIDS	PEPFAR	Global Fund	Kenya	Rwanda
QRPH_ADX_HTS2_N	HTS.2	HTS_TST_N	HTS-1	HIV01	-
Denominator		NONE			
Disaggregate group(s)		Index, Emergency, Inpatient, STI, TB, VCT, Other PITC			
Disaggregation					
Disaggregation Name	Age Group Code	Sex Code (HL7 codes)		HIV test Result (SNOMED-CT Code)	
<1, Female, Positive	P0Y--P1Y	F		165816005	
<1, Male, Positive	P0Y--P1Y	M		165816005	
1-4, Female, Positive	P1Y--P5Y	F		165816005	
1-4, Male, Positive	P1Y--P5Y	M		165816005	
5-9, Female, Positive	P5Y--P10Y	F		165816005	
5-9, Male, Positive	P5Y--P10Y	M		165816005	
10-14, Female, Positive	P10Y--P15Y	F		165816005	
10-14, Male, Positive	P10Y--P15Y	M		165816005	
15-19, Female, Positive	P15Y--P20Y	F		165816005	
15-19, Male, Positive	P15Y--P20Y	M		165816005	
20-24, Female, Positive	P20Y--P25Y	F		165816005	
20-24, Male, Positive	P20Y--P25Y	M		165816005	
25-29, Female, Positive	P25Y--P30Y	F		165816005	
25-29, Male, Positive	P25Y--P30Y	M		165816005	
30-34, Female, Positive	P30Y--P35Y	F		165816005	
30-34, Male, Positive	P30Y--P35Y	M		165816005	
35-39, Female, Positive	P35Y--P40Y	F		165816005	
35-39, Male, Positive	P35Y--P40Y	M		165816005	
40-44, Female, Positive	P40Y--P45Y	F		165816005	
40-44, Male, Positive	P40Y--P45Y	M		165816005	
45-49, Female, Positive	P45Y--P50Y	F		165816005	
45-49, Male, Positive	P45Y--P50Y	M		165816005	
50+, Female, Positive	P50Y--P9999Y	F		165816005	
50+, Male, Positive	P50Y--P9999Y	M		165816005	
Unknown Age, Female, Positive	../..	F		165816005	
Unknown Age, Male, Positive	../..	M		165816005	
<1, Female, Negative	P0Y--P1Y	F		165815009	
<1, Male, Negative	P0Y--P1Y	M		165815009	
1-4, Female, Negative	P1Y--P5Y	F		165815009	
1-4, Male, Negative	P1Y--P5Y	M		165815009	
5-9, Female, Negative	P5Y--P10Y	F		165815009	

IHE Quality, Research and Public Health Technical Framework Supplement – Aggregate Data Exchange-HIV (ADX-HIV)

5-9, Male, Negative	P5Y--P10Y	M	165815009
10-14, Female, Negative	P10Y--P15Y	F	165815009
10-14, Male, Negative	P10Y--P15Y	M	165815009
15-19, Female, Negative	P15Y--P20Y	F	165815009
15-19, Male, Negative	P15Y--P20Y	M	165815009
20-24, Female, Negative	P20Y--P25Y	F	165815009
20-24, Male, Negative	P20Y--P25Y	M	165815009
25-29, Female, Negative	P25Y--P30Y	F	165815009
25-29, Male, Negative	P25Y--P30Y	M	165815009
30-34, Female, Negative	P30Y--P35Y	F	165815009
30-34, Male, Negative	P30Y--P35Y	M	165815009
35-39, Female, Negative	P35Y--P40Y	F	165815009
35-39, Male, Negative	P35Y--P40Y	M	165815009
40-44, Female, Negative	P40Y--P45Y	F	165815009
40-44, Male, Negative	P40Y--P45Y	M	165815009
45-49, Female, Negative	P45Y--P50Y	F	165815009
45-49, Male, Negative	P45Y--P50Y	M	165815009
50+, Female, Negative	P50Y--P9999Y	F	165815009
50+, Male, Negative	P50Y--P9999Y	M	165815009
Unknown Age, Female, Negative	../..	F	165816009
Unknown Age, Male, Negative	../..	M	165816009
Disaggregate group(s)		Voluntary medical male circumcision (VMMC)	
<1, Male, Positive	P0Y--P1Y	M	165816005
1-4, Male, Positive	P1Y--P5Y	M	165816005
5-9, Male, Positive	P5Y--P10Y	M	165816005
10-14, Male, Positive	P10Y--P15Y	M	165816005
15-19, Male, Positive	P15Y--P20Y	M	165816005
20-24, Male, Positive	P20Y--P25Y	M	165816005
25-29, Male, Positive	P25Y--P30Y	M	165816005
30-34, Male, Positive	P30Y--P35Y	M	165816005
35-39, Male, Positive	P35Y--P40Y	M	165816005
40-44, Male, Positive	P40Y--P45Y	M	165816005
45-49, Male, Positive	P45Y--P50Y	M	165816005
50+, Male, Positive	P50Y--P9999Y	M	165816005
Unknown Age, Male, Positive	../..	M	165816005
<1, Male, Negative	P0Y--P1Y	M	165815009
1-4, Male, Negative	P1Y--P5Y	M	165815009
5-9, Male, Negative	P5Y--P10Y	M	165815009
10-14, Male, Negative	P10Y--P15Y	M	165815009
15-19, Male, Negative	P15Y--P20Y	M	165815009

IHE Quality, Research and Public Health Technical Framework Supplement – Aggregate Data Exchange-HIV (ADX-HIV)

20-24, Male, Negative	P20Y--P25Y	M	165815009
25-29, Male, Negative	P25Y--P30Y	M	165815009
30-34, Male, Negative	P30Y--P35Y	M	165815009
35-39, Male, Negative	P35Y--P40Y	M	165815009
40-44, Male, Negative	P40Y--P45Y	M	165815009
45-49, Male, Negative	P45Y--P50Y	M	165815009
50+, Male, Negative	P50Y--P9999Y	M	165815009
Unknown Age, Male, Negative	../..	M	165815009
Disaggregate group(s)		PMTCT [ANC1-Only], PMTCT [Post ANC1: Pregnancy/L&D/BF]	
<1, Female, Positive	P0Y--P1Y	F	165816005
1-4, Female, Positive	P1Y--P5Y	F	165816005
5-9, Female, Positive	P5Y--P10Y	F	165816005
10-14, Female, Positive	P10Y--P15Y	F	165816005
15-19, Female, Positive	P15Y--P20Y	F	165816005
20-24, Female, Positive	P20Y--P25Y	F	165816005
25-29, Female, Positive	P25Y--P30Y	F	165816005
30-34, Female, Positive	P30Y--P35Y	F	165816005
35-39, Female, Positive	P35Y--P40Y	F	165816005
40-44, Female, Positive	P40Y--P45Y	F	165816005
45-49, Female, Positive	P45Y--P50Y	F	165816005
50+, Female, Positive	P50Y--P9999Y	F	165816005
Unknown Age, Female, Positive	../..	F	165816005
<1, Female, Negative	P0Y--P1Y	F	165815009
1-4, Female, Negative	P1Y--P5Y	F	165815009
5-9, Female, Negative	P5Y--P10Y	F	165815009
10-14, Female, Negative	P10Y--P15Y	F	165815009
15-19, Female, Negative	P15Y--P20Y	F	165815009
20-24, Female, Negative	P20Y--P25Y	F	165815009
25-29, Female, Negative	P25Y--P30Y	F	165815009
30-34, Female, Negative	P30Y--P35Y	F	165815009
35-39, Female, Negative	P35Y--P40Y	F	165815009
40-44, Female, Negative	P40Y--P45Y	F	165815009
45-49, Female, Negative	P45Y--P50Y	F	165815009
50+, Female, Negative	P50Y--P9999Y	F	165815009
Unknown Age, Female, Negative	../..	F	165815009
Disaggregate group(s)		Pediatric	
<1, Female, Positive	P0Y--P1Y	F	165815005
<1, Male, Positive	P0Y--P1Y	M	165815005
1-4, Female, Positive	P1Y--P5Y	F	165815005
1-4, Male, Positive	P1Y--P5Y	M	165815005

<1, Female, Negative	P0Y--P1Y	F	165815009
<1, Male, Negative	P0Y--P1Y	M	165815009
1-4, Female, Negative	P1Y--P5Y	F	165815009
1-4, Male, Negative	P1Y--P5Y	M	165815009
Disaggregate group(s)		Malnutrition	
<1, Female, Positive	P0Y--P1Y	F	165815005
<1, Male, Positive	P0Y--P1Y	M	165815005
1-4, Female, Positive	P1Y--P5Y	F	165815005
1-4, Male, Positive	P1Y--P5Y	M	165815005
<1, Female, Negative	P0Y--P1Y	F	165815009
<1, Male, Negative	P0Y--P1Y	M	165815009
1-4, Female, Negative	P1Y--P5Y	F	165815009
1-4, Male, Negative	P1Y--P5Y	M	165815009

3.1.3.2 Proportion of pregnant women with known HIV status at antenatal care

1820 This indicator reports the proportion of pregnant women with known HIV status at antenatal care (ANC). It is expressed as a percentage. The numerator is the number of women who know their HIV status at ANC entry or who are newly tested for HIV during the current pregnancy. The denominator is the total number of women who attended ANC during the reporting period. The data elements are QRPH_ADX_MTCT_N (numerator) and QRPH_ADX_MTCT_D (denominator). The numerator is disaggregated by age group, and by HIV status at entry to the ANC for the current pregnancy and the denominator is disaggregated by age group. Known Positive at entry is the number of pregnant women attending ANC for a new pregnancy who were tested and confirmed HIV-positive at any point prior to the current pregnancy. Newly tested positive is the number of women attending first ANC visit who were tested for HIV and received a positive result. Women who tested negative prior to this pregnancy and test positive at 1825 first ANC visit for new pregnancy should be counted as newly tested positive. New Negatives is the number of women who test negative for current pregnancy and have not had prior HIV test. Retesting of HIV-negative women for the current pregnancy at subsequent ANC visits, L&D, 1830 postnatal clinic or family planning clinic should not be counted as newly tested negative.

Table 3.1.3.2-1: Proportion of pregnant women with known HIV status at antenatal care

Indicator		Percentage of pregnant women with known HIV status at antenatal care			
Indicator Code with Mapping					
WHO/UNAIDS	PEPFAR	Global Fund	Kenya	Rwanda	
MTCT.1	PMTCT_STAT	PMTCT-1	HIV02	-	
Numerator		Number of pregnant women with known HIV status at first antenatal care visit (ANC1)			
QRPH	WHO/UNAIDS	PEPFAR	Global Fund	Kenya	Rwanda

IHE Quality, Research and Public Health Technical Framework Supplement – Aggregate Data Exchange-HIV (ADX-HIV)

QRPH_ADX_MTCT1_N	-	-	-	HV02-05	-
Denominator		Number of new ANC clients in the reporting period			
QRPH	WHO/UNAIDS	PEPFAR	Global Fund	Kenya	Rwanda
QRPH_ADX_MTCT1_D	-	-	-	-	-
Disaggregation					
Disaggregation Name		Age Group Code		HIV test results codes (SNOMED-CT Code)	
<10, Known Positive		P0Y--P10Y		165816005	
10-14, Known Positive		P10Y--P15Y		165816005	
15-19, Known Positive		P15Y--P20Y		165816005	
20-24, Known Positive		P20Y--P25Y		165816005	
25-29, Known Positive		P25Y--P30Y		165816005	
30-34, Known Positive		P30Y--P35Y		165816005	
35-39, Known Positive		P35Y--P40Y		165816005	
40-44, Known Positive		P40Y--P45Y		165816005	
45-49, Known Positive		P45Y--P50Y		165816005	
50+, Known Positive		P50Y--P9999Y		165816005	
Unknown age, Known Positive		../..		165816005	
<10, Newly Tested Positive		P0Y--P10Y		165816005*	
10-14, Newly Tested Positive		P10Y--P15Y		165816005*	
15-19, Newly Tested Positive		P15Y--P20Y		165816005*	
20-24, Newly Tested Positive		P20Y--P25Y		165816005*	
25-29, Newly Tested Positive		P25Y--P30Y		165816005*	
30-34, Newly Tested Positive		P30Y--P35Y		165816005*	
35-39, Newly Tested Positive		P35Y--P40Y		165816005*	
40-44, Newly Tested Positive		P40Y--P45Y		165816005*	
45-49, Newly Tested Positive		P45Y--P50Y		165816005*	
50+, Newly Tested Positive		P50Y--P9999Y		165816005*	
Unknown age, Newly Tested Positive		../..		165816005*	
<10, New Negative		P0Y--P10Y		165815009*	
10-14, New Negative		P10Y--P15Y		165815009	
15-19, New Negative		P15Y--P20Y		165815009*	
20-24, New Negative		P20Y--P25Y		165815009*	
25-29, New Negative		P25Y--P30Y		165815009*	
30-34, New Negative		P30Y--P35Y		165815009*	
35-39, New Negative		P35Y--P40Y		165815009*	
40-44, New Negative		P40Y--P45Y		165815009*	
45-49, New Negative		P45Y--P50Y		165815009*	
50+, New Negative		P50Y--P9999Y		165815009*	
Unknown age, New Negative		../..		165815009*	

<10, Recent Negatives at Entry	P0Y--P10Y	165815009*
10-14, Recent Negatives at Entry	P10Y--P15Y	165815009
15-19, Recent Negatives at Entry	P15Y--P20Y	165815009*
20-24, Recent Negatives at Entry	P20Y--P25Y	165815009*
25-29, Recent Negatives at Entry	P25Y--P30Y	165815009*
30-34, Recent Negatives at Entry	P30Y--P35Y	165815009*
35-39, Recent Negatives at Entry	P35Y--P40Y	165815009*
40-44, Recent Negatives at Entry	P40Y--P45Y	165815009*
45-49, Recent Negatives at Entry	P45Y--P50Y	165815009*
50+, Recent Negatives at Entry	P50Y--P9999Y	165815009*
Unknown age, Recent Negatives at Entry	P50Y--P9999Y	165815009*

1835

3.1.3.3 Number of adults and children newly enrolled on antiretroviral therapy (ART)

This indicator reports the number of HIV positive persons who were newly started on ART during the reporting period. It is expressed as a number; there is a numerator but no denominator. The data element is QRPH_ADX_ART1_N and it is disaggregated by age group, and by sex.

1840

Table 3.1.3.3-1: Number of adults and children newly enrolled on antiretroviral therapy (ART)

Indicator		Number of adults and children newly enrolled on antiretroviral therapy (ART)			
Indicator Code with Mapping					
WHO/UNAIDS	PEPFAR	Global Fund	Kenya	Rwanda	
ART.1	TX_NEW	-	HIV03.4	-	
Numerator		Number of adults and children newly enrolled on antiretroviral therapy (ART)			
QRPH	WHO/UNAIDS	PEPFAR	Global Fund	Kenya	Rwanda
QRPH_ADX_ART1_N	ART.1	TX_NEW	-	HIV03.4	-
Denominator		NONE			
Disaggregation					
Disaggregation Name	Age Group Code	Sex Code		Notes	
<1, Female	P0Y--P1Y	F			
<1, Male	P0Y--P1Y	M			
1-4, Female	P1Y--P5Y	F			
1-4, Male	P1Y--P5Y	M			
5-9, Female	P5Y--P10Y	F			
5-9, Male	P5Y--P10Y	M			
10-14, Female	P10Y--P15Y	F			

10-14, Male	P10Y--P15Y	M	
15-19, Female	P15Y--P20Y	F	
15-19, Male	P15Y--P20Y	M	
20-24, Female	P20Y--P25Y	F	
20-24, Male	P20Y--P25Y	M	
25-29, Female	P25Y--P30Y	F	
25-29, Male	P25Y--P30Y	M	
30-34, Female	P30Y--P35Y	F	
30-34, Male	P30Y--P35Y	M	
35-39, Female	P35Y--P40Y	F	
35-39, Male	P35Y--P40Y	M	
40-44, Female	P40Y--P45Y	F	
40-44, Male	P40Y--P45Y	M	
45-49, Male	P45Y--P50Y	F	
45-49, Male	P45Y--P50Y	M	
50+, Female	P50Y--P9999Y	F	
50+, Male	P50Y--P9999Y	M	
Unknown age, Female	../..	F	
Unknown age, Male	../..	M	
Disaggregate group(s)	Breastfeeding		
Breastfeeding status at ART initiation			
Disaggregate group(s)	Key Population type		
People who inject drugs (PWID)			
Men who have sex with men (MSM)			
Transgender people (TG)			
Female sex workers (FSW)			
People in prison and other closed settings			

3.1.3.4 Proportion of people living with HIV who are receiving antiretroviral therapy (ART)

1845

This indicator reports the proportion of people living with HIV who are receiving ART. It is expressed as a percentage. The numerator is the number of people living with HIV currently receiving ART during the reporting period. The denominator is the estimated total number of people living with HIV. Generally, this denominator is not generated from individual health facilities but it is estimated using modelling estimates such as Spectrum AIM. The data element is QRPH_ADX_ART3_N (numerator) and it is disaggregated by age group, and by sex.

1850

Table 3.1.3.4-1: Proportion of people living with HIV who are receiving antiretroviral therapy (ART)

Indicator		Number of people living with HIV who are receiving antiretroviral therapy (ART)			
Indicator Code with Mapping					
WHO/UNAIDS	PEPFAR	Global Fund	Kenya	Rwanda	
ART.3	TX_CURR	TCS-1	HIV03.6	-	
Numerator		Number of adults and children currently receiving antiretroviral therapy (ART)			
QRPH	WHO/UNAIDS	PEPFAR	Global Fund	Kenya	Rwanda
QRPH_ADX_ART3_N	ART.3	TX_CURR	TCS-1	HIV03.6	-
Denominator		N/A			
Disaggregation					
Disaggregation Name	Age Group Code	Sex Code		notes	
<1, Female	P0Y--P1Y	F			
<1, Male	P0Y--P1Y	M			
1-4, Female	P1Y—P5Y	F			
1-4, Male	P1Y—P5Y	M			
5-9, Female	P5Y--P10Y	F			
5-9, Male	P5Y--P10Y	M			
10-14, Female	P10Y--P15Y	F			
10-14, Male	P10Y--P15Y	M			
15-19, Female	P15Y--P20Y	F			
15-19, Male	P15Y--P20Y	M			
20-24, Female	P20Y--P25Y	F			
20-24, Male	P20Y--P25Y	M			
25-29, Female	P25Y--P30Y	F			
25-29, Male	P25Y--P30Y	M			
30-34, Female	P30Y--P35Y	F			
30-34, Male	P30Y--P35Y	M			
35-39, Female	P35Y--P40Y	F			
35-39, Male	P35Y--P40Y	M			
40-44, Female	P40Y--P45Y	F			
40-44, Male	P40Y--P45Y	M			
45-49, Male	P45Y--P50Y	F			
45-49, Male	P45Y--P50Y	M			
50+, Female	P50Y--P9999Y	F			
50+, Male	P50Y--P9999Y	M			

1855 **3.1.3.5 Proportion of HIV-positive pregnant women who received antiretroviral treatment to reduce risk of mother-to-child-transmission (MTCT) during pregnancy.**

1860 This indicator reports the proportion of pregnant women who received ART during pregnancy. It is expressed as a percentage. The numerator is the number of women who were newly started on ART or already on ART at the beginning of the current pregnancy. The denominator is the total number of women who are known to be HIV positive, which include known HIV positive and newly tested HIV positive, during the reporting period. The data elements are QRPH_ADX_MTCT2_N (numerator) and QRPH_ADX_MTCT2_D (denominator). The numerator is disaggregated by new on ART and already on ART during the current pregnancy.

1865 **Table 3.1.3.5-1: Proportion of HIV-positive pregnant women who received antiretroviral treatment to reduce risk of mother-to-child-transmission (MTCT) during pregnancy.**

Indicator		Percentage of HIV-positive pregnant women who received antiretroviral treatment to reduce risk of mother-to-child-transmission (MTCT) during pregnancy.			
Indicator Code with Mapping					
WHO/UNAIDS	PEPFAR	Global Fund	Kenya	Rwanda	
MTCT.2	PMTCT_ART	PMTCT-2.1	HIV02-03	-	
Numerator		Number of HIV-positive pregnant women who received ART to reduce the risk of mother-to-child-transmission during pregnancy			
QRPH	WHO/UNAIDS	PEPFAR	Global Fund	Kenya	Rwanda
QRPH_ADX_MTCT2_N				HV02-15	
Denominator		Number of HIV positive pregnant women who attended ANC or had a facility-based delivery within the reporting period.			
QRPH	WHO/UNAIDS	PEPFAR	Global Fund	Kenya	Rwanda
QRPH_ADX_MTCT2_D		PMTCT_STAT_POS		HV02-09	
Disaggregation					
Disaggregation Name			Age Group Code	Notes	
<10, New on ART			P0Y--P10Y		
10-14, New on ART			P10Y--P15Y		
15-19, New on ART			P15Y--P20Y		
20-24, New on ART			P20Y--P25Y		
25-29, New on ART			P25Y--P30Y		
30-34, New on ART			P30Y--P35Y		
35-39, New on ART			P35Y--P40Y		
40-44, New on ART			P40Y--P45Y		
45-49, New on ART			P45Y--P50Y		
50+, New on ART			P50Y--P9999Y		
Unknown age, New on ART			../.		

<10, Already on ART at the beginning of the current pregnancy	P0Y--P10Y	
10-14, Already on ART at the beginning of the current pregnancy	P10Y--P15Y	
15-19, Already on ART at the beginning of the current pregnancy	P15Y--P20Y	
20-24, Already on ART at the beginning of the current pregnancy	P20Y--P25Y	
25-29, Already on ART at the beginning of the current pregnancy	P25Y--P30Y	
30-34, Already on ART at the beginning of the current pregnancy	P30Y--P35Y	
35-39, Already on ART at the beginning of the current pregnancy	P35Y--P40Y	
40-44, Already on ART at the beginning of the current pregnancy	P40Y--P45Y	
45-49, Already on ART at the beginning of the current pregnancy	P45Y--P50Y	
50+, Already on ART at the beginning of the current pregnancy	P50Y--P9999Y	
Unknown age, Already on ART at the beginning of the current pregnancy	../..	

3.1.3.6 Proportion of people living with HIV and on ART who are virologically suppressed

1870 This indicator reports the proportion of patients on ART with a viral load result documented within the past 12 months with a suppressed viral load. It is expressed as a percentage. The numerator is the number of people number of people living with HIV and on ART who have a suppressed viral load (<1000 copies/mL) documented within the past 12 months. The denominator is the number of people number of people living with HIV and on ART who have a viral load result documented in the past 12 months. The data elements are

1875 QRPH_ADX_VLS3_N (numerator) and QRPH_ADX_VLS3_D (denominator); they are disaggregated by age group and by sex. There is an additional disaggregation for those who are pregnant and breastfeeding mothers.

1880 **Table 3.1.3.6-1: Proportion of people living with HIV and on ART who are virologically suppressed**

Indicator		Percentage of ART patients with a suppressed viral load (VL) results (<1000 copies/ml) documented in the medical or laboratory records/laboratory information system (LIS) within the past 12 months			
Indicator Code with Mapping					
WHO/UNAIDS	PEPFAR	Global Fund	Kenya	Rwanda	
VLS.3	TX_PVLS	-	HIV03-12	-	
Numerator		Number of ART patients with a suppressed viral load (VL) results (<1000 copies/ml) documented in the medical or laboratory records/laboratory information system (LIS) within the past 12 months			
QRPH	WHO/UN AIDS	PEPFAR	Global Fund	Kenya	Rwanda
QRPH_ADX_VLS3_N			HIV03-098		
Denominator		Number ART patients with a VL result documented in the medical or laboratory records/laboratory information system (LIS) within the past 12 months			

IHE Quality, Research and Public Health Technical Framework Supplement – Aggregate Data Exchange-HIV (ADX-HIV)

QRPH	WHO/UN AIDS	PEPFAR	Global Fund	Kenya	Rwanda
QRPH_ADX_VLS3_D			HIV03-099		
Disaggregation					
Disaggregation Name		Age Group Code	Sex Code	Notes	
Disaggregate group(s)			Indication by Age/Sex		
<1, Female, Routine		P0Y--P1Y	F		
<1, Male, Routine		P0Y--P1Y	M		
1-4, Female, Routine		P1Y--P5Y	F		
1-4, Male, Routine		P1Y--P5Y	M		
5-9, Female, Routine		P5Y--P10Y	F		
5-9, Male, Routine		P5Y--P10Y	M		
10-14, Female, Routine		P10Y--P15Y	F		
10-14, Male, Routine		P10Y--P15Y	M		
15-19, Female, Routine		P15Y--P20Y	F		
15-19, Male, Routine		P15Y--P20Y	M		
20-24, Female, Routine		P20Y--P25Y	F		
20-24, Male, Routine		P20Y--P25Y	M		
25-29, Female, Routine		P25Y--P30Y	F		
25-29, Male, Routine		P25Y--P30Y	M		
30-34, Female, Routine		P30Y--P35Y	F		
30-34, Male, Routine		P30Y--P35Y	M		
35-39, Female, Routine		P35Y--P40Y	F		
35-39, Male, Routine		P35Y--P40Y	M		
40-44, Female, Routine		P40Y--P45Y	F		
40-44, Male, Routine		P40Y--P45Y	M		
45-49, Female, Routine		P45Y--P50Y	F		
45-49, Male, Routine		P45Y--P50Y	M		
50+, Female, Routine		P50Y--P9999Y	F		
50+, Male, Routine		P50Y--P9999Y	M		
Unknown Age, Female, Routine		../.	F		
Unknown Age, Male, Routine		../.	M		
<1, Female, Targeted		P0Y--P1Y	F		
<1, Male, Targeted		P0Y--P1Y	M		
1-4, Female, Targeted		P1Y--P5Y	F		
1-4, Male, Targeted		P1Y--P5Y	M		
5-9, Female, Targeted		P5Y--P10Y	F		
5-9, Male, Targeted		P5Y--P10Y	M		
10-14, Female, Targeted		P10Y--P15Y	F		
10-14, Male, Targeted		P10Y--P15Y	M		

IHE Quality, Research and Public Health Technical Framework Supplement – Aggregate Data Exchange-HIV (ADX-HIV)

15-19, Female, Targeted	P15Y--P20Y	F	
15-19, Male, Targeted	P15Y--P20Y	M	
20-24, Female, Targeted	P20Y--P25Y	F	
20-24, Male, Targeted	P20Y--P25Y	M	
25-29, Female, Targeted	P25Y--P30Y	F	
25-29, Male, Targeted	P25Y--P30Y	M	
30-34, Female, Targeted	P30Y--P35Y	F	
30-34, Male, Targeted	P30Y--P35Y	M	
35-39, Female, Targeted	P35Y--P40Y	F	
35-39, Male, Targeted	P35Y--P40Y	M	
40-44, Female, Targeted	P40Y--P45Y	F	
40-44, Male, Targeted	P40Y--P45Y	M	
45-49, Female, Targeted	P45Y--P50Y	F	
45-49, Male, Targeted	P45Y--P50Y	M	
50+, Female, Targeted	P50Y--P9999Y	F	
50+, Male, Targeted	P50Y--P9999Y	M	
Unknown Age, Female, Targeted	../.	F	
Unknown Age, Male, Targeted	../.	M	
<1, Female, Not Documented	P0Y--P1Y	F	
<1, Male, Not Documented	P0Y--P1Y	M	
1-4, Female, Not Documented	P1Y--P5Y	F	
1-4, Male, Not Documented	P1Y--P5Y	M	
5-9, Female, Not Documented	P5Y--P10Y	F	
5-9, Male, Not Documented	P5Y--P10Y	M	
10-14, Female, Not Documented	P10Y--P15Y	F	
10-14, Male, Not Documented	P10Y--P15Y	M	
15-19, Female, Not Documented	P15Y--P20Y	F	
15-19, Male, Not Documented	P15Y--P20Y	M	
20-24, Female, Not Documented	P20Y--P25Y	F	
20-24, Male, Not Documented	P20Y--P25Y	M	
25-29, Female, Not Documented	P25Y--P30Y	F	
25-29, Male, Not Documented	P25Y--P30Y	M	
30-34, Female, Not Documented	P30Y--P35Y	F	
30-34, Male, Not Documented	P30Y--P35Y	M	
35-39, Female, Not Documented	P35Y--P40Y	F	
35-39, Male, Not Documented	P35Y--P40Y	M	
40-44, Female, Not Documented	P40Y--P45Y	F	
40-44, Male, Not Documented	P40Y--P45Y	M	
45-49, Female, Not Documented	P45Y--P50Y	F	
45-49, Male, Not Documented	P45Y--P50Y	M	

IHE Quality, Research and Public Health Technical Framework Supplement – Aggregate Data Exchange-HIV (ADX-HIV)

50+, Female, Not Documented	P50Y--P9999Y	F	
50+, Male, Not Documented	P50Y--P9999Y	M	
Unknown Age, Female, Not Documented	../.	F	
Unknown Age, Male, Not Documented	../.	M	
Disaggregate group(s)	Pregnant/Breastfeeding		
Pregnant, Routine			
Pregnant, Targeted			
Pregnant, Not Documented			
Breastfeeding, Routine			
Breastfeeding, Targeted			
Breastfeeding, Not Documented			