

Integrating the Healthcare Enterprise



5

IHE Patient Care Coordination Technical Framework Supplement

10

Dynamic Care Planning (DCP)

HL7[®] FHIR[®] STU 3

Using Resources at FMM Level 2-5

15

Rev 1.2 – Trial Implementation

20 Date: October 11, 2017
Author: PCC Technical Committee
Email: pcc@ihe.net

25

Please verify that you have the most recent version of this document. See [here](#) for Trial Implementation and Final Text versions and [here](#) for Public Comment versions.

Foreword

30 This is a supplement to the IHE Patient Care Coordination Technical Framework V11.0. Each supplement undergoes a process of public comment and trial implementation before being incorporated into the volumes of the Technical Frameworks.

This supplement is published on October 11, 2017 for trial implementation and may be available for testing at subsequent IHE Connectathons. The supplement may be amended based on the results of testing. Following successful testing it will be incorporated into the Patient Care
35 Coordination Technical Framework. Comments are invited and may be submitted at http://www.ihe.net/PCC_Public_Comments.

This supplement describes changes to the existing technical framework documents.

“Boxed” instructions like the sample below indicate to the Volume Editor how to integrate the relevant section(s) into the relevant Technical Framework volume.

40 *Amend Section X.X by the following:*

Where the amendment adds text, make the added text **bold underline**. Where the amendment removes text, make the removed text **~~bold strikethrough~~**. When entire new sections are added, introduce with editor’s instructions to “add new text” or similar, which for readability are not bolded or underlined.

45

General information about IHE can be found at <http://ihe.net>.

Information about the IHE Patient Care Coordination domain can be found at http://ihe.net/IHE_Domains.

50 Information about the organization of IHE Technical Frameworks and Supplements and the process used to create them can be found at http://ihe.net/IHE_Process and <http://ihe.net/Profiles>.

The current version of the IHE Patient Care Coordination Technical Framework can be found at http://ihe.net/Technical_Frameworks.

55 **CONTENTS**

	Introduction to this Supplement.....	6
	Open Issues and Questions	6
	Closed Issues	7
60	General Introduction	9
	Appendix A – Actor Summary Definitions	9
	Appendix B – Transaction Summary Definitions.....	9
	Glossary	9
	Volume 1 – Profiles	11
65	Copyright Licenses.....	11
	Domain-specific additions	11
	X Dynamic Care Planning (DCP) Profile.....	12
	X.1 DCP Actors, Transactions, and Content Modules.....	12
	X.1.1 Actor Descriptions and Actor Profile Requirements.....	14
70	X.1.1.1 Care Plan Contributor	14
	X.1.1.2 Care Plan Service.....	14
	X.2 DCP Actor Options	15
	X.2.1 Subscribe to Care Plan Updates	15
	X.3 DCP Required Actor Groupings	15
75	X.4 DCP Overview	15
	X.4.1 Concepts	16
	X.4.2 Use Case	17
	X.4.2.1 Use Case: Chronic Conditions.....	17
	X.4.2.1.1 Chronic Conditions Use Case Description	17
80	X.4.2.1.1.1 Encounter A: Primary Care Physician Initial Visit.....	18
	X.4.2.1.1.2 Encounter(s) B: Allied Health Care Providers and Specialists.....	19
	X.4.2.1.1.3 Encounter(s) C: ED Visit and Hospital Admission	23
	X.4.2.1.1.4 Encounter D: Primary Care Follow-up Visits.....	24
	X.5 DCP Security Considerations.....	25
85	X.6 DCP Cross Profile Considerations	25
	Appendices.....	26
	Volume 2 – Transactions	27
	3.37 Update Care Plan [PCC-37].....	27
	3.37.1 Scope	27
90	3.37.2 Actor Roles.....	27
	3.37.3 Referenced Standards.....	27
	3.37.4 Interaction Diagram.....	28
	3.37.4.1 Update Care Plan.....	28
	3.37.4.1.1 Trigger Events	28
95	3.37.4.1.2 Message Semantics.....	28
	3.37.4.1.3 Expected Actions	28

	3.37.4.2 Create Care Plan	29
	3.37.4.2.1 Trigger Events	29
	3.37.4.2.2 Message Semantics.....	29
100	3.37.4.2.3 Expected Actions	29
	3.37.5 Security Considerations.....	29
	3.38 Retrieve Care Plan [PCC-38].....	29
	3.38.1 Scope	29
	3.38.2 Actor Roles.....	30
105	3.38.3 Referenced Standards.....	30
	3.38.4 Interaction Diagram.....	30
	3.38.4.1 Retrieve Care Plan.....	30
	3.38.4.1.1 Trigger Events	31
	3.38.4.1.2 Message Semantics.....	31
110	3.38.4.1.3 Expected Actions	31
	3.38.5 Security Considerations.....	31
	3.39 Subscribe to Care Plan Updates [PCC-39].....	31
	3.39.1 Scope	31
	3.39.2 Actor Roles.....	31
115	3.39.3 Referenced Standards.....	32
	3.39.4 Interaction Diagram.....	32
	3.39.4.1 Subscribe to Care Plan Updates	32
	3.39.4.1.1 Trigger Events	32
	3.39.4.1.2 Message Semantics.....	33
120	3.39.4.1.3 Expected Actions	33
	3.39.4.2 Update Subscription to Care Plan Updates	33
	3.39.4.2.1 Trigger Events	33
	3.39.4.2.2 Message Semantics.....	33
	3.39.4.2.3 Expected Actions	34
125	3.39.5 Security Considerations.....	34
	3.40 Provide Care Plan [PCC-40].....	34
	3.40.1 Scope	34
	3.40.2 Actor Roles.....	34
	3.40.3 Referenced Standards.....	35
130	3.40.4 Interaction Diagram.....	35
	3.40.4.1 Provide Care Plan	35
	3.40.4.1.1 Trigger Events	35
	3.40.4.1.2 Message Semantics.....	35
	3.40.4.1.3 Expected Actions	35
135	3.40.5 Security Considerations.....	35
	3.41 Search for Care Plan [PCC-41].....	36
	3.41.1 Scope	36
	3.41.2 Actor Roles.....	36
	3.41.3 Referenced Standards.....	36

140	3.41.4 Interaction Diagram.....	37
	3.41.4.1 Search for Care Plan.....	37
	3.41.4.1.1 Trigger Events	37
	3.41.4.1.2 Message Semantics	37
	3.41.4.1.3 Expected Actions	37
145	3.41.5 Security Considerations.....	38
	Appendices.....	39
	Volume 2 Namespace Additions	39
	Volume 3 – Content Modules.....	40
	5 Namespaces and Vocabularies.....	40
150	6 Content Modules.....	41
	6.3.1 CDA® Content Modules.....	41
	6.6 HL7 FHIR Content Module	41
	6.6.1 Care Plan	41
	6.6.2 Subscription.....	44
155	Appendices.....	46
	Volume 3 Namespace Additions	46
	Volume 4 – National Extensions	47

160 **Introduction to this Supplement**

Whenever possible, IHE profiles are based on established and stable underlying standards. However, if an IHE committee determines that an emerging standard offers significant benefits for the use cases it is attempting to address and has a high likelihood of industry adoption, it may develop IHE profiles and related specifications based on such a standard.

The IHE committee will take care to update and republish the IHE profile in question as the underlying standard evolves. Updates to the profile or its underlying standards may necessitate changes to product implementations and site deployments in order for them to remain interoperable and conformant with the profile in question.

This DCP Profile uses the emerging HL7^{®1} FHIR^{®2} specification. The FHIR release profiled in this supplement is STU 3. HL7 describes the STU (Standard for Trial Use) standardization state at <https://www.hl7.org/fhir/versions.html>.

In addition, HL7 provides a rating of the maturity of FHIR content based on the FHIR Maturity Model (FMM): level 0 (draft) through 5 (normative ballot ready). The FHIR Maturity Model is described at <http://hl7.org/fhir/versions.html#maturity>.

Key FHIR STU 3 content, such as Resources or ValueSets, used in this profile, and their FMM levels are:

FHIR Resource Name	FMM Level
CarePlan	2
Subscription	3

165 The Dynamic Care Planning (DCP) Profile provides the structures and transactions for care planning and sharing Care Plans that meet the needs of many, such as providers, patients and payers. Care Plans can be dynamically updated as the patient interacts with the healthcare system. HL7 FHIR resources and transactions are used by this profile. This profile does not define, nor assume, a single Care Plan for a patient.

Open Issues and Questions

1. Care Plan Contributor vs. Care Plan Creator

¹ HL7 is the registered trademark of Health Level Seven International.

² FHIR is the registered trademark of Health Level Seven International.

- 170 2. Is an ATNA Grouping required? If so, how does that impact potential mobile uses of this profile?
3. When profiling the FHIR Resource make sure we can make references to existing documents. (4/25/16 – what / who is the source of this issue?)
4. Concepts from the Care Plan model, DAM or C-CDA, do not have clear mappings to the FHIR CarePlan resource.
- 175 5. The CarePlan resource includes `activity.actionResulting` – need understanding how this related to Care Plan concepts.
6. Differing "roles" on the Care Team will likely be needed. We should state in the open issues that representation of the Care Team is not well defined yet and still needs to be addressed.

180 **Closed Issues**

1. 2/15/16 Scope: This profile will not attempt to ‘discover’ all possible providers that have provided care for the patient. ...this means that information on the location of actors is not profiled and is obtained by methods outside of the scope of this profile (similar to how XDS actors know with whom they communicate).
- 185 2. (2/16/16) The Care Plan Contributor should use the following pattern, from <http://hl7.org/fhir/http.html#transactional-integrity>
- The server provides a read interaction for any resource it accepts update interactions on
 - Before updating, the client reads the latest version of the resource
 - 190 • The client applies the changes it wants to the resource, leaving other information intact (note the extension related rules around this)
 - The client writes the result back as an update interaction, and is able to handle a 409 or 412 response (usually by trying again)

195 If clients follow this pattern, then information from other systems that they do not understand will be maintained through the update.

Note that it's possible for a server to choose to maintain the information that would be lost, but there is no defined way for a server to determine whether the client omitted the information because it wasn't supported (perhaps in this case) or whether it wishes to delete the information.

- 200 3. (3/28/16) Does FHIR Search using POST create a resource when the search fails to match on the search criteria?
No, the search operation, indicated by `_search`, does not cause creation of content on the server.
4. (7/18/16) Should the FHIR CarePlan.subject be restricted to Patient?

- 205 a. What does CarePlan.subject of type Group mean?
In behavioral science where "Group" can be family, disaster victim/survivor group, defense or police force groups
Example: treatment of PTSD in these groups requires observation and management of group dynamics
- 210 In public health where "Group" can be family, community, residents of certain floors or entire building, airplane/cruise passenger cohort
Example: tracking, monitoring and managing communicable diseases outbreak in these groups
- 215 5. (closed 8/24/2017) Need to determine the FHIR version and what to do about future updates.
See Introduction to this Supplement section.
- 220 6. (closed on 2/15/16) This profile will not attempt to ‘discover’ all possible providers that have provided care for the patient. There are other means of discovering patient’s points of care such as state HIE services, Nationwide Health Information Network (NwHIN) and CommonWell Health Alliance. This profile will account for known providers that have provided care for the patient.
7. (closed 8/24/2017) The modeling of the Care Team is changing with newer versions of FHIR. How do we handle these changes?
See Introduction to this Supplement section.
- 225 8. (closed 7/18/16) Should the FHIR CarePlan.subject be restricted to Patient?
What does CarePlan.subject of type Group mean?
9. (closed 3/28/16) Does FHIR Search using POST create a resource when the search fails to match on the search criteria?
- 230

General Introduction

Update the following Appendices to the General Introduction as indicated below. Note that these are not appendices to Volume 1.

Appendix A – Actor Summary Definitions

235 *Add the following actors to the IHE Technical Frameworks General Introduction list of actors:*

Actor	Definition
Care Plan Contributor	This actor reads, creates and updates Care Plans hosted on a Care Plan Service.
Care Plan Service	This actor manages Care Plans received from Care Plan Contributors, and provides updated Care Plans to subscribed Care Plan Contributors.

Appendix B – Transaction Summary Definitions

240 *Add the following transactions to the IHE Technical Frameworks General Introduction list of Transactions:*

Transaction	Definition
Update Care Plan	Update an existing or create a new Care Plan
Retrieve Care Plan	Retrieve a Care Plan
Subscribe to Care Plan Updates	Subscribe to receive updated Care Plans for specific patients
Provide Care Plan	Provide updated Care Plans to subscribers
Search for Care Plan	Used to find a care plan

Glossary

Add the following glossary terms to the IHE Technical Frameworks General Introduction Glossary:

Glossary Term	Definition
Care Plan Domain Analysis Model	A common reference used to support the development of implementable care plan models ³
Coordination of Care Services Functional Model	Supports shared and coordinated care plans as well as support of multidisciplinary care team members to communicate changes resulting from care plan interventions and collaborate in removing barriers to care. ⁴

³ Care Plan Project - PCWG. (2015, November 5). Retrieved February 15, 2016, from http://wiki.hl7.org/index.php?title=Care_Plan_Project_-_PCWG
Care Plan Domain Analysis Model (DAM) Documents

⁴ Care Coordination Capabilities. (2014, February 8). Retrieved February 15, 2016, from http://wiki.hl7.org/index.php?title=Care_Coordination_Capabilities

IHE Patient Care Coordination Technical Framework Supplement – Dynamic Care Planning (DCP)

Glossary Term	Definition
Care Plan (as used in this profile)	Tool used by clinicians to plan and coordinate care for an individual patient. It aids in understanding and coordinating the actions that need to be performed for the target of care. The care plan is known by several similar and often interchangeable names such as the plan of care and treatment plan. ⁵

245

⁵ Care Plan Project - PCWG. (2015, November 5). Retrieved February 15, 2016, from http://wiki.hl7.org/index.php?title=Care_Plan_Project_-_PCWG

250

Volume 1 – Profiles

Copyright Licenses

NA

Add the following to the IHE Technical Frameworks General Introduction Copyright section:

255 Domain-specific additions

NA

Add Section X

X Dynamic Care Planning (DCP) Profile

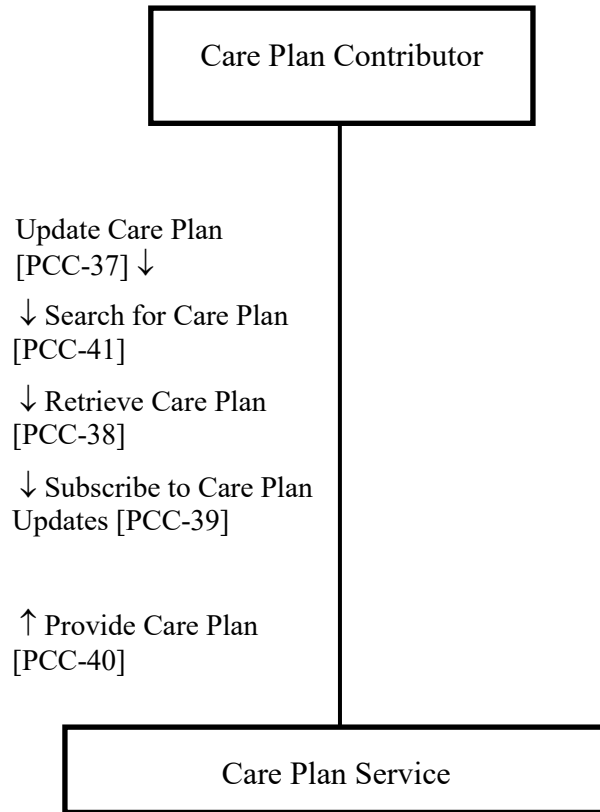
- 260 The Dynamic Care Planning (DCP) Profile provides the structures and transactions for care planning and sharing Care Plans that meet the needs of many, such as providers, patients and payers. Care Plans can be dynamically updated as the patient interacts with the healthcare system. HL7 FHIR resources and transactions are used by this profile. This profile does not define, nor assume, a single Care Plan for a patient.
- 265 Globally, the healthcare system is highly fragmented. Fragmentation can increase the number of hospital re-admissions. According to claims data reported for the Medicare beneficiaries in 2003-2004, 19.6% of re-hospitalizations occur within 30 days after discharge. This translated into \$17.4 billion dollars in hospital payments from Medicare in 2004.⁶
- 270 The numbers of service delivery encounters required by individuals as well as the failure to deliver and coordinate needed services, are significant sources of frustration and errors, and are drivers of health care expenditures. Providing person-centered care is particularly important for medically-complex and/or functionally impaired individuals given the complexity, range, and on-going and evolving nature of their health status and the services needed. Effective, collaborative partnerships between service providers and individuals are necessary to ensure that
- 275 individuals have the ability to participate in planning their care and that their wants, needs, and preferences are respected in health care decision making.
- 280 The ability to target appropriate services and to coordinate care over time, across multiple clinicians and sites of service, with the engagement of the individual (i.e., longitudinal coordination of care) is essential to alleviating fragmented, duplicative and costly care for these medically-complex and/or functionally impaired persons.

X.1 DCP Actors, Transactions, and Content Modules

This section defines the actors, transactions, and/or content modules in this profile. General definitions of actors are given in the Technical Frameworks General Introduction Appendix A at http://ihe.net/Technical_Frameworks.

- 285 Figure X.1-1 shows the actors directly involved in the DCP Profile and the relevant transactions between them. If needed for context, other actors that may be indirectly involved due to their participation in other related profiles are shown in dotted lines. Actors which have a mandatory grouping are shown in conjoined boxes.

⁶ Coleman, MD. MPH, Eric A. "Preparing Patients and Caregivers to Participate in Care Delivered Across Settings: The Care Transitions Intervention." *Journal of the American Geriatric Society* 52, (2004): 1817-1825.



290

Figure X.1-1: DCP Actor Diagram

Table X.1-1: DCP Profile - Actors and Transactions

Actors	Transactions	Optionality	Reference
Care Plan Contributor	Update Care Plan	R	PCC TF-2: 3.37
	Search for Care Plan	R	PCC TF-2: 3.41
	Retrieve Care Plan	R	PCC TF-2: 3.38
	Subscribe to Care Plan Updates	O	PCC TF-2: 3.39
	Provide Care Plan	O	PCC TF-2: 3.40
Care Plan Service	Search for Care Plan	R	PCC TF-2: 3.41
	Update Care Plan	R	PCC TF-2: 3.37
	Retrieve Care Plan	R	PCC TF-2: 3.38
	Subscribe to Care Plan Updates	R	PCC TF-2: 3.39

Actors	Transactions	Optionality	Reference
	Provide Care Plan	R (as initiator)	PCC TF-2: 3.40

295 Table X.1-1 lists the transactions for each actor directly involved in the DCP Profile. To claim compliance with this profile, an actor shall support all required transactions (labeled “R”) and may support the optional transactions (labeled “O”).

X.1.1 Actor Descriptions and Actor Profile Requirements

Most requirements are documented in Transactions (Volume 2) and Content Modules (Volume 3). This section documents any additional requirements on profile’s actors.

300 X.1.1.1 Care Plan Contributor

This actor reads, creates and updates Care Plans hosted by a Care Plan Service.

In order to ensure data integrity, as is necessary when multiple Care Plan Contributors are attempting to update to the same Care Plan, the Care Plan Contributor SHALL use the following pattern, (from <http://hl7.org/fhir/http.html#transactional-integrity>)

- 305
- Before updating, the Care Plan Contributor SHALL read the latest version of the Care Plan;
 - The Care Plan Contributor SHALL apply the changes (additions, updates, deletions) it wants to the Care Plan, leaving all other information intact;
 - The Care Plan Contributor SHALL write the Care Plan back as an update interaction, and
- 310 is able to handle a failure response, commonly due to other Contributor Updates (usually by trying again).

If a Care Plan Contributor follows this pattern, then information from other systems that they do not manage will be maintained through the update.

X.1.1.2 Care Plan Service

315 This actor manages Care Plans received from Care Plan Contributors, and provides updated Care Plans to subscribers.

As described above under the Care Plan Contributor, the Care Plan Service receives a Care Plan and manages versions of the Care Plan as a whole. Note – the Care Plan Service SHALL support versioning of the CarePlan resource.

320 The Care Plan Service SHALL support the delete interaction for the Subscription resource. See <http://hl7.org/fhir/http.html#delete>. This enables a Care Plan Contributor to unsubscribe from updates for a care plan.

X.2 DCP Actor Options

Options that may be selected for each actor in this profile, if any, are listed in Table X.2-1. Dependencies between options when applicable are specified in notes.

Table X.2-1: DCP - Actors and Options

Actor	Option Name	Reference
Care Plan Contributor	Subscribe to Care Plan Updates	3.Y.3
Care Plan Service	No options defined	--

X.2.1 Subscribe to Care Plan Updates

Support for this Subscribe to Care Plan Updates means that the optional Subscribe to Care Plan Updates [PCC-39] and the optional Provide Care Plan [PCC-40] are both supported.

The alternative to subscribing to care plan updates is a polling process, where a Care Plan Contributor would periodically query for a CarePlan resource history and determine that a Retrieve Care Plan was necessary.

X.3 DCP Required Actor Groupings

Table X.3-1: DCP - Required Actor Groupings

DCP Actor	Actor to be grouped with	Reference	Content Bindings Reference
Care Plan Contributor	none		
Care Plan Service	none		--

X.4 DCP Overview

Care planning is needed to manage medically complex and/or functionally impaired individuals as they interact with the health care system. Often, these individuals require real time coordination of the care as they receive care from multiple care providers and care settings. HL7 Care Plan Domain Analysis Model depicts the care plan as a tool used by clinicians to plan and coordinate care⁷. Effective care planning and care coordination for patient with complex health problems and needs are needed throughout the world. Both the European Union and the United

⁷ Care Plan Domain Analysis Model. (May 2016). Retrieved September 20, 2017, from http://www.hl7.org/implement/standards/product_brief.cfm?product_id=435

345 States are currently working to encourage more effective use of information and communication technology to support the delivery of health services. This has led to the promotion of interoperability of health information and communication technology products and services.⁸

350 In the United States, providers and payers are interested in ensuring that patients are receiving effective and efficient care. The Medicare and Medicaid EHR incentive programs provide financial incentives to care providers for the meaningful use of certified EHR technology that supports care coordination⁹. According to the United States Office of the National Coordinator for Health Information Technology’s Connecting Health and Care for the Nation Shared Nationwide Interoperability Roadmap, “Providers also play a critical role in coordinating care with other providers in support of patients. However, coordinating care and engaging with multi-disciplinary, cross-organization care, support and service teams has been incredibly difficult with
355 the tools available today. Technology that does not facilitate the sharing and use of electronic health information that providers need, when they need it, which often creates additional challenges to care coordination. Additionally, care coordination via electronic means requires workflow changes for providers and their staff, particularly to close referral loops and ensure all of an individual’s health information is available to the entire care, support and services team.
360 These workflow changes are not insignificant and must be overcome in order to enable interoperability.”¹⁰

This profile depicts how multiple care plans can be shared and used to plan and coordinate care.

X.4.1 Concepts

365 Care plans have many different meanings to many different people. Each discipline has its own definition of what a care plan is and what it contains. Dynamic care planning expands the concept of care planning from being only discipline specific to an interdisciplinary process where all disciplines that care for the patient are able to share their plans of care, treatment plans, health issues, interventions and goals/outcomes, etc. for the patient. For a view of the Shared Care Planning process, see
370 ftp://ftp.ihe.net/TF_Implementation_Material/PCC/DCP/Use%20Case%20Dynamic%20Care%20Planning%20Diagram.pptx

As identified in the IHE PCC Nursing White Paper to Advocate the Uptake of Patient Plan of Care and eNursing Summary Profiles July 2012, each clinical discipline’s plan of care or treatment plan should be incorporated into one overarching central Care Plan for the patient.

⁸ Transatlantic eHealth/health IT Cooperation Roadmap. (2015, November). Retrieved February 12, 2016, from https://www.healthit.gov/sites/default/files/eu-us-roadmap_final_nov2015_consultationversion.pdf

⁹ Health IT Regulations: Meaningful Use Regulations. (2015, March 20). Retrieved February 12, 2016, from <https://www.healthit.gov/policy-researchers-implementers/meaningful-use-regulations>

¹⁰ Connecting Health and Care for the Nation A Shared Nationwide Interoperability Roadmap. (2015, December 22). Retrieved February 12, 2016, from <https://www.healthit.gov/sites/default/files/hie-interoperability/nationwide-interoperability-roadmap-final-version-1.0.pdf>

375 In environments where there is no centralized care plan, this profile enables care team members to share the details of their specific care plans with other providers to coordinate care. For example, a payer or provider might share a care plan they have for a patient with the provider who is caring for them, or the payer who is covering the care of the patient using this profile, without any assumption that there is a centrally managed singular care plan for the patient.

380 **X.4.2 Use Case**

This profile reuses the HL7 Care Plan Domain Analysis Model specification storyboard 2: Chronic Conditions¹¹ with permission from HL7 Patient Care Work Group. The storyboard includes chronic disease management as well as a transition of care episode.

For the purpose of IHE profiling, the storyboard is being referred to as a use case.

385 **X.4.2.1 Use Case: Chronic Conditions**

The use case provides narrative description of clinical scenarios where the care plan is accessed, updated or used during care provision. For a process flow diagram of this entire use case, see the diagram at:

390 ftp://ftp.ihe.net/TF_Implementation_Material/PCC/DCP/DynamicCarePlanningFlow_chronicCondition.vsd

X.4.2.1.1 Chronic Conditions Use Case Description

The purpose of the HL7 chronic conditions care plan storyboard (use case) is to illustrate the communication flow and documentation of a care plan between a patient, his or her primary care provider, ancillary providers and specialists involved in the care and treatment of a case of Type II Diabetes Mellitus. It consists of four types of encounters (although in reality there could be many more encounters) which also include an episode of care in which transition of care occurs. The following encounters are depicted:

- Encounter A: Primary Care Physician Initial Visit
- Encounter(s) B: Allied Health Care Provider Visits/Specialist Visits
- 400 • Encounter(s) C: ED Visit with hospital admission (inpatient stay)
- Encounter D: Primary Care Follow-up post hospital discharge Visit

The use case contains the following actors and roles.

- Primary Care Physician: Dr. Patricia Primary
- Patient: Mr. Bob Anyman
- 405 • Diabetic Educator: Ms. Edith Teaching

¹¹ HL7 Care Plan Domain Analysis Model specification retrieved from http://www.hl7.org/implement/standards/product_brief.cfm?product_id=435

- Dietitian/Nutritionist: Ms. Debbie Nutrition
- Exercise Physiologist: Mr. Ed Active
- Pharmacist: Ms. Susan Script
- Optometrist: Dr. Victor Vision
- 410 • Podiatrist: Dr. Barry Bunion
- Psychologist: Dr. Larry Listener
- Emergency Department Physician: Dr. Eddie Emergent
- Hospital Attending Physician: Dr. Allen Attend

X.4.2.1.1.1 Encounter A: Primary Care Physician Initial Visit

415 **Pre-conditions:** Patient Mr. Bob Anyman attends his primary care physician (PCP) clinic because he has been feeling generally unwell in the past 7-8 months. His recent blood test results reveal abnormal glucose challenge test profile.

420 **Description of Encounter:** Dr. Patricia Primary reviews Mr. Anyman’s medical history, presenting complaints and the oral glucose tolerance test results and concludes the patient suffers from Type II Diabetes Mellitus (Type II DM). Dr. Primary accesses Mr. Anyman’s medical record, and records the clinical assessment findings and the diagnosis.

425 Dr. Primary discusses with Mr. Anyman the identified problems, potential risks, goals, management strategies and intended outcomes. After ensuring that these are understood by the patient, Dr. Primary begins to draw up a customized chronic condition (Type II DM) care plan based on a standardized multi-disciplinary Type II DM care plan adopted for use by her practice. Agreed goals and scheduled activities specific for the care of Mr. Anyman are entered into the care plan.

430 Dr. Primary also discusses with the patient the importance of good nutrition and medication management and exercise in achieving good control of the disease, as well as the criticality of good skin/foot care and eye care to prevent complications. Scheduling of consultations with diabetic educator, dietitian, exercise physiologist, community pharmacist, optometrist, and podiatrist (allied health care providers) is discussed and agreed to by the patient. The frequency of visit to allied health care providers is scheduled according to the national professional recommendation for collaborative diabetes care. Dr. Primary also notices signs and symptoms of mood changes in the patient after the diagnosis is made. She recommends that the patient may benefit from seeing a clinical psychologist to which the patient also agrees.

440 Dr. Primary generates a set of referrals to these allied health care providers. The referrals contain information about the patient’s medical history including the recent diagnosis of Type II diabetes, reasons for referral, requested services and supporting clinical information such as any relevant clinical assessment findings including test results. A copy of the care plan agreed to by the patient is made available with the referral.

Post Condition: Once the care plan is completed, it is committed to the patient’s medical record. The patient is offered a copy of the plan.

445 A number of referrals in the form of notification/request for services together with the care plan are made available to the relevant health care providers.

The patient is advised to follow the referral practice/protocol specific to the local health care system or insurance plan. For the first appointment, the patient may wait for scheduled appointments from the relevant health care providers to whom referral/request for services have been made, or may be able to schedule his own appointment using booking systems of the specialist or allied health providers.

450

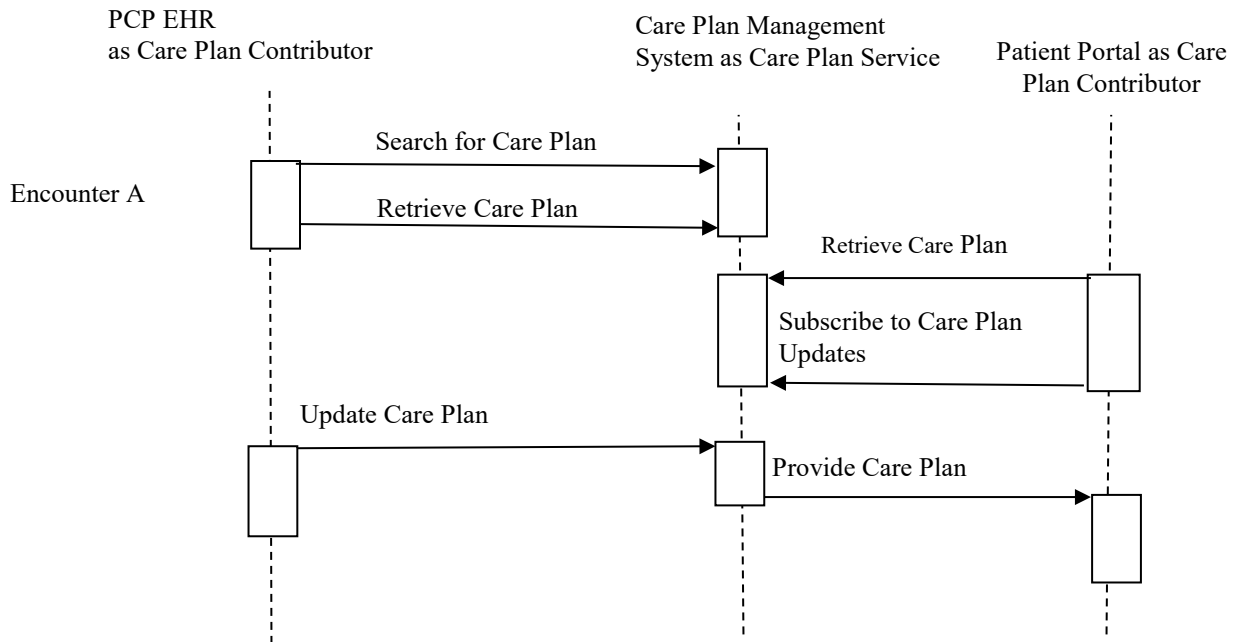


Figure X.4.2.1.1.1-1: Encounter A: Basic Process Flow in DCP Profile

X.4.2.1.1.2 Encounter(s) B: Allied Health Care Providers and Specialists

455 **Pre-conditions:** Mr. Anyman’s allied health care providers and specialists have received a referral with copy of care plan from Dr. Patricia Primary.

The allied health care providers and specialists have accepted the referral and scheduled a first visit with the patient – Mr. Bob Anyman.

460 The case has been assigned to the following individual allied health care providers and referrals made to the applicable specialists:

- A. Ms. Edith Teaching (Diabetic Educator) for development and implementation of comprehensive diabetic education program and plan to ensure that the patient understands the nature of the disease, the problem, potential complications and how best to manage the condition and prevention of potential complications.
- 465 B. Ms. Debbie Nutrition (Dietitian/Nutritionist) for development and implementation of a nutrition care plan for diabetes to ensure effective stabilization of the blood glucose level with the help of effective diet control.
- C. Mr. Ed Active (Exercise Physiologist) for development and implementation of an exercise regime.
- 470 D. In certain countries (e.g., Australia), the community pharmacist (Ms. Susan Script) provides patient with education on diabetic medications prescribed for the patient by Dr. Primary, and development and implementation of an effective and safe medication management program. The objectives are to gain and maintain effective control of the condition and to prevent hypo- and hyper- glycemc episodes.
- 475 E. Dr. Larry Listener (clinical psychologist) for counseling and to develop and implement an emotional support program; this includes a plan to reduce the impact of emotional stress brought about by the newly diagnosed condition and to improve the patient’s psychological well-being. The plan may include enrolling patient in diabetic support group.
- 480 F. Dr. Victor Vision (Optometrist) for regular (e.g., 6 monthly) visual and retinal screening and to educate patient on the eye care and how best to prevent/minimize the risks of ocular complications.
- G. Dr. Barry Bunion (Podiatrist) for education on the risks of foot complications and to develop and implement an effective foot care program including regular self-assessment, 485 care of the feet and follow-up visits.

Description of Encounter: The patient is registered at the allied health care provider/specialist’s reception. Any additional or new information provided by the patient is recorded in the health care record system operated by the allied health provider clinic.

490 During the first consultation, the allied health care provider/specialist reviews the referral and care plan provided by Dr. Primary.

During subsequent consultation, the allied health care provider/specialist reviews the patient’s health care record and most recent care plan of the patient.

495 At each consultation, the allied health care provider reviews the patient’s health record, assesses the patient, checks the progress and any risks of non-adherence (compliance) and complications, and discusses the outcomes of the management strategies and/or risks. Any difficulties in following the management strategies or activities by the patient are discussed. Any new/ revised goals and timing, new intervention and self-care activities are discussed and agreed to by the patient. The new/changed activities are scheduled and target dates agreed upon.

500 The allied health care provider updates the clinical notes and the care plan with the assessment details, and any changes to the management plan including new advice to the patient. The date of next visit is also determined.

Table X.4.2.1.1.2-1: Allied Health Professionals/Specialists Encounters – Activities and Outcomes

Provider / Allied Health Provider	Encounter Activities	Outcomes	Communications
Diabetic Educator	Review referral/patient progress assess learning needs and strategy discuss and finalize education plan	Develop/update education plan Update clinical notes Generate progress notes	New/updated education plan to patient Summary care plan and progress note shared with primary care provider and other care providers,
Dietitian/Nutritionist	Review referral/patient progress Assess diet management needs and strategies Discuss and finalize diet management plan	Develop/update diet plan Weight assessment; Exercise plan Diet management plan; Referral to educator and exercise therapy if necessary Update clinical notes Generate progress notes	New/updated care plan to patient Summary care plan and progress note shared with primary care provider and other care providers, e.g., diabetic educator, exercise physiologist, etc.
Exercise Physiologist	Review referral/patient progress Assess exercise/activity needs and strategies Discuss and finalize exercise plan	Develop/update exercise plan: Weight assessment; exercise plan Update clinical notes Generate progress notes	New/updated exercise plan to patient Summary care plan and progress note shared with primary care provider and other care providers, e.g., diabetic educator, dietitian, etc.
Community Pharmacist	Review patient medication profile Assess medication management (education, conformance, etc.) needs and strategies Discuss and finalize medication management plan	Develop/update medication management plan: patient current medication list assessment result; recommendation on meds management; referral to other provider(s) if necessary dispense record on dispensed meds Update clinical notes Generate progress notes	New/updated medication management plan to patient Summary care plan and progress note shared with primary care provider and to other care providers, e.g., diabetic educator, dietitian, etc.

IHE Patient Care Coordination Technical Framework Supplement – Dynamic Care Planning (DCP)

Provider / Allied Health Provider	Encounter Activities	Outcomes	Communications
Clinical Psychologist	Review referral/patient progress Assess emotional status, coping mechanisms and strategies Discuss and finalize psychological management plan	Develop/update psychological management plan: Emotion assessment; Psychotherapy session plan Update clinical notes Generate progress notes	New/updated psychological management plan to patient Summary care plan and progress note shared with primary care provider and other care providers, e.g., diabetic educator, dietitian, etc.
Optometrist	Review referral/patient progress Assess eye care needs and strategies Discuss and finalize eye care plan	Develop/update eye care plan: Regular eye checks for early detection of Diabetic retinopathy (1 yearly to 2 yearly depending on national protocol and how advanced is DM) Stop smoking (prevent smoking related damage to eye cells) Wear sun glasses when in sun (prevent UV accelerating eye damage) – dispense prescription sun glasses if necessary; Referral to Dietitian/Nutritionist for counseling on diet rich in fruits and green leafy veg and Omega 3 fats along with effective weight control Update clinical notes Generate progress notes	New/updated eye care plan to patient Summary care plan and progress note shared with primary care provider and other care providers, e.g., diabetic educator, dietitian, etc.
Podiatrist	Review referral/patient progress Assess foot care needs and strategies Discuss and finalize foot care plan	Develop/update foot care plan Foot assessment Foot care plan Update clinical notes Generate progress notes	New/updated foot care plan to patient Summary care plan and progress note shared with primary care provider and other care providers, e.g., diabetic educator, dietitian, pharmacist, etc.

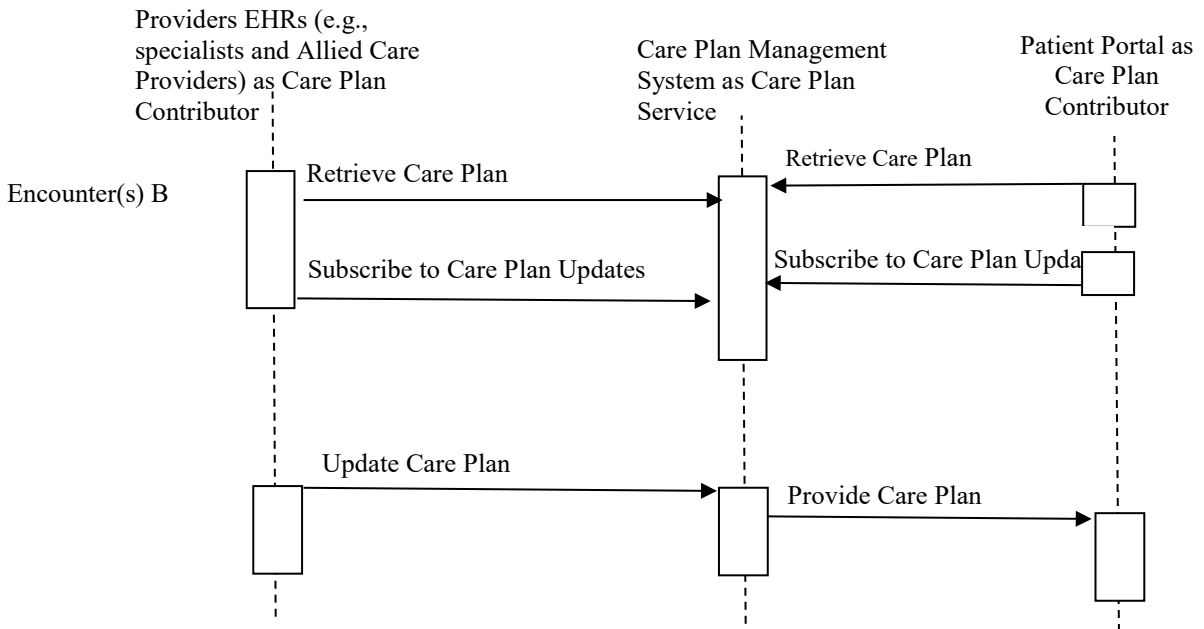
505 **Post Condition:** An updated allied health domain specific care plan complete with action items and target dates is completed with patient agreement.

The patient is provided a copy of the new/updated care plan at the end of each allied health/specialist consultation.

510 Updates to the care plan are supported by workflow, where for example at the end of each consultation a progress note is written by the allied health provider/specialist which documents the outcomes of the assessment, any new risks identified and changes to or new management strategies that have been included in the updated care plan. This allied health domain specific

progress note is shared with the patient’s primary care provider, Dr. Primary. Any care coordination responsibilities required of Dr. Primary is also communicated.

515 The progress note may also be shared with any other allied health care provider(s) who may need to be informed about changes in risks, goals, and management plan that are relevant to the ongoing management of the patient. For example, a progress note from a dietitian/nutritionist may contain clinical information that may need to be considered by the diabetic educator.



520

Figure X.4.2.1.1.2-1: Encounter(s) B: Basic Process Flow in DCP Profile

X.4.2.1.1.3 Encounter(s) C: ED Visit and Hospital Admission

525 **Pre-Condition:** Mr. Bob Anyman took a 3-month holiday in Australia during the southern hemisphere spring season, missed the influenza immunization window in his northern hemisphere home country, and forgot about the immunization after he returned home. He develops a severe episode of influenza with broncho-pneumonia and very high blood glucose level (spot BSL = 23 mM) as complications. He suffers from increasing shortness of breath on a Saturday afternoon.

530 Mr. Anyman presents himself at the emergency department of his local hospital as Dr. Primary’s clinic is closed over the weekend.

Description of Encounter: Mr. Anyman is admitted to the hospital and placed under the care of physicians from the general medicine clinical unit.

535 During the hospitalization, the patient is given a course of IV antibiotics and insulin injections to stabilize the blood glucose level. The patient was assessed by the hospital attending physician, Dr. Allen Attend, as medically fit for discharge after four days of inpatient care. Dr. Attend reconciles the medication treatment during inpatient care, creates a discharge medication list, outlines follow up information and discusses post discharge care with the patient. He
540 recommends the patient to consider receiving influenza immunization before the next influenza session and updates this as recommendation to Dr. Primary in the patient’s discharge plan.

Planning for discharge is initiated by the physician and the nurse assigned to care for the patient soon after admission as per hospital discharge planning protocol. The discharge plan is finalized on the day of discharge and a discharge summary is generated.

545 **Post Condition:** The patient’s discharge care plan is completed. This plan may include information on changes to medications, management recommendations to the patient’s primary care provider and the patient, and any health care services that are requested or scheduled.

The patient is given a copy of the discharge summary that includes the discharge care plan.

A discharge summary and the discharge care plan are shared with the patient’s primary care provider, Dr. Primary with recommendation for pre-influenza season immunization.

550 Note: The process flow pattern for this encounter is the same as encounter(s) B. See Figure X.4.2.1.1.2-1.

X.4.2.1.1.4 Encounter D: Primary Care Follow-up Visits

Pre-Condition: Patient Mr. Bob Anyman is scheduled for a post-hospital discharge consultation with his primary care provider, Dr. Primary.

Mr. Anyman is seen by Dr. Primary at her clinic on the day of appointment.

555 The discharge summary information from the hospital is incorporated into the patient’s medical record and is ready for Dr. Primary to review at the consultation.

560 **Description of Encounter:** Primary Care Physician Dr. Patricia Primary reviews patient Mr. Anyman’s hospital discharge summary and discusses the pre-influenza season immunization recommendation with the patient. The patient agrees with the recommendation. The care plan is updated.

Dr. Primary notices that the patient has gained extra weight and the blood sugar level has not quite stabilized after discharge from hospital. Dr. Primary reviews the care plan and discusses with patient the plan to change the diet and medication. Patient agrees. The care plan is updated.

565 Dr. Primary issues a new prescription to the patient, and asks the patient to make an early appointment to see the dietitian to discuss new nutrition management strategy and plan.

Dr. Primary generates progress notes with nutrition management and exercise change recommendations are generated by Dr. Primary and shared with the patient’s dietitian. The care plan is updated and shared with relevant allied health providers.

570 Dr. Primary changes patient’s follow-up visits from four monthly to two monthly for the next two appointments with the aim to review the follow-up frequency after that.

Post Condition: A new prescription is shared with the patient’s community pharmacy. Ms. Script will discuss the new medication management plan with the patient when he goes to pick up his medications.

575 The patient also makes an early appointment to see the dietitian and exercise physiologist. A copy of progress notes from Dr. Primary will be made available to the dietitian and exercise physiologist before the scheduled appointment.

Patient gets a copy of the updated care plan, and a copy of the plan is also shared with relevant allied health providers.

Note: The process flow pattern for this encounter is the same as encounter A. See Figure X.4.2.1.1.1-1.

580 **X.5 DCP Security Considerations**

See [ITI TF-2.x Appendix Z.8](#) “Mobile Security Considerations”

X.6 DCP Cross Profile Considerations

585 A Content Consumer in Patient Care Coordination might be grouped with a Care Plan Contributor to enable the filtering and display of Care Plan content. A Content Creator might be grouped with a Care Plan Contributor to enable the creation or update of clinical content. A Reconciliation Agent might be grouped with a Care Plan Contributor and also with a Care Plan Contributor to facilitate the reconciliation processes. As mentioned in the security considerations section, a Secure Node in the ATNA Profile might be grouped with any and all of the actors in this profile.

590

Appendices

None

Volume 2 – Transactions

595 *Add Section 3.37*

3.37 Update Care Plan [PCC-37]

3.37.1 Scope

This transaction is used to update or to create a care plan. A CarePlan resource is submitted to a Care Plan Service where the update or creation is handled.

600 **3.37.2 Actor Roles**

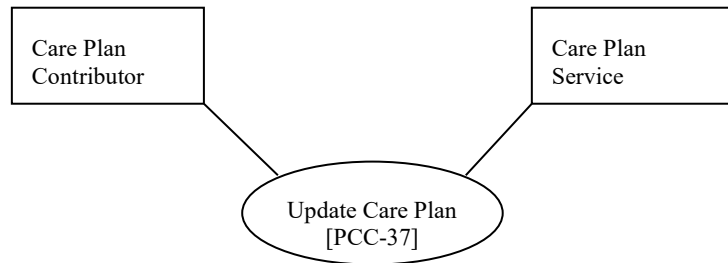


Figure 3.Y.2-1: Use Case Diagram

Table 3.Y.2-1: Actor Roles

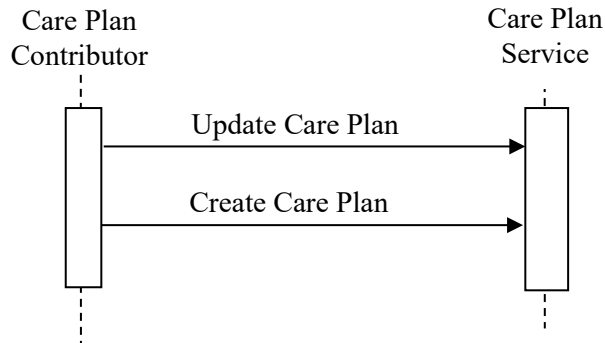
Actor:	Care Plan Contributor
Role:	The Care Plan Contributor submits a care plan that is updated, or needs to be created.
Actor:	Care Plan Service
Role:	The Care Plan Service receives submitted care plans for management as per FHIR Resource Integrity management.

605

3.37.3 Referenced Standards

HL7 FHIR standard STU 3

3.37.4 Interaction Diagram



610 3.37.4.1 Update Care Plan

The Care Plan Contributor submits a care plan that has been edited to a Care Plan Service. The Care Plan Service handles the FHIR CarePlan Resource according to FHIR Resource integrity.

3.37.4.1.1 Trigger Events

615 An existing care plan has been edited, and the set of activity for the care plan are to be committed to a Care Plan Service.

3.37.4.1.2 Message Semantics

This is an HTTP or HTTPS PUT of a CarePlan resource, as constrained by this profile.

The base URL for this is: [base]/CarePlan/[id]

Where the body of the transaction contains the CarePlan resource.

620 See: <http://hl7.org/fhir/http.html#update>

3.37.4.1.3 Expected Actions

When updating an existing care plan, the Care Plan Contributor shall merge changes into a recently received CarePlan, leaving unchanged content unaltered.

625 If the Care Plan Service returns an error to the Update Care Plan transaction, as would happen if the version of the CarePlan is old, then the Care Plan Contributor should perform the steps of Retrieve Care Plan, merge changes, and then attempt Update Care Plan again. For example, two providers retrieved copies of a care plan, one after another, and then attempt to update the care plan later.

630 Since the Care Plan Service SHALL support versioning of the CarePlan resources, the response SHALL contain meta.versionId. See <http://hl7.org/fhir/http.html#create> details on the response from the Care Plan Service.

3.37.4.2 Create Care Plan

The Care Plan Contributor submits a newly created care plan to a Care Plan Service.

3.37.4.2.1 Trigger Events

635 Newly created care plan content is ready to be saved to a Care Plan Service.

3.37.4.2.2 Message Semantics

This is an HTTP or HTTPS POST of a CarePlan resource, as constrained by this profile.

The base URL for this is: [base]/CarePlan

Where the body of the transaction contains the CarePlan resource.

640 See <http://hl7.org/fhir/http.html#create>.

3.37.4.2.3 Expected Actions

The Care Plan Service responds, with success or error, as defined by the FHIR RESTful create interaction. See <http://hl7.org/fhir/http.html#create>.

3.37.5 Security Considerations

645 See Section X.5 DCP Security Considerations

3.38 Retrieve Care Plan [PCC-38]

3.38.1 Scope

This transaction is used to retrieve a specific care plan using a known FHIR CarePlan resource id.

650

3.38.2 Actor Roles

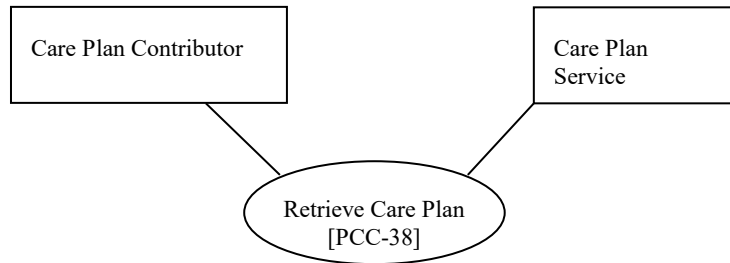


Figure 3.38.2-1: Use Case Diagram

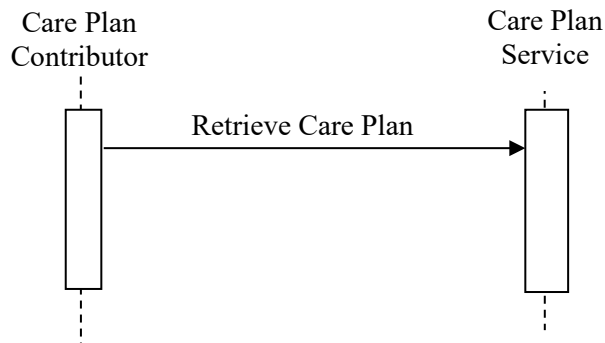
Table 3.38.2-1: Actor Roles

Actor:	Care Plan Contributor
Role:	The Care Plan Contributor requests a specific care plan using the CarePlan id
Actor:	Care Plan Service
Role:	The Care Plan Service returns the requested CarePlan resource, or an error if the requested id does not exist.

655 **3.38.3 Referenced Standards**

HL7 FHIR standard release 3 (STU)

3.38.4 Interaction Diagram



3.38.4.1 Retrieve Care Plan

660 The Care Plan Contributor retrieves a specific care plan from the Care Plan Service.

3.38.4.1.1 Trigger Events

Any time a specific care plan needs to be retrieved, for the purposes of viewing or in conjunction with the preparation for an update to a care plan.

3.38.4.1.2 Message Semantics

665 The message is a FHIR HTTP or HTTPS GET of a CarePlan resources where the parameter provided is the CarePlan.id with an option to ask for a specific version of the given CarePlan

The URL for this operation is: [base]/CarePlan/[id]

or, if this is an historical, version specific retrieval: [base]/CarePlan/[id]/_history/[vid]

3.38.4.1.3 Expected Actions

670 The Care Plan Contributor initiates the retrieve request using HTTP or HTTPS GET, and the Care Plan Service responds according to the FHIR GET specification with the requested care plan or an error message. See <http://hl7.org/fhir/http.html#read>.

3.38.5 Security Considerations

See Section X.5 DCP Security Considerations.

675 3.39 Subscribe to Care Plan Updates [PCC-39]

3.39.1 Scope

This transaction is used to subscribe to updates made to a Care Plan. As noted in TF-1:X-1.1.3, the Care Plan Service SHALL support RESTful delete, as well as the following messages for creating and updating a Subscription.

680 3.39.2 Actor Roles

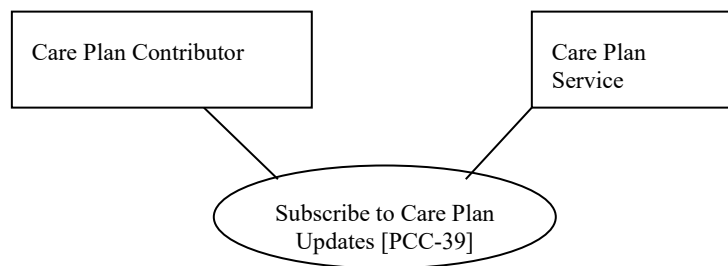


Figure 3.39.2-1: Use Case Diagram

Table 3.39.2-1: Actor Roles

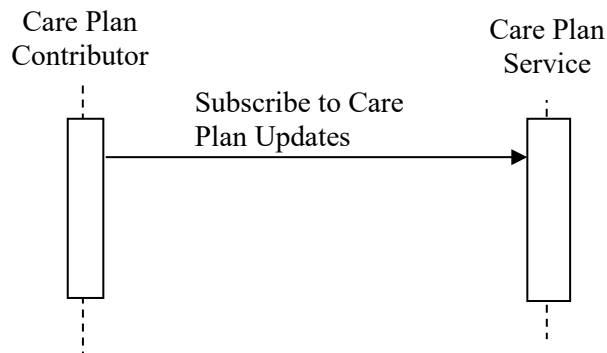
Actor:	Care Plan Contributor
---------------	-----------------------

Role:	The Care Plan Contributor subscribes to updates based upon changes to a CarePlan resource.
Actor:	Care Plan Service
Role:	The Care Plan Service evaluates the involved resources of the Subscription and uses the defined channel to notify a Care Plan Contributor about changes.

685 **3.39.3 Referenced Standards**

HL7 FHIR standard release 3 (STU)

3.39.4 Interaction Diagram



3.39.4.1 Subscribe to Care Plan Updates

690 A Care Plan Contributor may choose to receive updates as CarePlan resources are changed by using the Subscribe to Care Plan Updates transaction.

When the criteria of a subscription request are satisfied, the Care Plan Service sends the entire Care Plan resource, using the Provide Care Plan [PCC-40] transaction to the subscribing Care Plan Contributor.

695 **3.39.4.1.1 Trigger Events**

Subscribing to Care Plan Updates is a business and workflow decision, and the use of this is optional in the DCP Profile.

The Subscription criteria, used to trigger updates, may be simple or complex.

700 A simple Subscription criteria includes only query parameters about a CarePlan resource, such as the id. A simple Subscription criteria results in notifications of changes to the CarePlan resource

itself, but the subscription update would not be triggered by changes to a resource referenced by the care plan.

705 A complex Subscription criteria contains chained parameters, such as parameters about resources that are referenced within the CarePlan. For example, chaining parameters about a goal referenced from a CarePlan results in notifications of changes to either the CarePlan or to the referenced goal.

3.39.4.1.2 Message Semantics

This is an HTTP or HTTPS POST of a Subscription resource, as constrained by this profile.

The base URL for this is: [base]/Subscription

710 Where the body of the transaction contains the Subscription resource.

See <http://hl7.org/fhir/subscription.html>.

3.39.4.1.3 Expected Actions

The Care Plan Contributor shall check the response from the Care Plan Service. See <http://hl7.org/fhir/http.html#create> for details.

715 The Care Plan Service shall check that the Subscription resource meets the constraints defined by this profile, in PCC TF-3: 6.6.2.

When a Subscription resource is accepted, the Care Plan Service sets the status to “requested” and returns in the Location header the Subscription’s logical id for use in future operations. This logical id shall be saved by the Care Plan Contributor.

720 A Subscription may be rejected by the Care Plan Service for a number of reasons, such as if the Subscription is incomplete or does not meet the requirements of this profile as in PCC TF-3: 6.6.2

As per FHIR POST protocol, a rejected transaction results in the return of a 406 – rejected HTTP response.

725 3.39.4.2 Update Subscription to Care Plan Updates

An existing subscription may be updated by a Care Plan Contributor, for example to refine the search criteria.

3.39.4.2.1 Trigger Events

An existing subscription needs to be updated.

730 3.39.4.2.2 Message Semantics

This is an HTTP or HTTPS PUT of a Subscription resource, as constrained by this profile.

The base URL for this is: [base]/Subscription/[id]

Where the body of the transaction contains the Subscription resource.

See <http://hl7.org/fhir/http.html#update>.

735 **3.39.4.2.3 Expected Actions**

See <http://hl7.org/fhir/http.html#update>.

3.39.5 Security Considerations

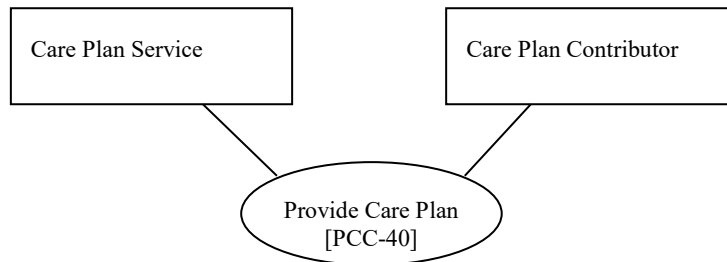
See X.5 DCP Security Considerations

3.40 Provide Care Plan [PCC-40]

740 **3.40.1 Scope**

This transaction is used to provide an updated CarePlan resource to a Care Plan Contributor that has subscribed to updates.

3.40.2 Actor Roles



745

Figure 3.40.2-1: Use Case Diagram

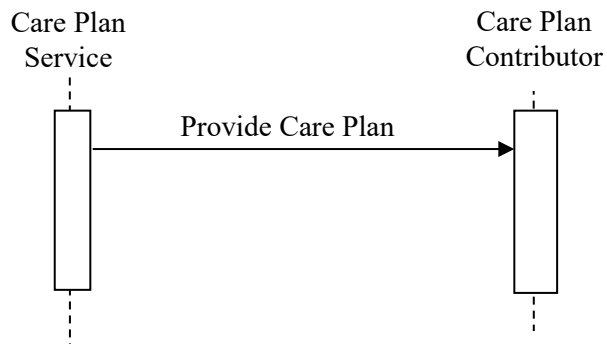
Table 3.40.2-1: Actor Roles

Actor:	Care Plan Service
Role:	The Care Plan Service provides updated CarePlan resources to subscribed Care Plan Contributors.
Actor:	Care Plan Contributor
Role:	The Care Plan Contributor that has subscribed to care plan updates receives updates of changed CarePlan resources.

3.40.3 Referenced Standards

750 HL7 FHIR standard release 3 (STU)

3.40.4 Interaction Diagram



3.40.4.1 Provide Care Plan

755 The Care Plan Service sends a CarePlan resource to the endpoint specified in the Subscription resource.

3.40.4.1.1 Trigger Events

A change to a resource causes a Subscription Criteria to evaluate as true, so the Care Plan Service sends the updated CarePlan resource to the designated endpoint.

3.40.4.1.2 Message Semantics

760 This is an HTTP or HTTPS POST of a CarePlan resource, as constrained by this profile.

The base URL for this is specified in the registered Subscription resource.

Where the body of the transaction contains the CarePlan resource.

See <http://hl7.org/fhir/subscription.html>.

3.40.4.1.3 Expected Actions

765 The Care Plan Contributor receives the CarePlan resource in the body of the POST.

3.40.5 Security Considerations

See X.5 DCP Security Considerations

3.41 Search for Care Plan [PCC-41]

3.41.1 Scope

770 This transaction is used to find a care plan. The Care Plan Contributor searches for a care plan of interest. A care plan located by search may then be retrieved for viewing or updating.

3.41.2 Actor Roles

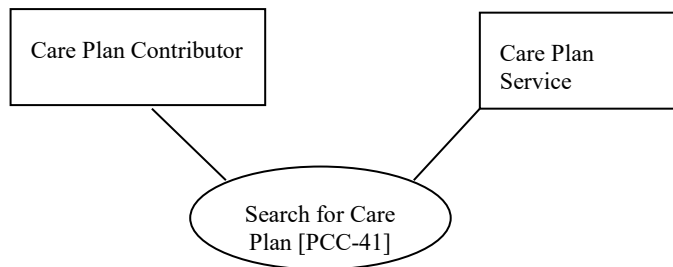


Figure 3.41.2-1: Use Case Diagram

775

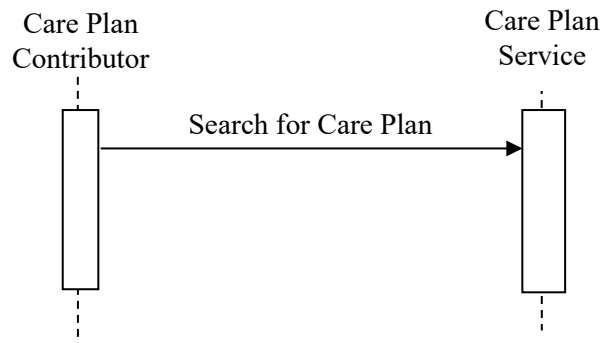
Table 3.41.2-1: Actor Roles

Actor:	Care Plan Contributor
Role:	The Care Plan Contributor initiates Search for Care Plan in order to locate a care plan of interest.
Actor:	Care Plan Service
Role:	The Care Plan Service responds to the Search for Care Plan according to the search parameters and values provided in the transaction.

3.41.3 Referenced Standards

HL7 FHIR standard release 3 (STU)

3.41.4 Interaction Diagram



780

3.41.4.1 Search for Care Plan

The Search for Care Plan is implemented through the FHIR search operation using the REST platform constrained to the HTTP or HTTPS GET.

3.41.4.1.1 Trigger Events

785 The Search for Care Plan may be initiated for a number of different reasons:

1. need to view a care plan;
2. need to update a portion of a care plan
3. need to subscribe to updates for a care plan

3.41.4.1.2 Message Semantics

790 This is a standard FHIR search operation on the CarePlan resource. It SHALL use the HTTP or HTTPS GET protocol

The URL for this operation is: [base]/CarePlan/_search

See the FHIR CarePlan resource Search Parameters at <http://hl7.org/fhir/careplan.html#search>

3.41.4.1.3 Expected Actions

795 The Care Plan Contributor initiates the search using HTTP or HTTPS GET, and the Care Plan Service responds according to the [FHIR Search specification](#) with zero or more care plans that match the search parameter values supplied with the search message. Specifically, the Care Plan Service returns a [bundle](#) as the HTTP Response, where the bundle includes the resources that are the results of the search.

800 **3.41.5 Security Considerations**

See X.5 DCP Security Considerations.

Appendices

None

805 **Volume 2 Namespace Additions**

Add the following terms to the IHE General Introduction Appendix G:

None

810

Volume 3 – Content Modules

5 Namespaces and Vocabularies

Add to Section 5 Namespaces and Vocabularies

NA

815 *Add to Section 5.1.1 IHE Format Codes*

NA

Add to Section 5.1.2 IHE ActCode Vocabulary

NA

Add to Section 5.1.3 IHE RoleCode Vocabulary

820 **6 Content Modules**

6.3.1 CDA^{®12} Content Modules

NA

6.6 HL7 FHIR Content Module

6.6.1 Care Plan

825 The following table shows the DynamicCarePlan StructureDefinition, which constrains the CarePlan resource. Constraints applied to the CarePlan base resource by this profile are shown in bold. The below table is a conceptual representation of the FHIR StructureDefinition.

Table 6.6.1-2: CarePlan resource

Name	Card.	Description & Constraints	(Profile) Comments
.. CarePlan		Healthcare plan for patient	
...identifier	1..*	External Ids for this plan	This version of the profile requires at least one identifier.
... identifier.value	1..1		This version of the profile requires an ID identifying this profile as an IHE PCC Dynamic Care Plan
... definition	0..*	Protocol or definition	
... basedOn	0..*	Fulfills care plan (reference carePlan)	This version of the profile requires that a related DynamicCarePlan be referenced when basedOn
... replaces	0..*	CarePlan replaced by this CarePlan (reference carePlan)	This version of the profile requires that a related DynamicCarePlan be referenced when replaced
... partOf	0..*	Part of referenced CarePlan (reference carePlan)	This version of the profile requires that a related DynamicCarePlan be referenced when partOf
... status	1..1	draft active suspended completed entered-in-error cancelled unknown	
... intent	1..1	proposal plan order option	
... category	1..*	Type of plan	This version of the profile fixes the code system to Snomed; http://snomed.info/sct

¹² CDA is the registered trademark of Health Level Seven International.

IHE Patient Care Coordination Technical Framework Supplement – Dynamic Care Planning (DCP)

Name	Card.	Description & Constraints	(Profile) Comments
... title	0..1	Human-friendly name for the CarePlan	
... description	1..1	Summary of nature of plan	This version of the profile requires a description
... subject	1..1	Identifies the patient.	For this version of the profile, the use of group is not supported.
... context	0..1	Created in context of	This profile allows for CarePlan creation outside of the context of an encounter or episode.
... period	1..1	Time period plan covers	This version of the profile requires at least a start time for the CarePlan.
... author	1..*	Who is responsible for contents of the plan	This version of the profile requires at least one author.
... careTeam	0..*	Who's involved in plan?	
... addresses	1..*	Health issues this plan addresses	This version of the profile requires one of more addressed conditions/problems/concerns/diagnoses
... supportingInfo	0..*	Information considered as part of plan (reference Any)	
... goal	1..*	Desired outcome of plan	This version of the profile requires at least one Goal.
... activity	0..*	Action to occur as part of plan Provide a reference or detail, not both	
.... outcomeCodeableConcept	0..*	Results of the activity	
.... outcomeReference	0..*	Appointment, Encounter, Procedure, etc. (reference Any)	
.... progress	0..*	Annotation Comments about the activity status/progress	
.... reference	0..1	Activity details defined in specific resource	
.... detail	0..1	In-line definition of activity	

IHE Patient Care Coordination Technical Framework Supplement – Dynamic Care Planning (DCP)

Name	Card.	Description & Constraints	(Profile) Comments
..... category	0..1	diet drug encounter observation procedure supply other CarePlanActivityCategory (Example)	
..... definition	0..1	Protocol or definition	
..... code	0..1	Detail type of activity Care Plan Activity (Example)	
..... reasonCode	0..*	Why activity should be done or why activity was prohibited Activity Reason (Example)	
..... reasonReference	0..*	Condition triggering need for activity	
..... goal	0..*	Goals this activity relates to	
..... status	1..1	not-started scheduled in-progress on-hold completed cancelled unknown CarePlanActivityStatus (Required)	
..... statusReason	0..1	Reason for current status GoalStatusReason (Example)	
..... prohibited	0..1	Do NOT do	
..... scheduled	0..1	When activity is to occur	
..... scheduledTiming			
..... scheduledPeriod			
..... scheduledString			

Name	Card.	Description & Constraints	(Profile) Comments
..... location	0..1	Where it should happen	
..... performer	0..*	Who will be responsible?	
..... product	0..1	What is to be administered/supplied SNOMED CT Medication Codes (Example)	
..... productCodeableConcept			
..... productReference			
..... dailyAmount	0..1	How to consume/day?	
..... quantity	0..1	How much to administer/supply/consume	
..... description	0..1	Extra info describing activity to perform	
... note	0..*	Annotation Comments about the plan	

830 A FHIR StructureDefinition can be found in implementation materials – see ITI TF-2x: Appendix W for instructions on how to get to the implementation materials.

6.6.2 Subscription

835 The following table documents the CarePlanSubscription, which constrains the Subscription resource. Changes to the base Subscription resource are shown in bold. The below table is a conceptual representation of the FHIR StructureDefinition.

Table 6.6.2-1: Subscription resource

Name	Card.	Description	Comments
.. Subscription		A server push subscription criteria	
...status	1..1	requested active off off	
...contact	0..*	Contact details for source (e.g., troubleshooting)	
...end	0..1	When to automatically delete the subscription	
...reason	1..1	Description of why this subscription was created	

IHE Patient Care Coordination Technical Framework Supplement – Dynamic Care Planning (DCP)

Name	Card.	Description	Comments
...criteria	1..1	Rule for server push criteria	
...error	0..1	Latest error note	
...channel	1..1	The channel on which to report matches to the criteria	
....type	1..1	rest-hook	This version of the profile constrains the channel type to rest-hook.
....endpoint	1..1	Where the channel points to	This version of the profile constrains the channel type to rest-hook, the endpoint must be a valid URL for the Provide Care Plan [PCC-40] transaction.
....payload	1..1	Mimetype to send	This version of the profile constrains the channel payload to a non-blank value - the CarePlan resource must be the payload.
....header	0..*	Usage depends on the channel type	
...tag	0..*	A tag to add to matching resources	

A FHIR StructureDefinition can be found in implementation materials – see ITI TF-2x: Appendix W for instructions on how to get to the implementation materials.

840

Appendices

None

Volume 3 Namespace Additions

Add the following terms to the IHE Namespace:

845 None

Volume 4 – National Extensions

Add appropriate Country section

None