

The IHE logo consists of the letters 'IHE' in a bold, dark blue, sans-serif font. A vertical line is positioned to the right of the letters, separating them from the tagline.

Integrating
the Healthcare
Enterprise

Patient Care Coordination Domain Update

Tone Southerland, Ready Computing
*Denise Downing, Association of periOperative
Registered Nurses*

Webinar Series 2014

<http://ihe.net/Webinars/>

Today's Presenters



Tone Southerland

*Planning Committee Chair, IHE PCC
Standards and Interoperability Architect, Ready
Computing*



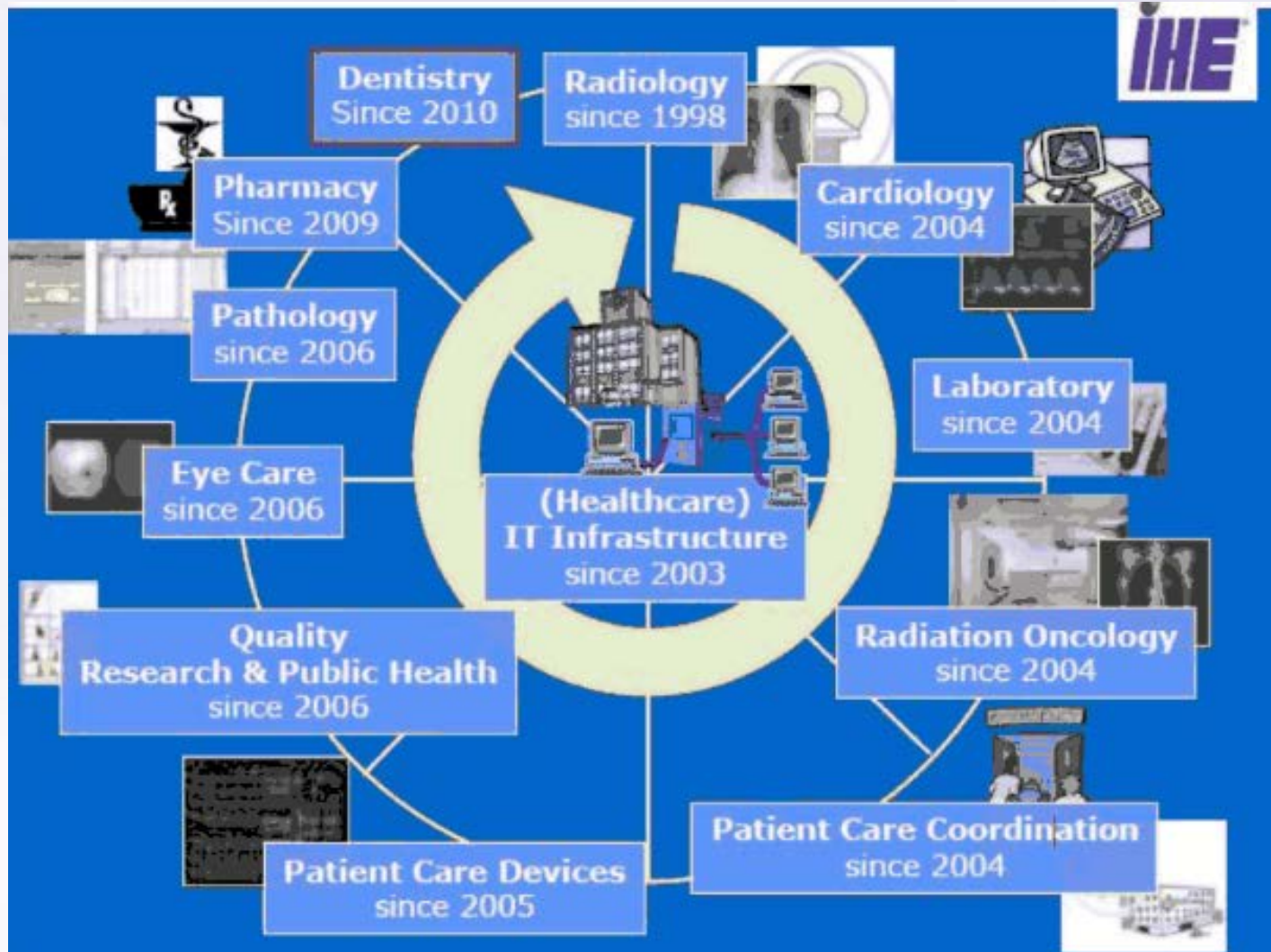
Denise Maxwell-Downing, MS, BSN, RN

*Planning Committee Nursing Chair, IHE PCC
Perioperative Informatics Nurse Specialist, AORN –
Assoc of periOperative Registered Nurses*

Agenda

- PCC Domain Vision and Mission
- PCC Roadmap
 - Content, Workflow, Nursing
- PCC Domain Profiles & Technical Frameworks
 - Existing Profiles
 - New Profiles
- How to Participate
 - IHE International Membership
 - Planning & Technical Committees
- Q&A Session

IHE Domains





PCC Vision and Mission

- **Vision:** The vision of Patient Care Coordination is to continually improve patient outcomes through the use of technology connecting across healthcare disciplines and care paths.
- **Mission:** The mission of Patient Care Coordination is to develop and maintain interoperability profiles to support coordination of care for patients where that care crosses providers, patient conditions and health concerns, or time.



PCC Roadmap

Strategic Goals

– **Content**

- Coordinate with external standards development organizations (SDOs) to develop and promote the use of content templates
- Develop strategies to support multi-level content template guidance to benefit the global community

– **Workflow**

- Develop new profiles by reaching outward to other IHE domains to coordinate workflows across care paths
- Develop white papers by researching new areas that could benefit from standards based interoperability guidance

– **Nursing**

- Explore and understand the benefit of IHE profile work in the nursing space by partnering with nursing organizations and initiatives
- Develop profiles and white papers to support and explore various nursing specific workflows

PCC Scope

- Scope
 - General clinical care aspects such as document exchange, order processing and coordination with other specialty domains.
 - Workflows and integration needs that are common to multiple specialty areas.
- Sponsors
 - Health Information and Management Systems Society ([HIMSS](#))
 - American College of Physicians ([ACP](#))
- Countries actively involved in committees
 - United States
 - Canada
 - Italy
 - France
 - Netherlands

PCC History

- History
 - IHE PCC was formed in 2004
 - The committee's first profile was also IHE's first content profile: XDS-MS. The profile was delivered in September of 2005 for Trial Implementation.
 - Since then, PCC has created 23 content profiles, 5 workflow profiles, and 7 integration profiles.
 - The IHE PCC Technical Framework is used in national programs in the US, France, Italy, the EU and Asia (China, Saudi Arabia, others).



Profiles & Technical Frameworks

Overview

- IHE Technical Frameworks
 - http://ihe.net/Technical_Frameworks/#pcc
- IHE Profiles developed by PCC
 - [http://wiki.ihe.net/index.php?title=Profiles#IHE Patient Care Coordination Profiles](http://wiki.ihe.net/index.php?title=Profiles#IHE_Patient_Care_Coordination_Profiles)
- Learn More
 - Webinar Series <http://ihe.net/Webinars/>



Profiles & Technical Frameworks

Existing High Uptake Profiles

- Medical Summaries (XDS-MS)
 - Discharge and Referral Summaries exchanged between providers
 - EHR and HIS solutions
 - Ensures adequate exchange of data for referrals and transitions of care between inpatient and ambulatory settings.
- Emergency Department Referral (EDR)
 - Enhances XDS-MS to support “Heads-up” call to ED
 - EHR, EDIS, HIS, HIE
 - Provides critical data needed in ED visits
- Exchange of Personal Health Records (XPHR)
 - Exchange Clinical Summary data with patients
 - EHRs, PHRs, Patient Portals
 - Ensures that patients have updated lists of healthcare providers, problems, medications, allergies, immunizations, lab results, procedures and encounters

Profiles & Technical Frameworks

Existing Profiles for Clinical Decision Support

- Query for Existing Data (QED)
 - Access to clinical data (problems, medications, allergies, results, procedures, encounters)
 - EHR, CDR, HIS, Registries
 - Provides access to clinical data for use in quality measurement, reporting, clinical decision support, and research
- Care Management (CM)
 - Supports communication to specialized care delivery systems for disease management
- Request for Clinical Guidance (RCG)
 - Access to Clinical Decision Support
 - EHR, other HIT Systems
 - Provides standardized interface to access clinical decision support as a service
- Retrieve Clinical Knowledge (RCK)
 - How Health IT systems, Personal Health Records, and HIEs can retrieve clinical knowledge on a topic suitable for presentation to a clinician or patient



Profiles & Technical Frameworks

Existing Profiles for Emergency Care

- Transport Record Summary Profiles
 - Documents care that occurs during patient transport
 - Fixed wing, helicopter, ambulance
 - EHR, EDIS, Transport Team
- Emergency Department Encounter Summary (EDES)
 - Documents care in an ED encounter
 - EHR, EDIS, other HIT Systems
 - Provides critical information for patients and providers after an ED visit.

Profiles & Technical Frameworks

Existing Profiles for Obstetric, Pediatric

- Antepartum Profiles:
 - Antepartum H&P (APHP)
 - Antepartum Summary (APS)
 - Antepartum Laboratory (APL)
 - Antepartum Education (APE)
- Labor and Delivery Profiles:
 - Labor and Delivery H&P (LDHP)
 - Labor and Delivery Summary (LDS)
 - Maternal Discharge Summary (MDS)
- Postpartum Visit Summary (PPVS)
- Pediatric
 - Newborn Discharge Summary (NDS)
- Immunizations
 - Immunization Content (IC)



Profiles & Technical Frameworks

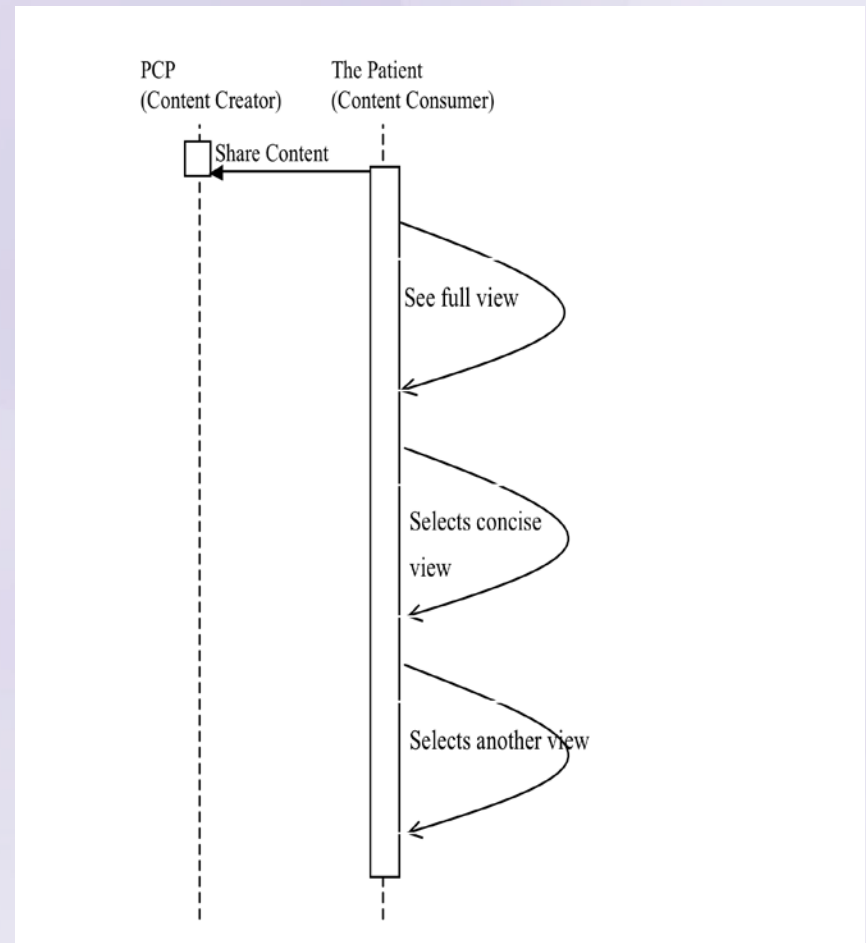
Existing Profiles for Workflow

- Cross Enterprise Basic eReferral Workflow Definition (XBeR-WD)
 - Builds on ITI XDW to manage the workflow related to an eReferral
- Cross Enterprise Tumor Board Workflow Definition (XTB-WD)
 - Builds on ITI XDW to manage the workflow related to managing the multidisciplinary tumor board review
- Early Hearing Detection and Intervention-Workflow Definition (EHDI-WD)
 - Builds on ITI XDW to manage collection and exchange of newborn hearing screening information
- Cross Enterprise TeleHome Monitoring (XTHM)
 - Builds on ITI XDW to manage the clinical process involving chronic patients followed by telemonitoring services
- Referral and Order Linking (ROL)
 - Makes use of new actors (order placer, order filler) to link referrals created in disparate systems
 - Includes use cases across a variety of health care settings
- Perinatal Workflow (PW)

Profiles & Technical Frameworks

New Profiles in Development – Multiple Content Views (MCV)

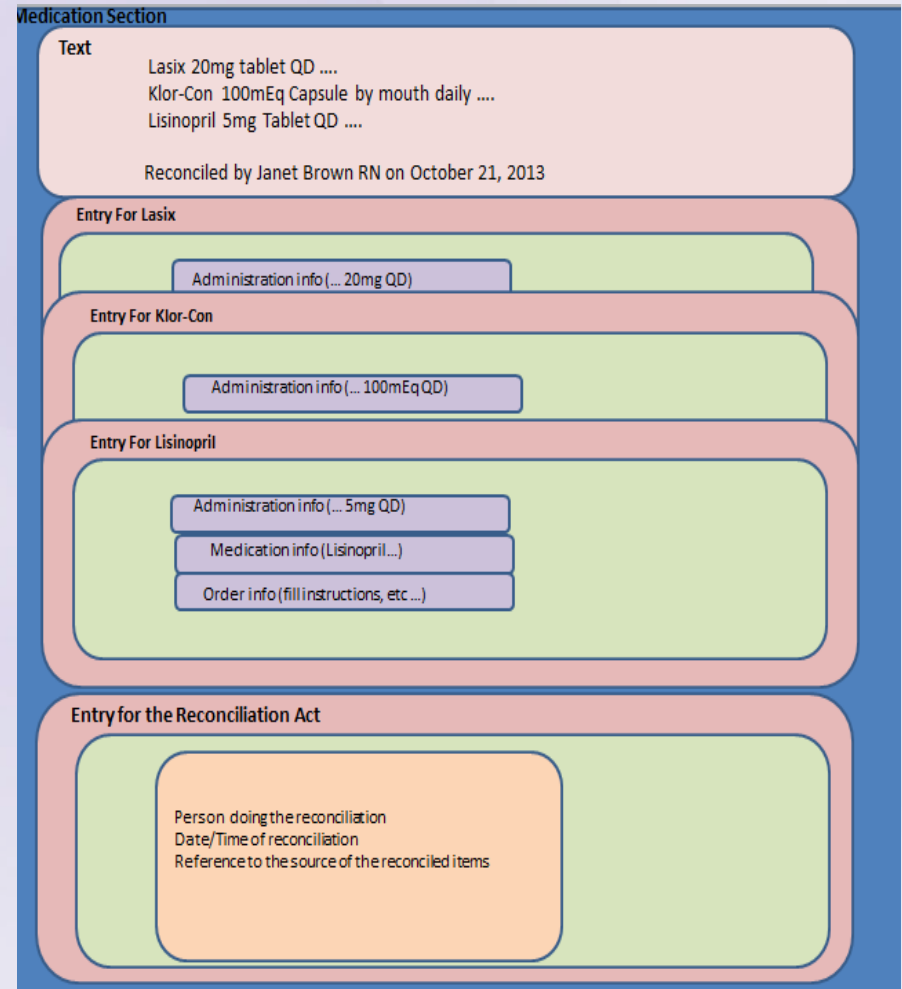
- Provides guidance on how text in CDA documents may be tagged to achieve different rendering behaviors
- Focus is on the narrative text, not the entries
- Can be applied to many PCC content profiles, across several use cases



Profiles & Technical Frameworks

New Profiles in Development – Reconciliation (RECON)

- Clinical Content and Care Providers - updated version now includes:
 - medications, problems, allergies, **immunizations, results, observations, goals, care providers**
- From multiple facilities, over multiple periods of time and different clinical events
- Increases patient safety by providing mechanism to reconcile information





Profiles & Technical Frameworks

White Paper – A Data Access Framework using IHE Profiles

- Describes a framework by which IHE profiles can support multiple means of access through a modular framework with substitutable components (profiles)
- Supports use cases around individual and population health
- Identifies gaps in existing profiles to meet use cases and requirements
- Enterprise Architecture Frameworks
 - [RM-ODP](#)
 - [Zachman Framework](#)
 - [HL7 SAIF](#)
- Approach
 - Why: Business dimension
 - What: Information dimension
 - How: Behavioral dimension
 - Where: Technology dimension

PCC Roadmap – Nursing

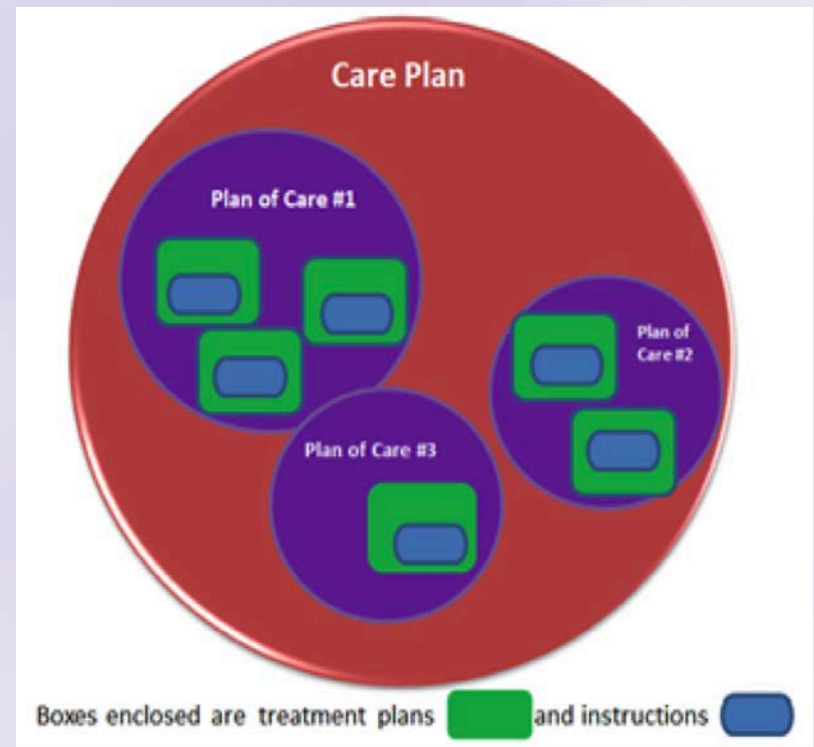
Existing Profiles for Nursing

- Patient Plan of Care (PPOC)
 - A framework for RNs contribution to the patients plan of care
 - Exchange of information for assessments, diagnosis, interventions, and outcomes
 - Defines implementation of an HL7 CDA document to represent coded nursing data elements for care planning
 - Sits within a larger folder
- eNursing Summary (ENS)
 - Interoperable summary of nursing data for care transitions
 - Data elements by-product of an international survey
- Implementation Priorities for IHE Nursing Subcommittee White Paper
 - Support the uptake of PPOC and eNS profiles

PCC Roadmap – Nursing

Existing Profiles for Nursing

- Patient Care Plan (PtCP)
 - Content profile defining a centralized care plan to meet the needs of many stakeholders
 - Creates opportunity for reconciliation/consolidation of disparate care plans
 - Addresses Treatment Plans, Plans of Care and Care Plans

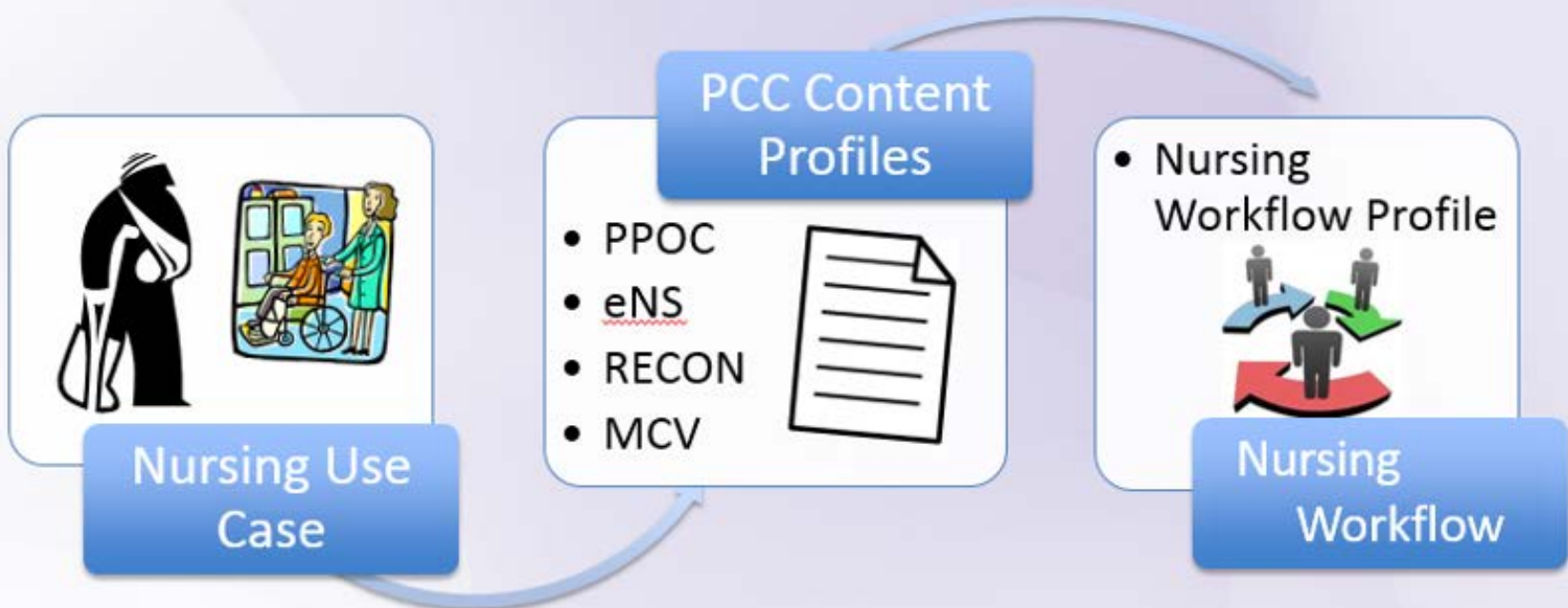


PCC Roadmap – Nursing

New Directions

We have content today, need workflow tomorrow to provide further guidance on how to use that content in a meaningful way

- Communication Workflows
- Care Coordination Workflows



How to Participate in PCC

IHE International Membership is Free

- Apply for IHE International Organizational Membership
 - Visit: www.ihe.net/join
 - [Review IHE's 400+ Organizational Members](#)
- Participate in IHE Domains & Committees
 - IHE Organizational Members only
 - 13 Clinical and Operational Domains
 - Each Domain has one planning and one technical committee
- Non-members participate in comment periods and implement IHE Technical Frameworks

PCC Planning Responsibilities

Planning Committee

- Recruitment
- Education
- Review IHE Profiles Proposals
- Identifies committee priorities and problems
- Planning for 2014-2015
- Committee Roadmap

Contact Information

- ihe@himss.org
- Co-chair: [Laura Heermann Langford](#)
- Co-chair: [Tone Southerland](#)
- pccplan@googlegroups.com
- IHE.net page:
 - http://www.ihe.net/Patient_Care_Coordination/
- Wiki page:
 - <http://bit.ly/IHEPCCPlan>



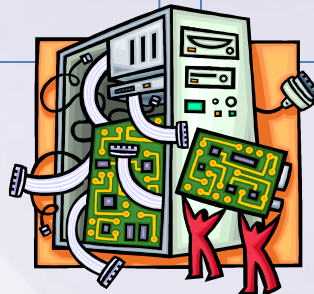
PCC Technical Responsibilities

Technical Committee

- Recruitment
- Development of IHE Profiles
- Maintenance of IHE Technical Frameworks
- Projects:
 - Multiple Content Views (MCV)
 - Reconciliation (RECON)
 - Incoming profile development

Contact Information

- ihe@himss.org
- Co-chair: [Emma Jones](#)
- Co-chair: [Laura Bright](#)
- pcctech@googlegroups.com
- IHE.net page:
 - http://ihe.net/Patient_Care_Coordination/
- Wiki page:
 - <http://bit.ly/IHEPCCTech>



How to Participate in PCC?

Participate IHE's Profile Cycle

- Committee work follows the IHE Profile Cycle
 - Annual eighteen (18) month cycle
 - Each IHE domain has independent schedule
 - Opportunities for IHE members and non-members to participate in cycle
- Detailed overview of IHE Cycle next

IHE Profiles Drafted & Revised



Published For Public Comment

Trial Implementation Posted



Test at IHE Connectathons



Publish in IHE's Product Registry

months 14-18

IHE Technical Framework Developed

months 6-13

Demonstrate at a



Profile Selection by Committees

IHE Call for Proposals Opens

months 1-5

IHE Improves, Safety, Quality and Efficiency in Clinical Settings

Install Interoperable products in Clinical Settings worldwide



IHE Profile Cycle Stages	Participation Status	Open Date	Close Date	Learn More
<i>Call for Proposals</i>	Open	Jul 9, 2014	Sep 26, 2014	ftp://ftp.ihe.net/Patient_Care_Coordination/Templates/IHE_Profile_Proposal_Template-Brief.docx
<i>Profile Selection</i>	Closed	Oct 22-23, 2014	Nov 12-13, 2014	http://bit.ly/IHEPCCPlan
<i>IHE Profiles drafted in IHE Committees</i>	Closed	Jan 2015	May 2015	http://bit.ly/IHEPCCTech
<i>Public Comment</i>	Open	Apr 2015	Jul 2014	IHE.net- Documents now in PC IHE's Wiki- PC Process explained
<i>Trial Implementation Published</i>	Open	N/A	Aug 2015	http://bit.ly/IHEPCCTF
<i>IHE Connectathon Registration</i>	Open	Aug 25, 2014	Oct 3, 2014	IHE N.A. Connectathon Registration
<i>IHE Connectathon Dates</i>	Open	Jan 26-30, 2015		IHE N.A. Connectathon Resources

http://wiki.ihe.net/index.php?title=Patient_Care_Coordination

Learn More about IHE International

Important Links and Information

- All webinar recordings and slide decks will be posted online
 - <http://ihe.net/Webinars/>
- Sign up for the IHE International News
 - Email secretary@ihe.net
- Apply for IHE International Membership
 - <http://ihe.net/Join/>



Learn More about IHE Connectathons

- IHE International Connectathons
 - <http://ihe.net/Connectathon/>
- IHE N.A. Connectathon is Jan 26-30, 2015
 - <http://www.iheusa.org/connectathon.aspx>
- IHE N.A. Connectathon Registration Open: Aug 25 – Oct 3, 2014
 - Registration:
 - Participant Guidelines online:
 - <http://www.iheusa.org/connectathon-participantresources-guidelines.aspx>

Thank you for your attention
Questions?