

The IHE logo consists of the letters 'IHE' in a bold, dark blue, sans-serif font. A vertical line is positioned to the right of the letters, separating them from the tagline.

IHE

Integrating
the Healthcare
Enterprise

A stylized globe showing the Americas, rendered in a light purple color, is positioned in the lower-left quadrant of the slide. It is partially overlaid by abstract, flowing lines that sweep across the background.

***Integrating the Healthcare Enterprise
International***

Webinar Series 2015

6/24/2015

The IHE logo consists of the letters 'IHE' in a bold, dark blue, sans-serif font. A vertical line is positioned to the right of the letters, separating them from the tagline.

IHE

Integrating
the Healthcare
Enterprise

IHE Eye Care

- Donald Van Syckle, DVS Consulting
- IHE Eye Care Planning Committee and Technical Committee Consultant

6/24/2015

IHE Eye Care Agenda

- Domain & Committee Overview
- Domain Profiles & Technical Frameworks
- List and Road Map of Profiles developed
- New Profiles developed in 2014-2015
- How to Participate?
- IHE International Membership
- Planning & Technical Committees
- Q&A Session

IHE Eye Care Overview

Overview

Scope:

- Workflow
- Information sharing
- Patient care

Sponsor:

- American Academy of Ophthalmology

Countries involved in committees

- US, Germany, Japan, New Zealand, India

IHE Eye Care Overview

History

- Initiated in 2005, Started with Advanced Eye Care Workflow
- Currently 7 integration profiles and 3 CDA content Profiles in FT or TI

Road Map

- 2009-2010
 - Expand vendor participation, Added Acquisition Modality Importer
 - Created Evidence Documents
- 2010-2012
 - Added Basic Eye Care Workflow
 - Created Displayable Reports and General Eye Evaluation CDA
- 2012-2013
 - Cataract Surgery CDA, General Operative Note (public comment only)
 - Created Appointment Scheduling
- 2013-2014
 - Revised General Eye Evaluation – based on C-CDA Progress and Consult Notes (MU2)
 - Created Core Eye Care Workflow – (EHR stores/displays, no PACS)
- 2014-2015
 - Created Eye Care Summary Record– based on C-CDA CCD (MU2)
 - Created Unified Eye Care Workflow – select best workflow features from earlier profiles

Profiles & Technical Frameworks

Overview

- IHE Technical Frameworks
http://www.ihe.net/Technical_Frameworks/
- IHE Profiles developed by Eye Care
 - http://www.ihe.net/Technical_Frameworks/#eyecare

Profiles & Technical Frameworks

Workflow Based Profiles

- Advanced Eye Care Workflow – 2006
- Basic Eye Care Workflow - 2011
- Core Eye Care Workflow – 2014
- ***Unified Eye Care Workflow – 2015***
 - Takes the best features of the previous workflows
 - Combines them into one profile
 - Provides more flexibility for real world implementation models for systems such as EHRs and PACS

Profiles & Technical Frameworks

Unified Eye Care Workflow Overview

- Patient Registration and Appointment Scheduling
 - Sent between Practice Management Systems (PMS) and EHRs
 - ADT/Patient registration uses A04 and A08
 - Manage patient appointments using HL7 SIU messages
 - New, confirmed, patient checked in, cancelled, deleted, etc.
 - Used in all Real World Models
 - ***All HL7 messages in profile based upon HL7 v2.5.1***
- Real World Model I – EHR Implements DICOM Worklist and Integrates with a PACS
 - Organizations have a PMS, EHR, centralized Image Archive/Display (PACS) and eye care diagnostic imaging and testing equipment (fundus cameras, slit lamps, refractive measurement devices, visual fields etc.)
 - DICOM Model similar to Basic Eye Care Workflow

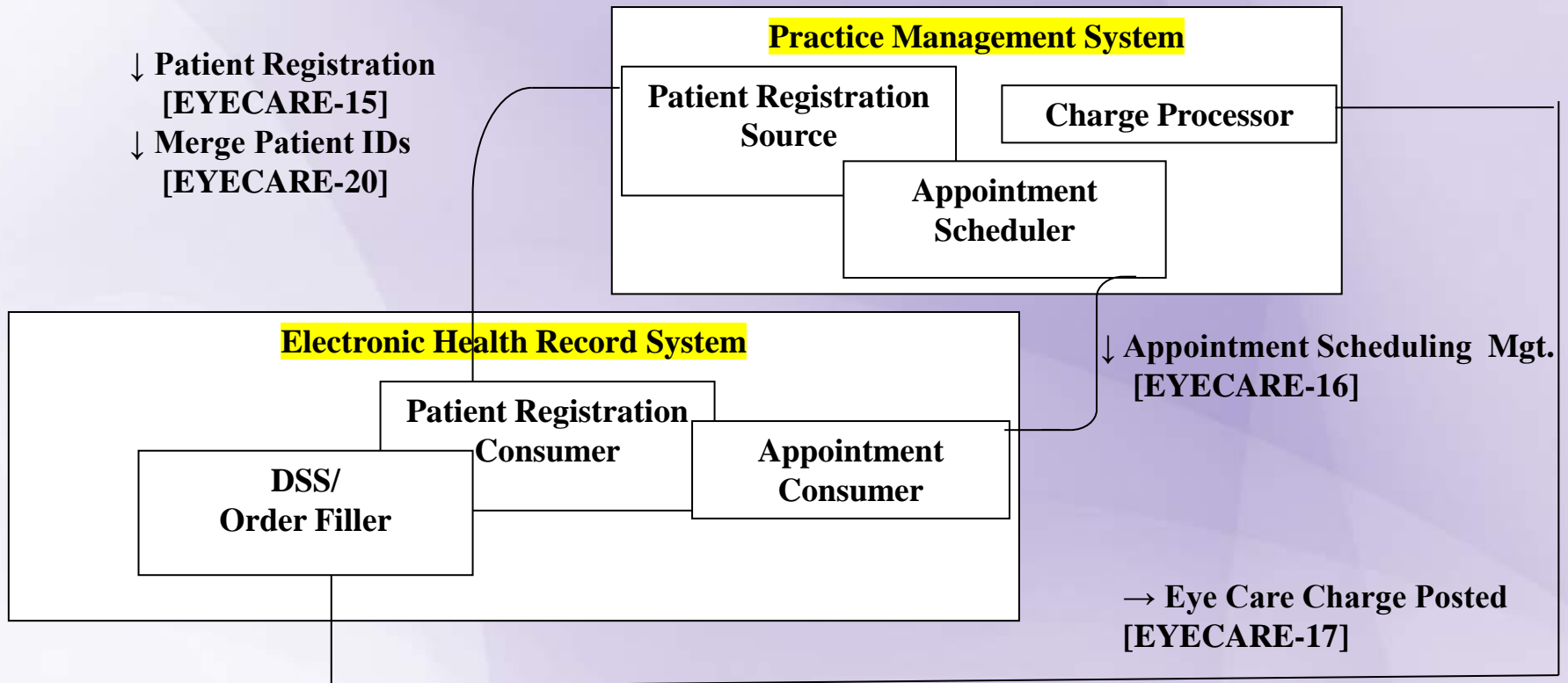
Profiles & Technical Frameworks

Unified Eye Care Workflow Overview

- Real World Model II – EHR Implements DICOM Worklist, Image Storage and Display (No PACS)
 - Organizations have a PMS, EHR and eye care diagnostic imaging and testing equipment
 - EHR performs the storage (not archive) and display of images/measurements
 - Acquisition devices and users are responsible for the safe keeping of the images and/or measurements created upon their system
 - Acquisition devices **shall** be able to send “selected” images only
- Real World Model III – EHR Implements HL7 Only (no DICOM Support) and Integrates with PACS
 - Organizations have a PMS, EHR, centralized Image Archive/Display (PACS) and eye care diagnostic imaging and testing equipment
 - EHR does not support DICOM so PACS implements DICOM Modality Worklist

Profiles & Technical Frameworks

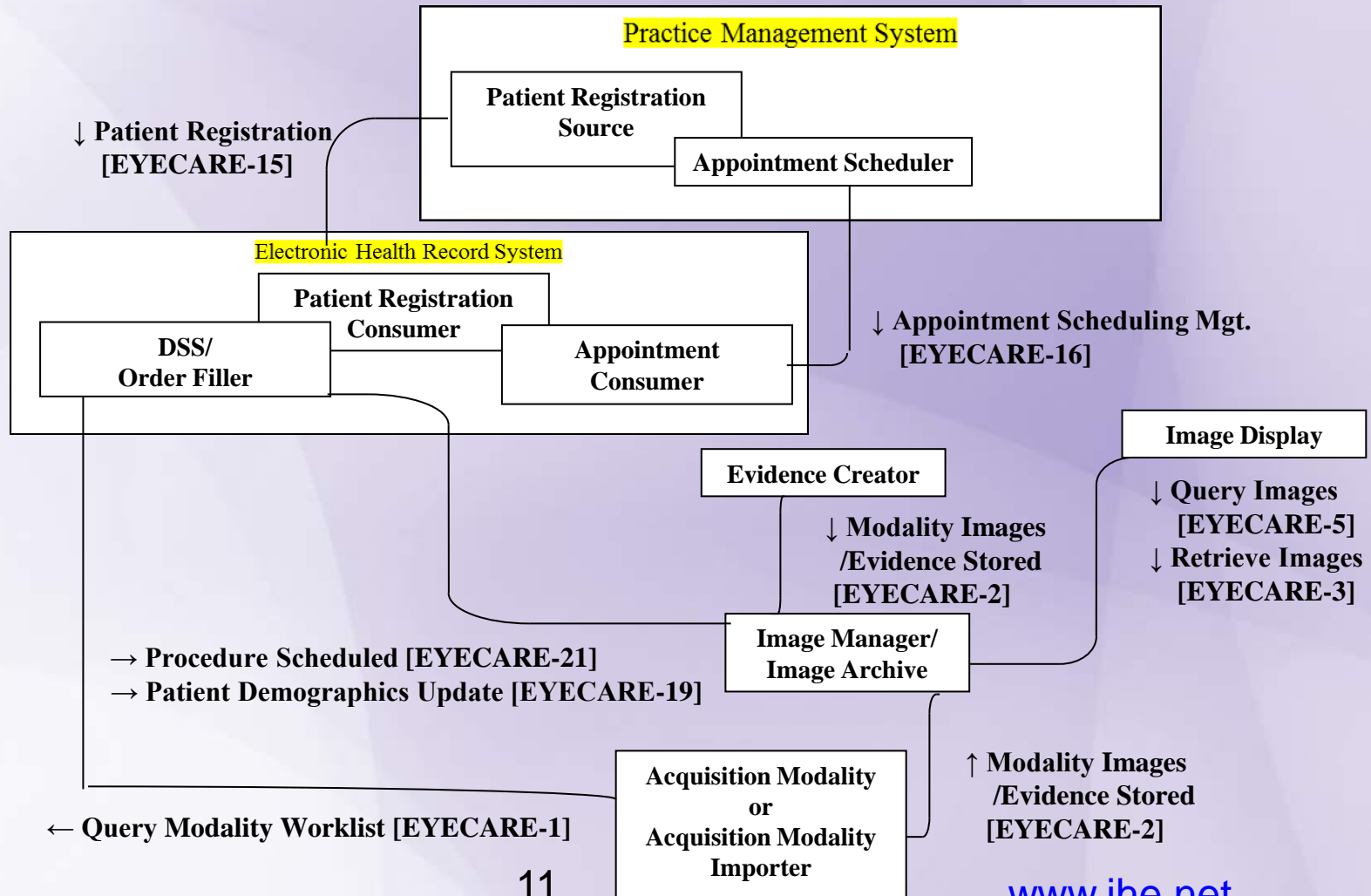
U Eye Care – Pat Registration and Appointments



Merge Patient IDs and Eye Care Charge Posted is optional

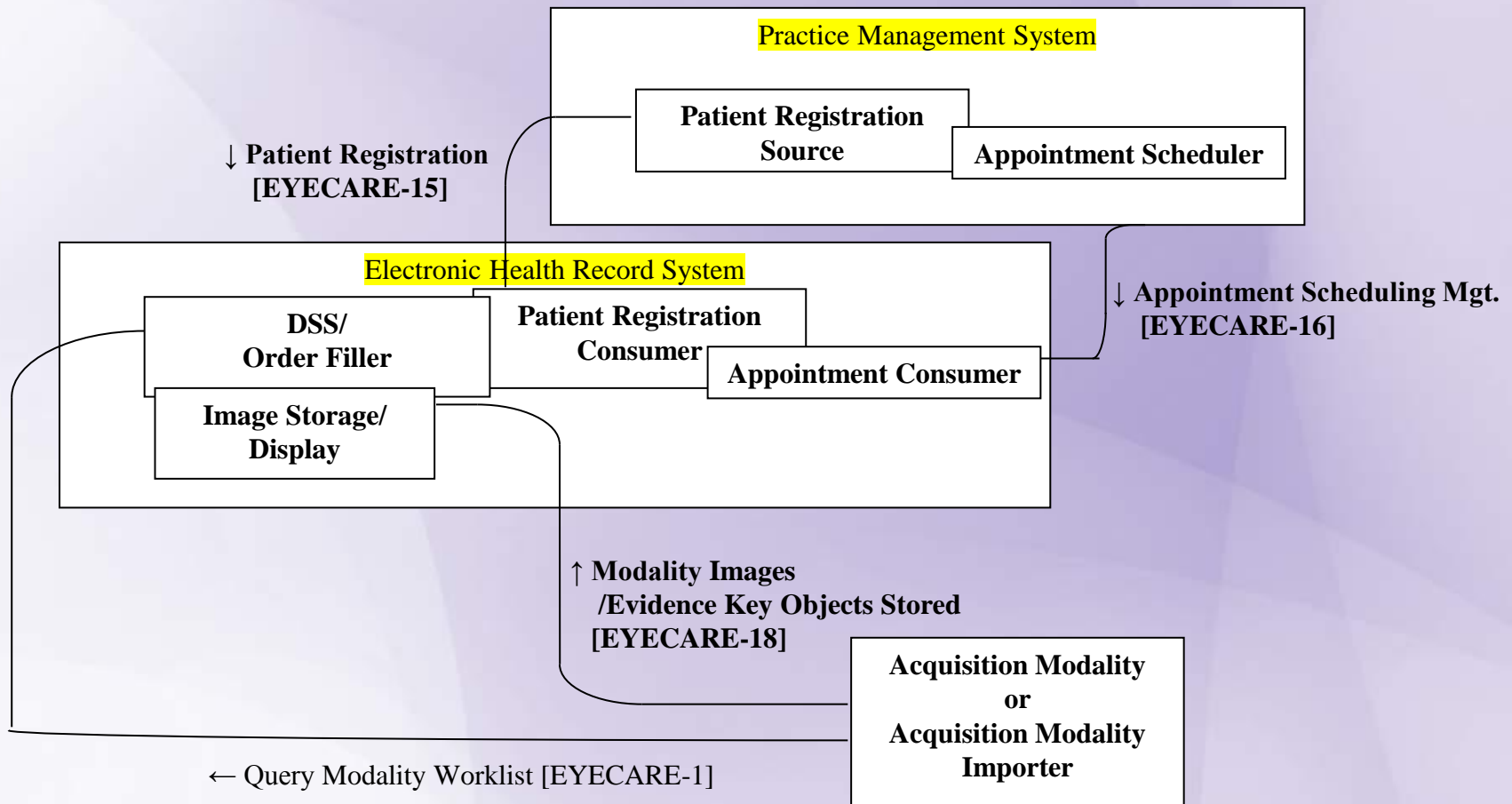
Profiles & Technical Frameworks

U Eye Care – Real World Model I



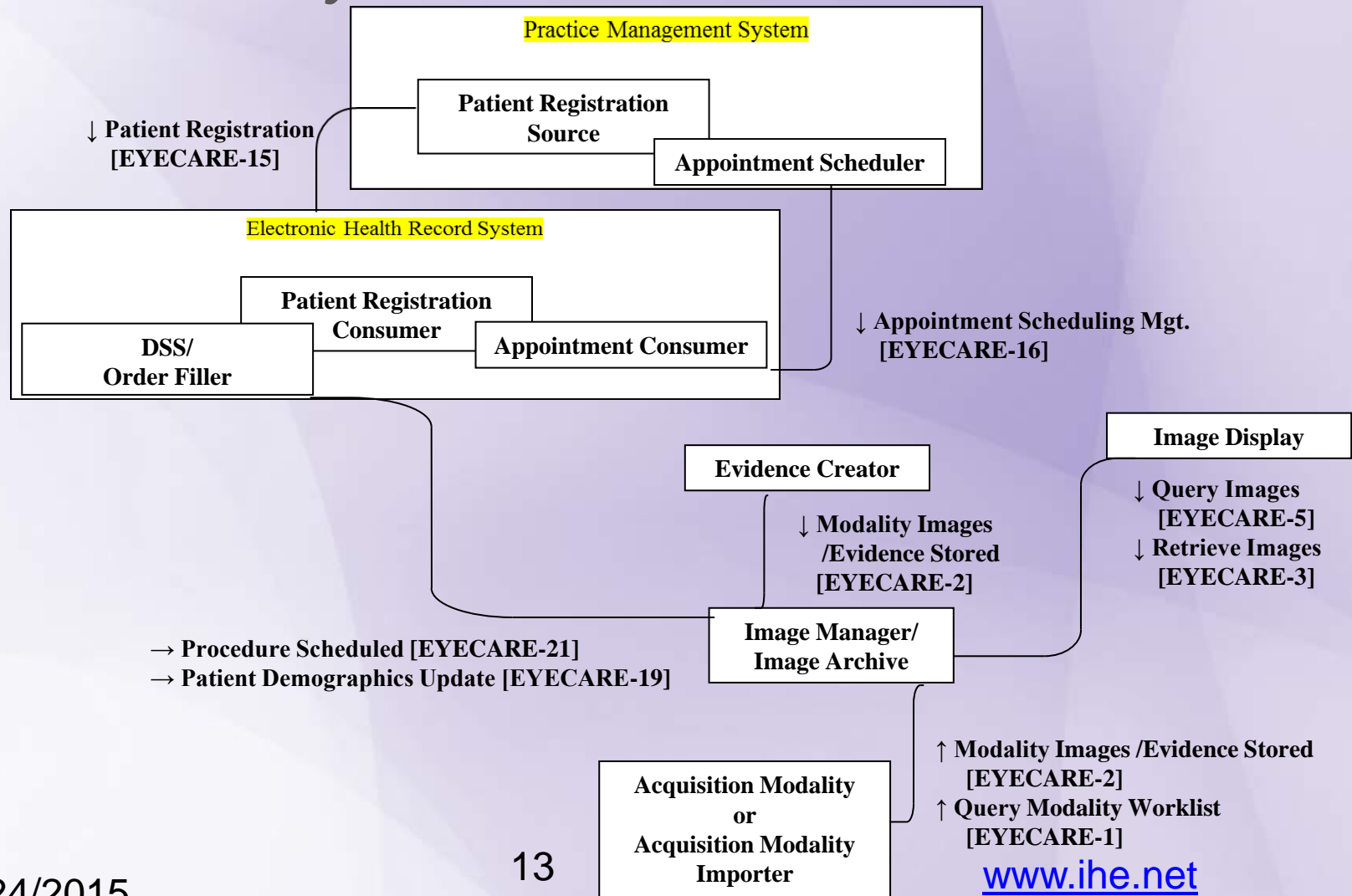
Profiles & Technical Frameworks

U Eye Care – Real World Model II



Profiles & Technical Frameworks

U Eye Care – Real World Model III



Conform to Actors/Transactions AND a Real World Model

Actors	Transactions	Model I	Model II	Model III	Section
		Transaction Optionality			
Patient Registration Source	Patient Registration [EYECARE-15]	R	R	R	EYECARE TF-2: 4.15
Appointment Scheduler	Appointment Scheduling Management [EYECARE-16]	R	R	R	EYECARE TF-2: 4.16
Patient Registration Consumer	Patient Registration [EYECARE-15]	R	R	R	EYECARE TF-2: 4.15
Appointment Consumer	Appointment Scheduling Management [EYECARE-16]	R	R	R	EYECARE TF-2: 4.16
Department System Scheduler/ Order Filler	Patient Demographics Update [EYECARE-19]	R		R	EYECARE TF-2: 4.19
	Query Modality Worklist [EYECARE-1]	R	R		EYECARE TF-2: 4.1
	Procedure Scheduled [EYECARE-21]	R		R	EYECARE TF-2: 4.21
	Modality Images/Evidence Key Objects Stored [EYECARE-18]		R		EYECARE TF-2: 4.18
Image Manager/ Image Archive (Not an Actor for Model II)	Procedure Scheduled [EYECARE-21]	R		R	EYECARE TF-2: 4.21
	Patient Demographics Update [EYECARE-19]	R		R	EYECARE TF-2: 4.19
	Query Modality Worklist [EYECARE-1]			R	EYECARE TF-2: 4.1
	Modality Images/Evidence Stored [EYECARE-2]	R		R	EYECARE TF-2: 4.2
	Modality Images/Evidence Key Objects Stored [EYECARE-18]	R		R	EYECARE TF-2: 4.18
	Query Images [EYECARE-5]	R		R	EYECARE TF-2: 4.5
	Retrieve Images [EYECARE-3]	R		R	EYECARE TF-2: 4.3
Image Storage/Display (Only required in Model II)	Modality Images/Evidence Key Objects Stored [EYECARE-18]		R		EYECARE TF-2: 4.18

Conform to Actors/Transactions AND a Real World Model

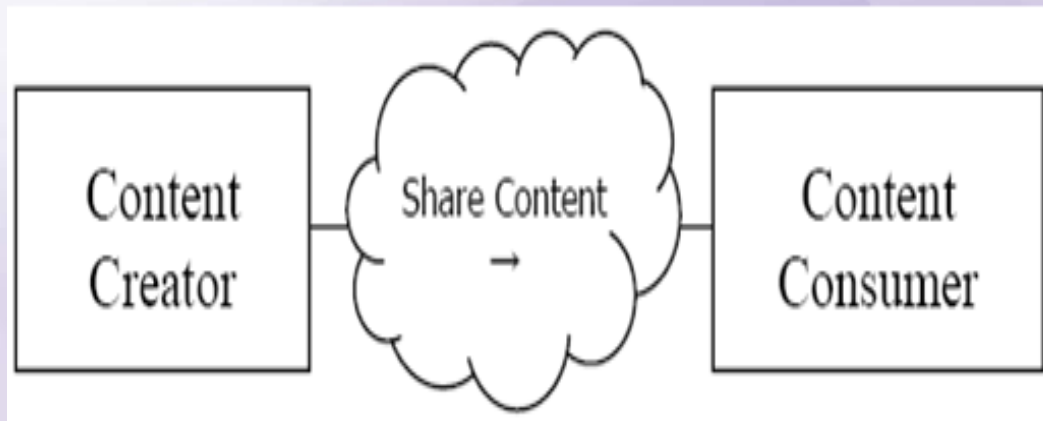
Actors	Transactions	Model I	Model II	Model III	Section
		Transaction Optionality			
Image Display (Not an Actor for Model III)	Query Images [EYECARE-5]	R		R	EYECARE TF-2: 4.5
	Retrieve Images [EYECARE-3]	R		R	EYECARE TF-2: 4.3
Acquisition Modality	Query Modality Worklist [EYECARE-1]	R	R	R	EYECARE TF-2: 4.1
	Modality Images/Evidence Stored [EYECARE-2]	R		R	EYECARE TF-2: 4.2
	Modality Images/Evidence Key Objects Stored [EYECARE-18]		R		EYECARE TF-2: 4.18
Acquisition Modality Importer	Query Modality Worklist [EYECARE-1]	R	R	R	EYECARE TF-2: 4.1
	Modality Images/Evidence Stored [EYECARE-2]	R		R	EYECARE TF-2: 4.2
	Modality Images/Evidence Key Objects Stored [EYECARE-18]		R		EYECARE TF-2: 4.18
Charge Processor	Eye Care Charge Posted [EYECARE-17]	R	R	R	EYECARE TF-2: 4.17
Evidence Creator	Modality Images/Evidence Stored [EYECARE-2]	R		R	EYECARE TF-2: 4.2
Performed Procedure Step Manager	Modality Procedure Step In Progress [RAD-6]	R			RAD TF-2: 4.6
	Modality Procedure Step Completed [EYECARE-6]	R			RAD TF-2: 4.7

Profiles & Technical Frameworks

CDA Based Content Profiles

- ***General Eye Evaluation (GEE)*** based upon C-CDA Progress and Consult Note (driven by MU2)
- ***Eye Care Summary Record*** based upon C-CDA CCD (driven by MU2)
 - Use Cases
 - Capture routine adult eye exam for encounters and summary of care
 - General sections, such as medications, allergies, histories, chief complaint, etc. based upon Consolidated C-CDA Release 2 (which is used by MU2)
 - GEE enables data to be captured for the AAO IRIS Registry™
 - Benefits:
 - Standardizing the general eye evaluation
 - Transfer patient examination data between diverse information platforms (i.e. EHR to EHR, etc.)
 - Increasing interoperability with EHR systems that chose to support MU2
 - Reduce burden on EHR systems that simultaneously support GEE and MU2
 - IHE ***does not*** define MU2 or IRIS requirements so read those specs

Enables vendors to create documents supporting both MU2 and IHE Eye Care



Actors	Optionality	Section
Content Consumer (the Actor must support at least one of the options)	View Option	PCC TF-2: 3.1.1
	Document Import Option	PCC TF-2: 3.1.2
	Section Import Option	PCC TF-2: 3.1.3
	Discrete Data Import Option	PCC TF-2: 3.1.4
Consumer Creator	No options defined	

GEE based upon C-CDA Progress Note (Encounter based)

Template Name	OPT	Template Id	Informative
CDA Header Modules	M [1..1]	See Section 6.3.1.1.4	GEE, C-CDA, IRIS REGISTRY™
Allergies (entries optional)	R[0..1]	2.16.840.1.113883.10.20.22.2.6	GEE, C-CDA, IRIS REGISTRY
Assessment and Plan	C[1..1]*	2.16.840.1.113883.10.20.22.2.9	GEE, C-CDA, IRIS REGISTRY
Assessment	C[1..1]*	2.16.840.1.113883.10.20.22.2.8	GEE, C-CDA, IRIS REGISTRY
Chief Complaint	R[0..1]	1.3.6.1.4.1.19376.1.5.3.1.1.13.2.1	GEE, C-CDA
Instructions	O[0..1]	2.16.840.1.113883.10.20.22.2.45	C-CDA, IRIS REGISTRY
Interventions	O[0..1]	2.16.840.1.113883.10.20.21.2.3	C-CDA, IRIS REGISTRY
Medications (entries optional)	O[0..1]	2.16.840.1.113883.10.20.22.2.1	GEE, C-CDA, IRIS REGISTRY
Objective	O[0..1]	2.16.840.1.113883.10.20.21.2.1	C-CDA
Physical Exam	O[0..1]	2.16.840.1.113883.10.20.2.10	C-CDA
Plan of Care	C[1..1]*	2.16.840.1.113883.10.20.22.2.10	GEE, C-CDA, IRIS REGISTRY
Problem (entries optional)	O[0..1]	2.16.840.1.113883.10.20.22.2.5	GEE, C-CDA, IRIS REGISTRY
Results (entries optional)	O[0..1]	2.16.840.1.113883.10.20.22.2.3	C-CDA
Review of Systems	R[0..1]	1.3.6.1.4.1.19376.1.5.3.1.3.18	GEE, C-CDA
Subjective	O[0..1]	2.16.840.1.113883.10.20.21.2.2	C-CDA
Vital Signs (entries optional)	O[0..1]	2.16.840.1.113883.10.20.22.2.4	C-CDA, IRIS REGISTRY
Encounters (entries optional)	O[0..1]	2.16.840.1.113883.10.20.22.2.22	IRIS REGISTRY
Family History	R[0..1]	2.16.840.1.113883.10.20.22.2.15	GEE
Functional Status	R[0..1]	2.16.840.1.113883.10.20.22.2.14	GEE
Healthcare Providers and Pharmacies	R[0..1]	1.3.6.1.4.1.19376.1.5.3.1.2.3	GEE, IRIS REGISTRY
History of Past Illness	R[0..1]	2.16.840.1.113883.10.20.22.2.20	GEE
History of Present Illness	R[0..1]	1.3.6.1.4.1.19376.1.5.3.1.3.4	GEE
List of Surgeries	R[0..1]	2.16.840.1.113883.10.20.22.2.26	GEE
Coded List of Surgeries	O[0..1]	1.3.6.1.4.1.19376.1.5.3.1.3.12	GEE
Medications (entries required)	R[0..1]	2.16.840.1.113883.10.20.22.2.1.1	GEE, IRIS REGISTRY
Ocular History	R[0..1]	1.3.6.1.4.1.19376.1.12.1.2.3	GEE, IRIS REGISTRY
Ocular Physical Exam	M[1..1]	1.3.6.1.4.1.19376.1.12.1.2.5	GEE, IRIS REGISTRY
Ophthalmic Medications	R[0..1]	1.3.6.1.4.1.19376.1.12.1.2.4	GEE, IRIS REGISTRY
Problem (entries required)	R[0..1]	2.16.840.1.113883.10.20.22.2.5.1	GEE, IRIS REGISTRY
Procedure (entries optional)	O[0..1]	2.16.840.1.113883.10.20.22.2.7	IRIS REGISTRY
Social History	R[0..1]	2.16.840.1.113883.10.20.22.2.17	GEE, IRIS REGISTRY

GEE based upon C-CDA Consultation Note (Encounter based)

Template Name	OPT	Template Id	Informative
CDA Header Modules	M [1..1]	See Section 6.3.1.2.3	GEE, C-CDA, IRIS REGISTRY
Allergies (entries optional)	R[0..1]	2.16.840.1.113883.10.20.22.2.6	GEE, C-CDA, IRIS REGISTRY
Assessment and Plan	C[1..1]*	2.16.840.1.113883.10.20.22.2.9	GEE, C-CDA, IRIS REGISTRY
Assessment	C[1..1]*	2.16.840.1.113883.10.20.22.2.8	GEE, C-CDA, IRIS REGISTRY
Chief Complaint	C[1..1]**	1.3.6.1.4.1.19376.1.5.3.1.1.13.2.1	GEE, C-CDA
Chief Complaint and Reason for Visit Section	C[1..1]**	2.16.840.1.113883.10.20.22.2.13	GEE, C-CDA
Family History	R[0..1]	2.16.840.1.113883.10.20.22.2.15	GEE, C-CDA
General Status	O[0..1]	2.16.840.1.113883.10.20.2.5	C-CDA
History of Past Illness	R[0..1]	2.16.840.1.113883.10.20.22.2.20	GEE, C-CDA
History of Present Illness	R[1..1]	1.3.6.1.4.1.19376.1.5.3.1.3.4	GEE, C-CDA
Immunizations (entries optional)	O[0..1]	2.16.840.1.113883.10.20.22.2.2	C-CDA
Medications (entries optional)	O[0..1]	2.16.840.1.113883.10.20.22.2.1	GEE, C-CDA, IRIS REGISTRY
Physical Exam	O[0..1]	2.16.840.1.113883.10.20.2.10	C-CDA
Plan of Care	C[1..1]*	2.16.840.1.113883.10.20.22.2.10	GEE, C-CDA, IRIS REGISTRY
Problem (entries optional)	O[0..1]	2.16.840.1.113883.10.20.22.2.5	GEE, C-CDA, IRIS REGISTRY
Procedure (entries optional)	O[0..1]	2.16.840.1.113883.10.20.22.2.7	C-CDA, IRIS REGISTRY
Reason for Referral	C[1..1]***	1.3.6.1.4.1.19376.1.5.3.1.3.1	C-CDA
Reason for Visit	C[1..1]***	2.16.840.1.113883.10.20.22.2.12	C-CDA
Results (entries optional)	O[0..1]	2.16.840.1.113883.10.20.22.2.3	C-CDA
Review of Systems	R[0..1]	1.3.6.1.4.1.19376.1.5.3.1.3.18	GEE, C-CDA
Social History	R[0..1]	2.16.840.1.113883.10.20.22.2.17	GEE, C-CDA, IRIS REGISTRY
Vital Signs (entries optional)	O[0..1]	2.16.840.1.113883.10.20.22.2.4	C-CDA, IRIS REGISTRY
Encounters (entries optional)	O[0..1]	2.16.840.1.113883.10.20.22.2.22	IRIS REGISTRY
Functional Status	R[0..1]	2.16.840.1.113883.10.20.22.2.14	GEE
Healthcare Providers and Pharmacies	R[0..1]	1.3.6.1.4.1.19376.1.5.3.1.2.3	GEE, IRIS REGISTRY
Instructions	O[0..1]	2.16.840.1.113883.10.20.22.2.45	IRIS REGISTRY
List of Surgeries	R[0..1]	2.16.840.1.113883.10.20.22.2.26	GEE
Coded List of Surgeries	O[0..1]	1.3.6.1.4.1.19376.1.5.3.1.3.12	GEE
Medications (entries required)	R[0..1]	2.16.840.1.113883.10.20.22.2.1.1	GEE, IRIS REGISTRY
Ocular History	R[0..1]	1.3.6.1.4.1.19376.1.12.1.2.3	GEE, IRIS REGISTRY
Ocular Physical Exam	M[1..1]	1.3.6.1.4.1.19376.1.12.1.2.5	GEE, IRIS REGISTRY
Ophthalmic Medications	R[0..1]	1.3.6.1.4.1.19376.1.12.1.2.4	GEE, IRIS REGISTRY
Problem (entries required)	R[0..1]	2.16.840.1.113883.10.20.22.2.5.1	GEE, IRIS REGISTRY

Eye Care Summary Record (based on C-CDA CCD)

Template Name	OPT	Template Id	Additional Requirements or Comments
CDA Header Modules	M [1..1]	See Section 6.3.1.3.4	
Advanced Directive (entries optional)	O[0..1]	2.16.840.1.113883.10.20.22.2.21	
Allergies (entries required)	R[1..1]	2.16.840.1.113883.10.20.22.2.6.1	
Encounters (entries optional)	O[0..1]	2.16.840.1.113883.10.20.22.2.22	
Encounters (entries required)	R[1..1]	2.16.840.1.113883.10.20.22.2.22.1	This section is not specified in the C-CDA CCD but required for EC-PatSum.
Family History	R[0..1]	2.16.840.1.113883.10.20.22.2.15	This section is optional in the C-CDA CCD but required for EC-PatSum.
Functional Status	R[0..1]	2.16.840.1.113883.10.20.22.2.14	This section is optional in the C-CDA CCD but required for EC-PatSum.
Immunizations (entries optional)	O[0..1]	2.16.840.1.113883.10.20.22.2.2	
Medical Equipment	O[0..1]	2.16.840.1.113883.10.20.22.2.23	
Medications (entries required)	R[1..1]	2.16.840.1.113883.10.20.22.2.1.1	
Payers	O[0..1]	2.16.840.1.113883.10.20.22.2.18	
Plan of Care	O[0..1]	2.16.840.1.113883.10.20.22.2.10	
Problem (entries required)	R[1..1]	2.16.840.1.113883.10.20.22.2.5.1	
Procedure (entries required)	R[0..1]	2.16.840.1.113883.10.20.22.2.7.1	
Results (entries required)	R[0..1]	2.16.840.1.113883.10.20.22.2.3.1	
Social History	R[0..1]	2.16.840.1.113883.10.20.22.2.17	This section is optional in the C-CDA CCD but required for EC-PatSum.
Vital Signs (entries optional)	O[0..1]	2.16.840.1.113883.10.20.22.2.4	
Surgery Description	R[0..1]	2.16.840.1.113883.10.20.22.2.26	This section is expected to be an accumulated list of surgeries.
Coded List of Surgeries (accumulated list of surgeries)	O[0..1]	1.3.6.1.4.1.19376.1.5.3.1.3.12	This section is expected to be an accumulated list of surgeries.
Ocular History	R[0..1]	1.3.6.1.4.1.19376.1.12.1.2.3	Note: Able to include a narrative description and coded Ocular Surgeries/Procedures, with dates, etc.
Ocular Encounters Summary	R[1..*]	1.3.6.1.4.1.19376.1.12.1.2.yyy	

GEE - Routine Eye Examination Sections

Template ID	1.3.6.1.4.1.19376.1.12.1.2.6			
Parent Template	Eyes 1.3.6.1.4.1.19376.1.5.3.1.1.9.19			
General Description	The routine eye exam section shall contain a description of any type of eye exam.			
Section Code	10197-2, LOINC, "Physical findings of eye"			
Opt	Data Element or Section Name	Template ID	Specification Document	Constraint
Subsections				
R[0..1]	Visual Acuity	1.3.6.1.4.1.19376.1.12.1.2.7	EYECARE TF-2: 6.3.2.8	
R[0..1]	Vision Testing	1.3.6.1.4.1.19376.1.12.1.2.8	EYECARE TF-2: 6.3.2.7	
R[0..1]	Refractive Measurements	1.3.6.1.4.1.19376.1.12.1.2.9	EYECARE TF-2: 6.3.2.9	
R[0..1]	Lensometry Measurements	1.3.6.1.4.1.19376.1.12.1.2.10	EYECARE TF-2: 6.3.2.10	
R[0..1]	Intraocular pressure	1.3.6.1.4.1.19376.1.12.1.2.11	EYECARE TF-2: 6.3.2.11	
R[0..1]	Confrontation Visual Field	1.3.6.1.4.1.19376.1.12.1.2.12	EYECARE TF-2: 6.3.2.12	
R[0..1]	Eye External	1.3.6.1.4.1.19376.1.12.1.2.13	EYECARE TF-2: 6.3.2.13	
R[0..1]	Lacrimal	1.3.6.1.4.1.19376.1.12.1.2.14	EYECARE TF-2: 6.3.2.18	
R[0..1]	Pupils	1.3.6.1.4.1.19376.1.12.1.2.15	EYECARE TF-2: 6.3.2.14	
R[0..1]	Ocular alignment and motility	1.3.6.1.4.1.19376.1.12.1.2.16	EYECARE TF-2: 6.3.2.15	
R[0..1]	Anterior segment	1.3.6.1.4.1.19376.1.12.1.2.17	EYECARE TF-2: 6.3.2.16	
R[0..1]	Posterior segment	1.3.6.1.4.1.19376.1.12.1.2.18	EYECARE TF-2: 6.3.2.17	
R[0..1]	Ancillary Testing	1.3.6.1.4.1.19376.1.12.1.2.19	EYECARE TF-2: 6.3.2.19	

2020 Vision- Benefit of Membership

- Right to serve as voting participants on IHE committees
- Recognition of membership (including logo) on www.ihe.net Website
- Access to member directory with contact information for networking and communication
- Show peers and customers you support an organization that enables vital progress in the health IT domain

Benefits of the 2020 Vision Model

- Supports IHE's ongoing ability to provide free and open source use of technical documents and tools
- Enrich support for IHE members, committees, and international deployment organizations
- Broaden testing services to improve product and deployment successes
- Enhance governance and capabilities by becoming more financially self-sustaining
- Broaden stakeholder engagement and increase awareness and adoption of IHE profiles with improved communication and education

2020 Vision Business Model

- Annual Membership Fee Tiered by size and type of organization

For-profit entities (i.e., vendors)

- Large (more than 250 employees): \$1,500
- Medium (4 to 250 employees): \$500
- Small Organization (less than 4 employees): \$250

Government and not for profit: \$500/year

- Small humanitarian non-profit organizations: \$250
- Standards Development Orgs: \$0

2020 Vision Business Model (contd)

- Benefactor Membership: \$25,000

HIMSS and RSNA will continue to act as benefactors

- National Deployment Committee Membership: \$1,500
- Regional Deployment Committee Membership (IHE Europe): \$25,000

Includes membership for all IHE Europe Member Deployment Committees

How to Participate in Eye Care?

- Apply for IHE International Organizational Membership
 - Visit: <http://www.ihe.net/Join/>
 - Approved monthly by IHE International Board
 - [Review IHE's 500+ Organizational Members](#)
- Participate in IHE Domains & Committees
 - *IHE Organizational Members only have voting rights*
 - Each Domain has one planning and one technical committee
- Non-members participate in comment periods and implement IHE Technical Frameworks

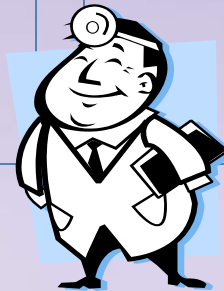
Eye Care Committee Responsibilities

Planning Committee

- Plan for Connectathon and Showcase
- Education
- Identifies committee priorities and problems
- Major projects:
 - Recruitment for 2015 Connectathon & showcase
 - Marketing and Showcase Scenarios

Contact Information

- Secretary: Flora Lum (flum@aao.org)
- Co-Chair: Linda Wedemeyer
- eyecare@ihe.net
- <http://www.ihe.net/Eyecare/committees/index.cfm>
- http://www.ihe.net/Eye_Care/



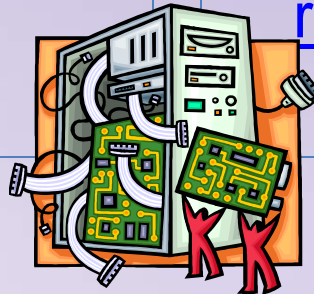
Eye Care Committee Responsibilities

Technical Committee

- Recruitment
- Development of IHE Profiles
- Maintenance of IHE Technical Frameworks
- Major Projects:
 - CDA projects in different subspecialty areas

Contact Information

- Secretary: Flora Lum, MD
flum@aao.org
- Co-Chair: Mark Horton, OD, MD
- eyecare@ihe.net
- <http://www.ihe.net/Eyecare/committees/index.cfm>
- http://www.ihe.net/Eye_Care/



How to Participate in Eye Care?

Participate in IHE's Profile Cycle

- Committee work follows the IHE Profile Cycle
 - Annual eighteen (18) month cycle
 - Each IHE domain has its' own independent schedule
 - Opportunities for IHE members and non-members to participate in cycle
- Detailed overview of IHE Cycle

IHE Profiles Drafted & Revised



Published For Public Comment

IHE Technical Framework Developed

Trial Implementation

6-13 mos.



Test at IHE Connectathons



Publish in IHE's Product Registry

14-18 mos.

Demonstrate at a



Profile Selection by Committees

IHE Call for Proposals Opens
1-5 mos.

IHE Improves, Safety, Quality and Efficiency in Clinical Settings.

Install Interoperable products in Clinical Settings worldwide



www.ihe.net

IHE Eye Care Profile Cycle

IHE Profile Cycle Stages 2015-2016	Membership Status	Open Date	Close Date
<i>Call for Proposal</i>	Open	October 2015	December 2015
<i>Profile Selection</i>	Closed	November 2015	December 2015
<i>IHE Profiles drafted in IHE Committees</i>	Open	January 2016	March 2016
<i>Public Comment 1</i>	Open	March 2016	Apr 2016
<i>Trial Implementation Published</i>	Closed	June 2016	June 2016
<i>IHE Connectathon Registration</i>	Open	August 1 2016	September 30 2016
<i>IHE Connectathon Dates</i>	Open	TBD	TBD

Dates are subject to change please check
http://wiki.ihe.net/index.php?title=Eye_Care

The IHE logo consists of the letters 'IHE' in a bold, dark blue, sans-serif font. A vertical line is positioned to the right of the letters, separating them from the tagline.

IHE

Integrating
the Healthcare
Enterprise

*Thank you for your
attention*

Questions?

Learn More about IHE Connectathons

- IHE Connectathons: www.iheusa.org/connectathon.aspx
- IHE Eye Care Connectathon Dates: October 12-15, 2015
- AAO Showcase Dates: November 14-18, 2015